



# REPLACEMENT PARTS CATALOG



---

## **Power 50 Vineyard Sprayer** (with Piston/Membrane pump)

---



**EQUIPMENT COMPANY**  
PO Box 655 - Vineburg, CA 95487

# **VMA Parts Catalog**

## **Power 50-P Sprayer**

**(with Piston/Membrane pump)**

---

*MG Equipment Company specializes in unique tractor implements designed specifically for vineyards and orchards.*

*This catalog is designed to detail all the parts and components for VMA Vineyard Sprayers. It is divided into sections for each part of the implement and includes exploded diagrams and a detailed parts list. Please note that some parts may be fitted to more than one VMA sprayer.*

*To ensure a long life of reliable and trouble-free service for your implements, use only genuine VMA replacement parts.*

*It is our goal to meet or exceed the expectations of our customers and to offer unsurpassed service and parts support. We partner with each of our manufacturers to provide the best possible after-sales-support.*

*We thank you for your valued business. We remain at your complete disposal for any information you require regarding any of our products.*

---

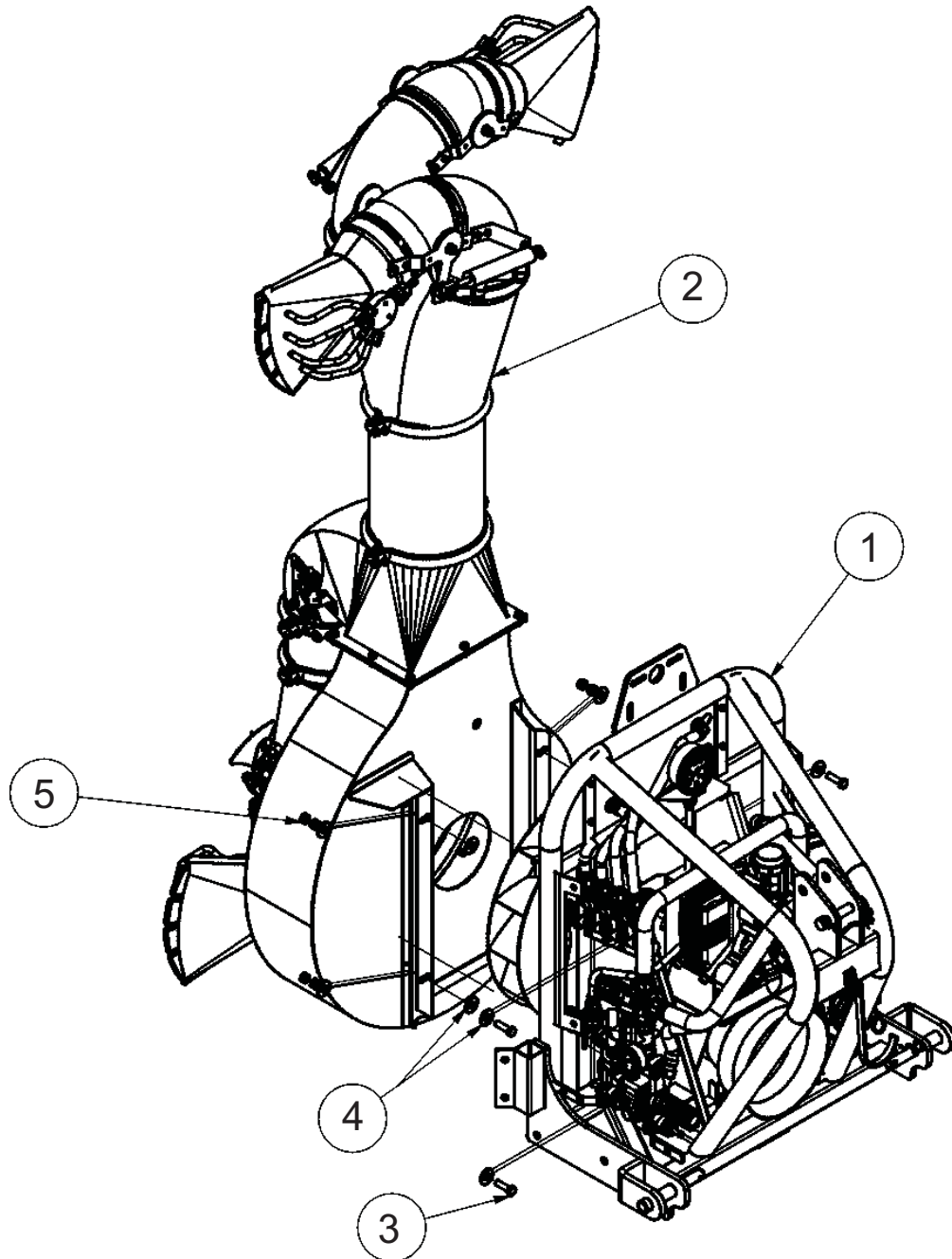
For Replacement Parts Sales and Information contact:

## **MG Equipment Co.**

PO Box 655 Vineburg, CA 95487  
mgequipment@gmail.com

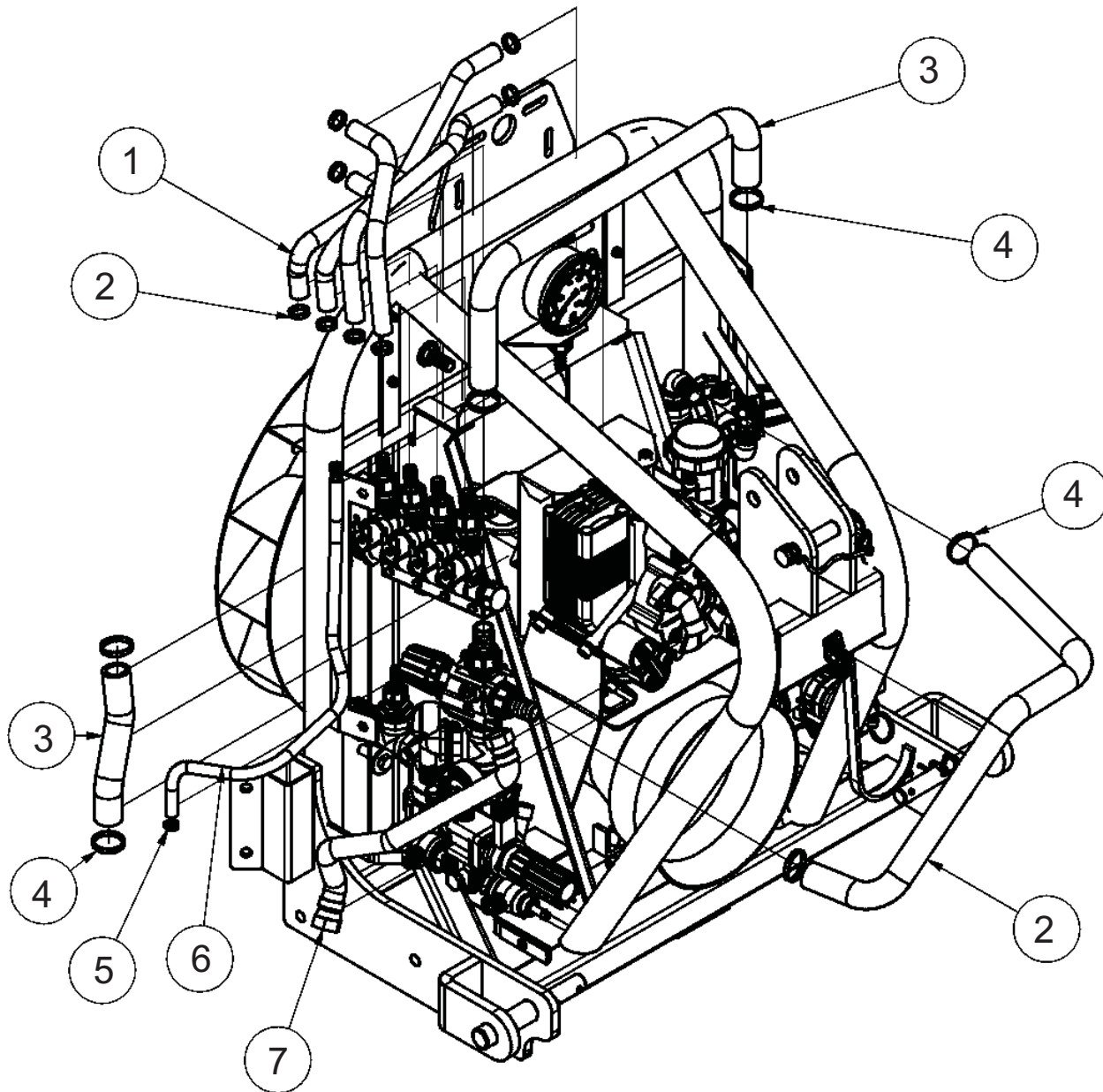
**Tel: (707) 996-2605**  
**Fax: (707) 996-3405**  
**Mobile: (510) 813-2046**

## MAIN BODY / FRAME



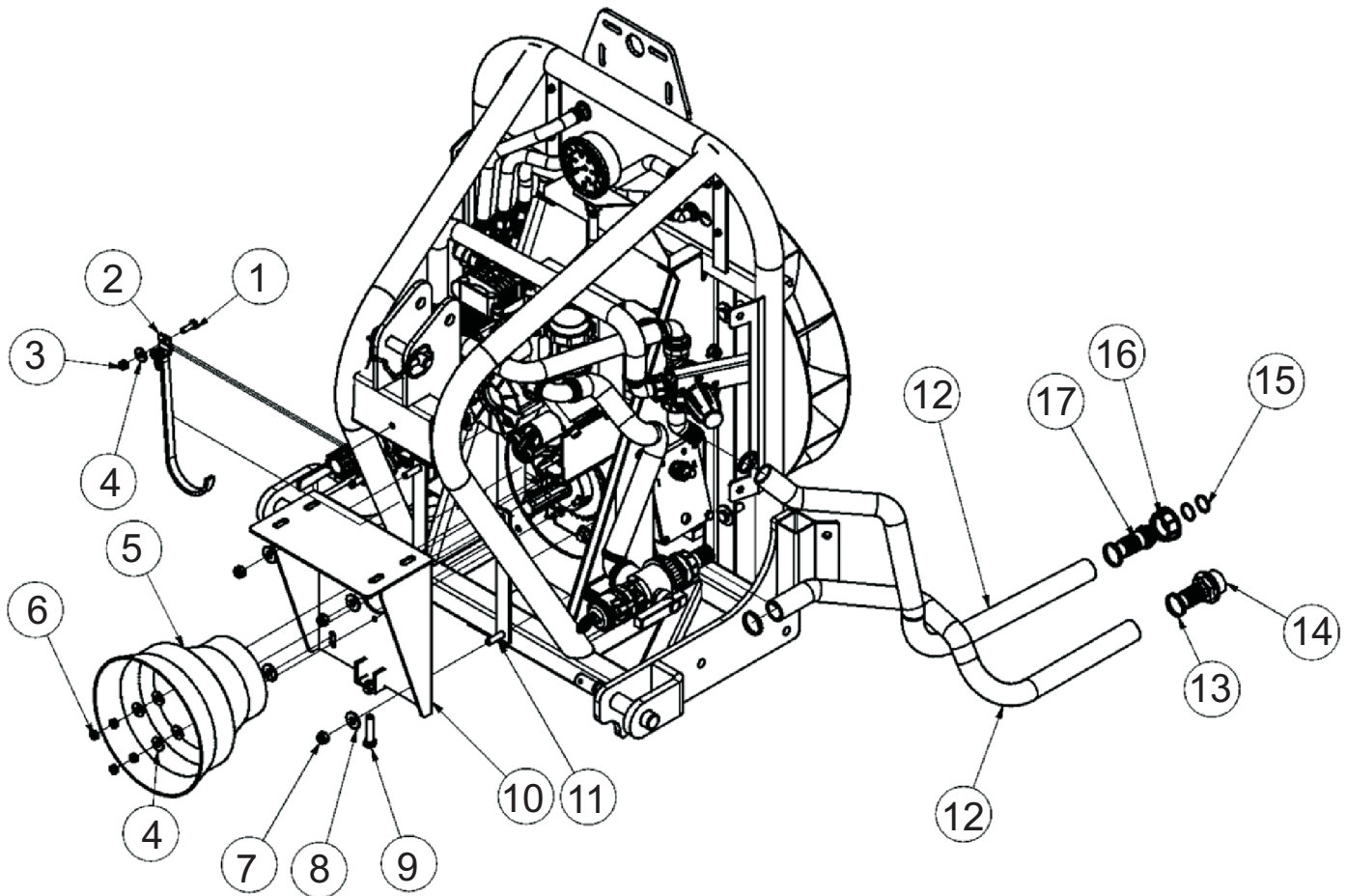
Item#	Part#	Description	Qty
1	Main Body / Frame	----> see complete parts list on Pages 2-4	1
2	Spray tower	----> see complete parts list on Page xx	1
3	VM-TE0012.040.TF	Bolt - TE M12 x 40	4
4	VM-RP0012.036.00	Washer - 12 x 36 mm SP.2.5	12
5	VM-D00012.000.00	Nut - M12	8

## HOSES / FITTINGS



Item#	Part#	Description	Qty
1	VM-100071.000.00	Black tubing - Nr. 20 - 16 x 23 mm	1
2	VM-F0016.025.00	Hose clamp W2 - 9 x 16-25 mm	8
3	VM-100072.000.00	Black tubing - Nr. 20 - 25 x 34 mm	1
4	VM-F0025.040.00	Hose clamp W2 - 12 x 25-40 mm	12
5	VM-F0010.016.00	Hose clamp W2 - 9 x 10-16 mm	2
6	VM-100070.000.00	Black tubing - Nr. 20 - 10 x 15 mm	1
7	VM-100326.000.04	Hose - 3/4" R1 - L = 360 mm x 3/4" F	1

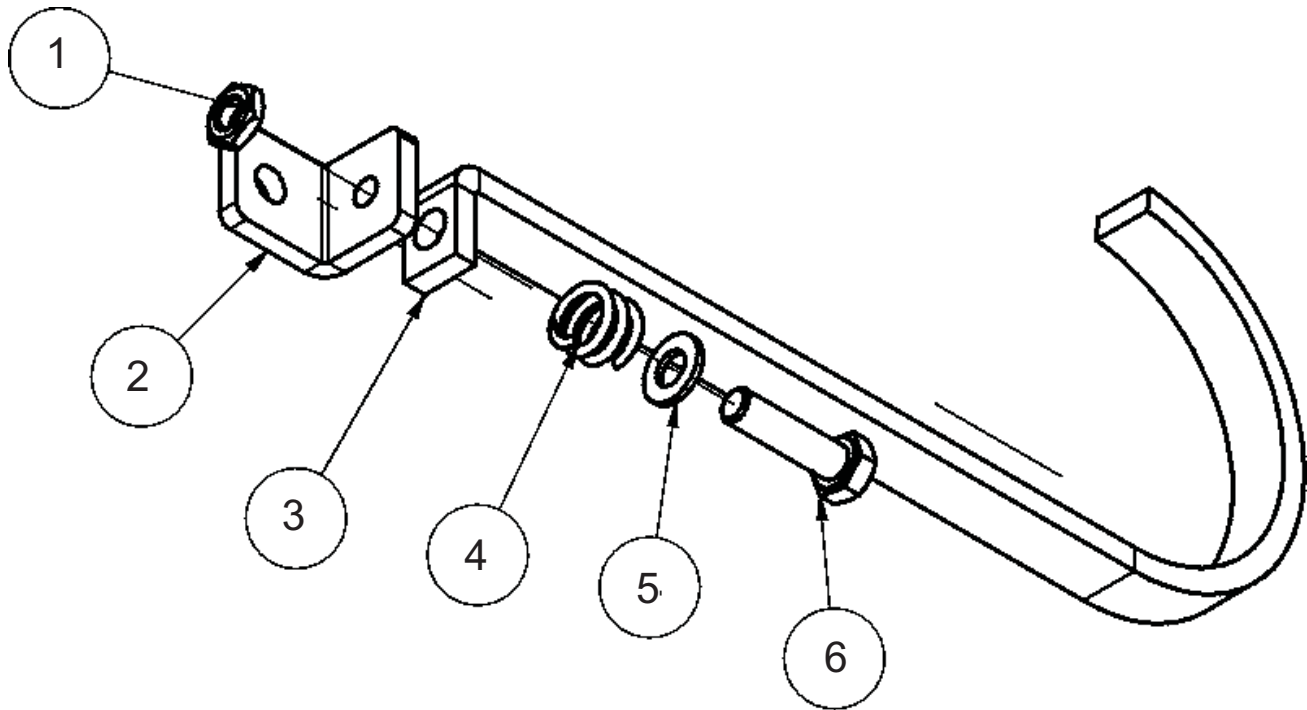
## PTO SHIELD / HOSES / FITTINGS



Item#	Part#	Description	Qty
1	VM-TE0008.025.TF	Bolt - TE M8x25 ZB	3
2	VM-000919.000.00	PTO support hook (complete assembly)	1
3	VM-DA0008.000.00	Nut (self-locking) - M8	8
4	VM-RP0008.024.00	Washer - 8 x 24 (stainless)	6
5	VM-100079.000.00	PTO shield (Black plastic)	1
6	VM-D00008.000.0A	Nut - M8	4
7	VM-DA0010.000.00	Nut (self-locking) - M10	10
8	VM-RP0010.030.00	Washer - 10 x 30 (zinc)	8
9	VM-TE0012.050.TF	Bolt - TE M12 x 50 ZB	5

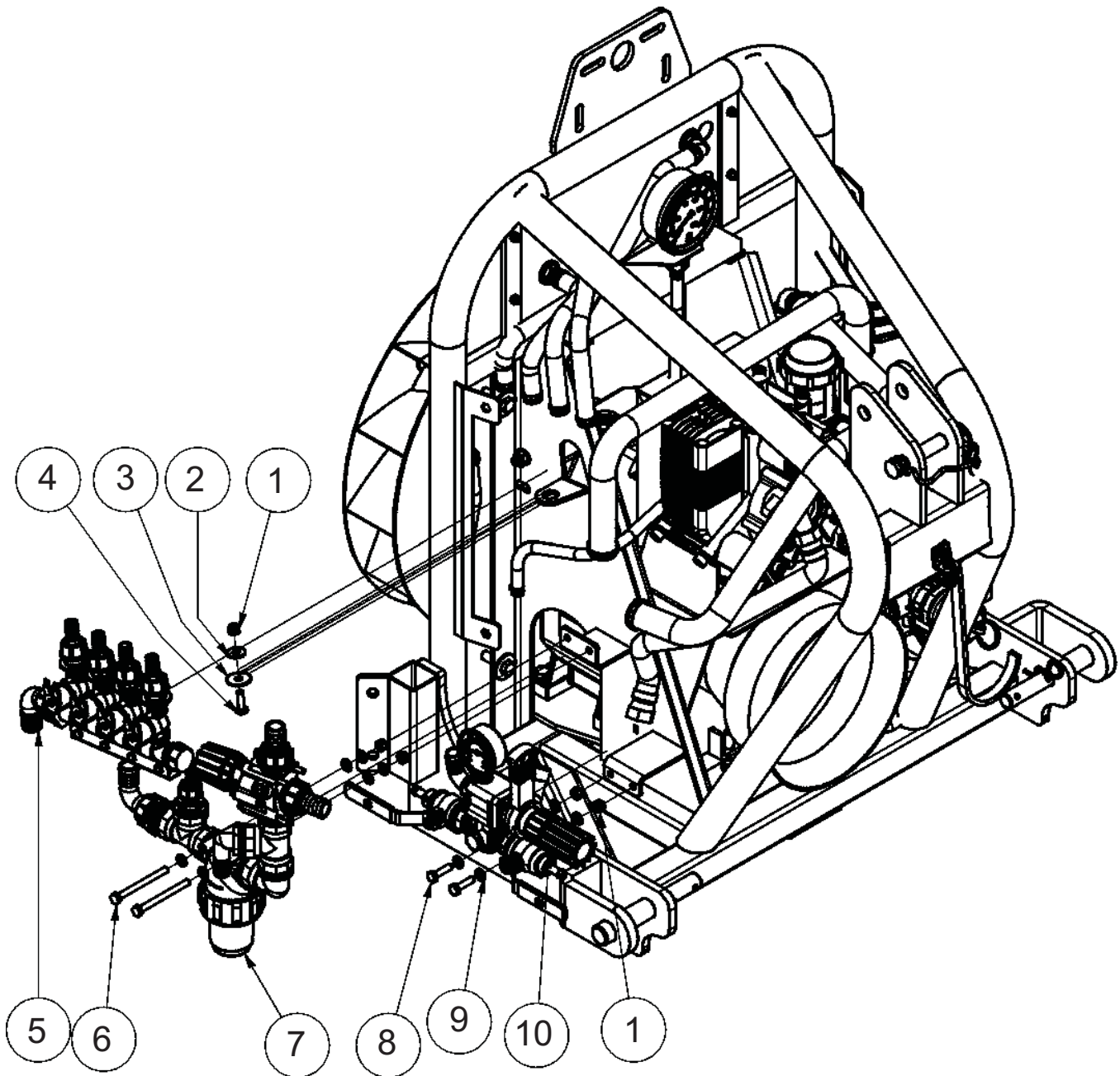
Item#	Part#	Description	Qty
10	VM-000606.000.00	Pump support assembly	1
11	VM-000777.000.00	Pump support assembly straps	2
12	VM-100073.000.00	Tubing - D 30 mm (black)	2
13	VM-F0025.040.00	Hose clamp W2 - 12 x 25-40 mm	12
14	VM-100085.000.00	Barb fitting D.30 mm x 1-1/4"MPT	1
15	VM-OR0003.100.00	O-Ring 3100 - 25.07 x 2.62	3
16	VM-100038.000.00	Threaded Collar - 1-1/4"	2
17	VM-100028.000.00	Barb fitting D.30 mm (straight)	1

PTO SUPPORT HOOK



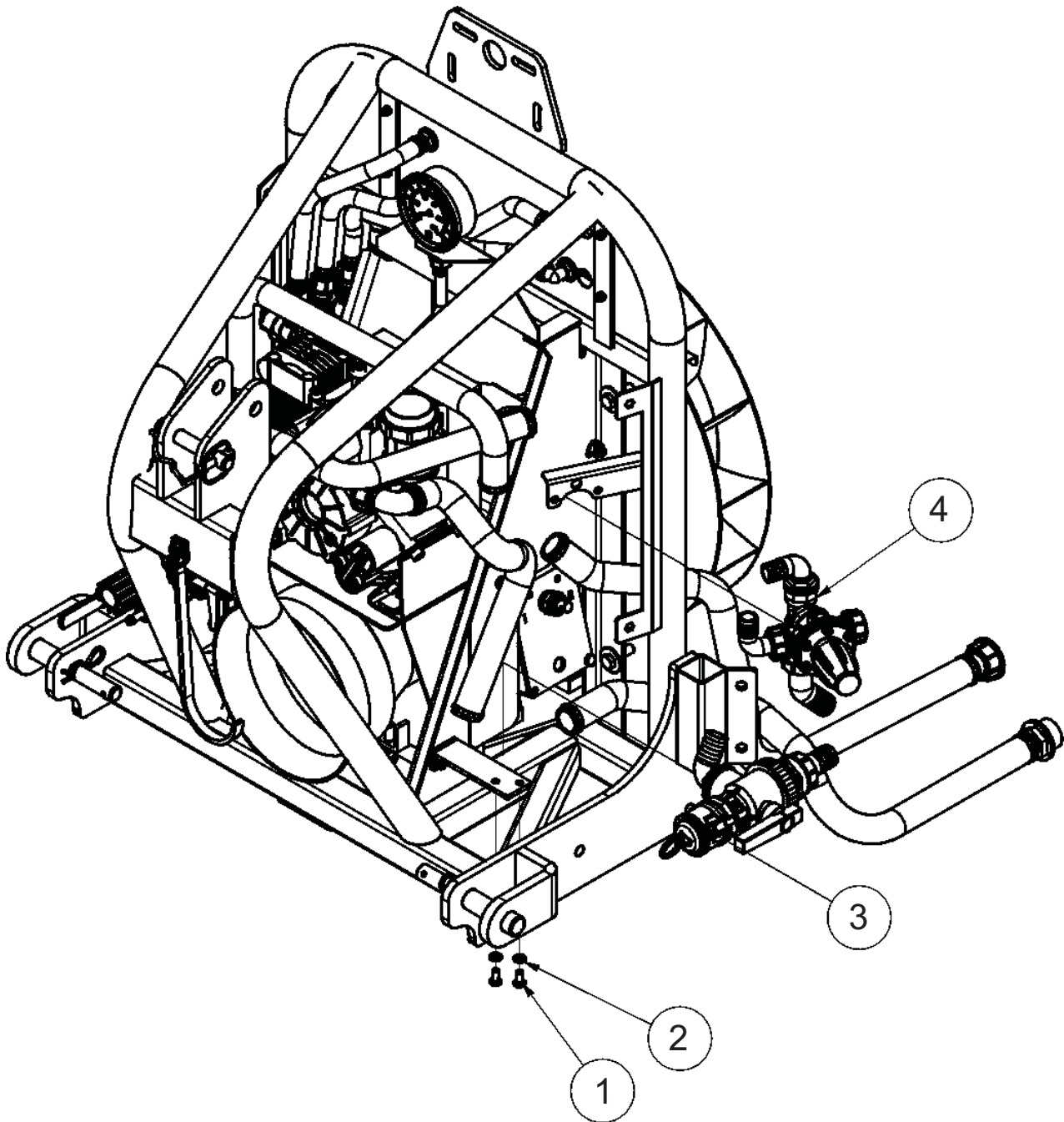
Item#	Part#	Description	Qty
1	VM-D00008.000.0B	Nut - M8 (basso)	1
2	VM-000776.000.00	Angle bracket for PTO support hook	1
3	VM-000100.100.00-A	PTO support hook	1
4	VM-100148.000.00	Spring - D 2.5mm - Ext 16 mm - L=15 mm	1
5	VM-RP0008.000.00	Washer - 8 ZB	1
6	VM-TE0008.030.TF	Bolt - TE M8 x 30 ZB	1

## ELECTRO-VALVES / FILTER / FITTINGS



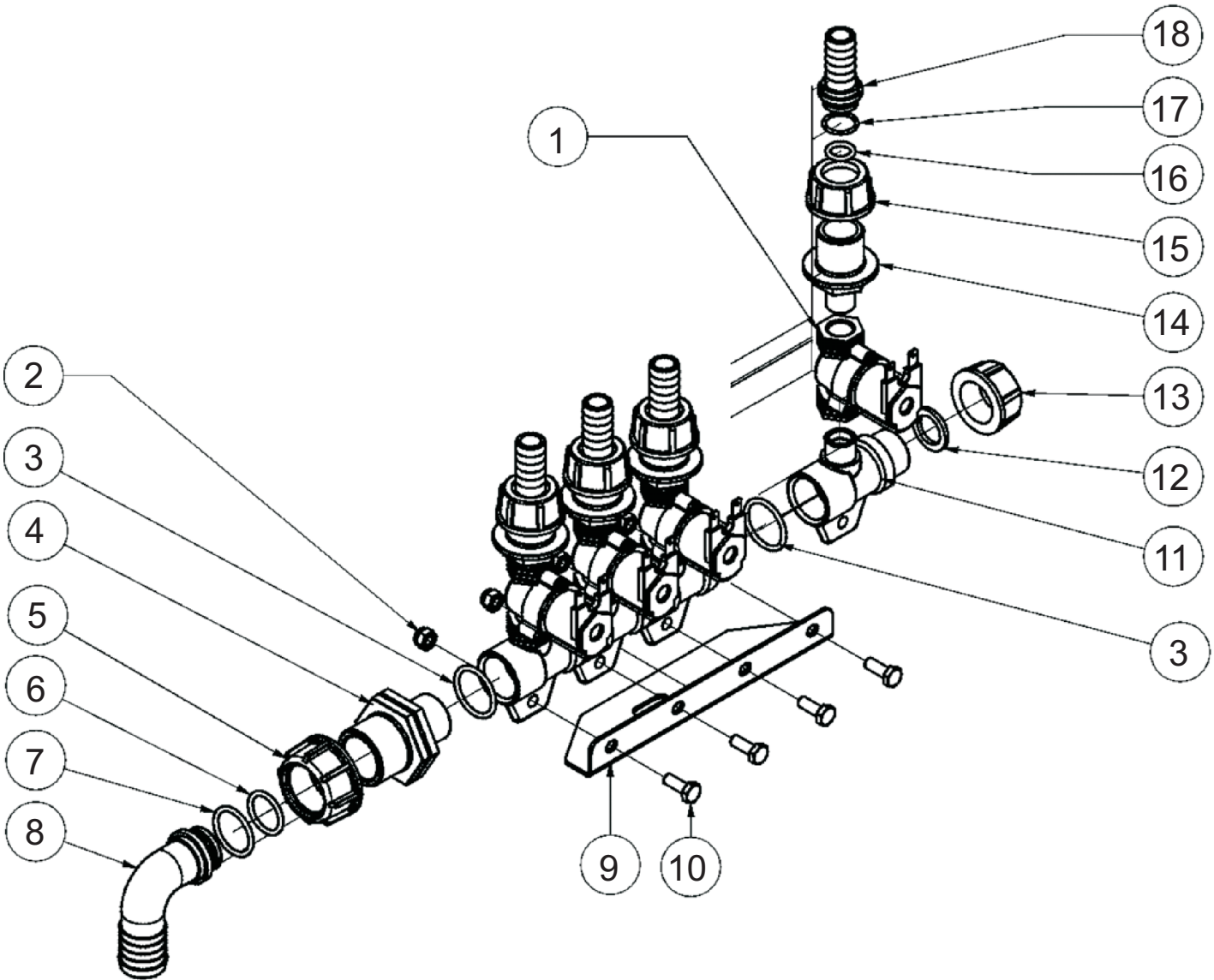
Item#	Part#	Description	Qty
1	VM-DA0008.000.00	Nut (self-locking) - M8	8
2	VM-RP0008.024.00	Washer - 8 x 24 (stainless)	6
3	VM-RP0008.032.00	Washer - 8 x 32 ZB	1
4	VM-TE0008.025.TF	Bolt - TE M8 x 25 (stainless)	1
5	Electro-Valves	---> see complete parts list on Page 7	-
6	VM-TE0008.090.FP	Bolt - TE M8 x 90 ZB	2
7	Liquid Filter	---> see complete parts list on Page 8	-
8	VM-TE0008.030.TF	Bolt - TE M8 x 30 ZB	2
9	VM-RP0008.000.00	Washer - 8 ZB	18
10	VM-100561.000.02	Pressure regulator - 3 way - 40 bar	1

## VALVES / REGULATORS



Item#	Part#	Description	Qty
1	VM-TE0008.016.TF	Bolt - TE M8 x 16 (zinc)	2
2	VM-RP0008.000.00	Washer - 8 ZB	2
3	Intake Valve (3 way)	----> see complete parts list on Page 9	-
4	Pressure Regulator	----> see complete parts list on Pages 8 & 10	-

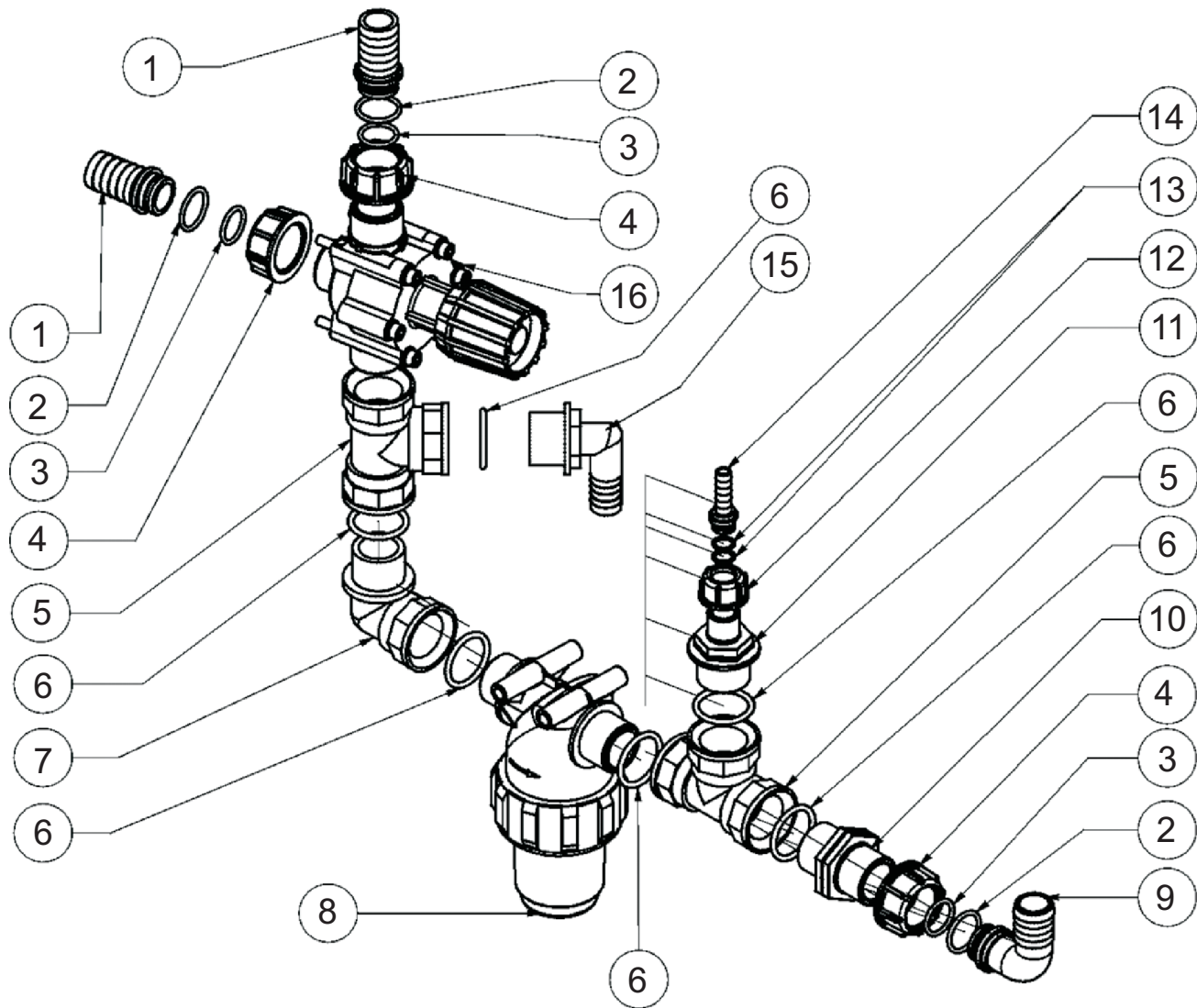
## ELECTRO-VALVES / FITTINGS



Item#	Part#	Description	Qty
1	VM-100196.000.00	Electro-valve - 3/8"F x 3/8"F - 12V	4
2	VM-DAI006.000.00	Nut (self-locking) - M6 Stainless	4
3	VM-OR0003.100.00	O-Ring 3100 - 25.07 x 2.62	4
4	VM-100135.000.00	Reducer - 1"M x 3/4"M	1
5	VM-100037.000.00	Threaded Collar - 1"	1
6	VM-OR0003.081.00	O-Ring 3081 - 24.24 x 2.62	1
7	VM-OR0000.132.00	O-Ring 132 - 23.81 x 2.62	1
8	VM-100159.000.00	Barb fitting D.25 mm - 90 degree	1
9	VM-000857.000.00	Valve support bracket - 4 valves	1

Item#	Part#	Description	Qty
10	VM-TEI006.016.TF	Bolt - TE M6 x 16 (stainless)	4
11	VM-100394.000.00	Tee - support for electrovalve - 3/4"M x 3/8"M x Valve	4
12	VM-100435.000.00	Flat washer - 24.5 x 17 x 2.5 mm (rubber)	1
13	VM-TF0000.003.04	Threaded cap - 3/4" FM	1
14	VM-100194.000.00	Reducer - 3/4"M x 3/8"M	4
15	VM-100058.000.00	Threaded Collar - 3/4"	4
16	VM-OR0003.043.00	O-Ring 3043 - 10.77 x 2.62	4
17	VM-OR0002.062.00	O-Ring 2062 - 15.60 x 1.78	4
18	VM-100343.000.00	Barb fitting D.15 mm (straight)	4

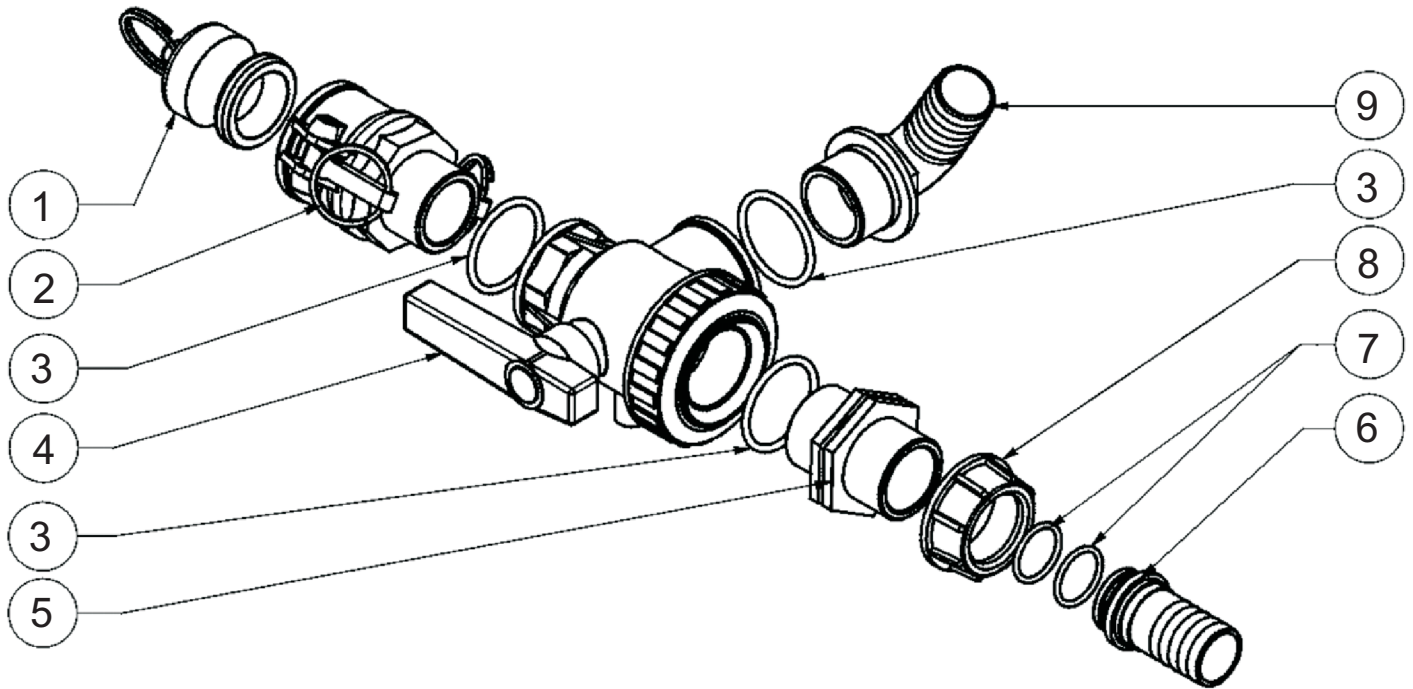
## FILTER / PRESSURE REGULATOR / FITTINGS



Item#	Part#	Description	Qty
1	VM-100158.000.00	Barb fitting D.25 mm (straight)	2
2	VM-OR0000.132.00	O-Ring 132 - 23.81 x 2.62	3
3	VM-OR0003.081.00	O-Ring 3081 - 24.24 x 2.62	3
4	VM-100037.000.00	Threaded Collar - 1"	3
5	VM-100041.000.00	Tee - 1"F x 1"F x 1"F	2
6	VM-OR0004.125.00	O-Ring 4125 - 31.34 x 3.53	6
7	VM-100091.000.00	Street L - 1" M x F	1
8	VM-100009.000.00	Filter assembly - 50 mesh - 1"F x 1"F	1

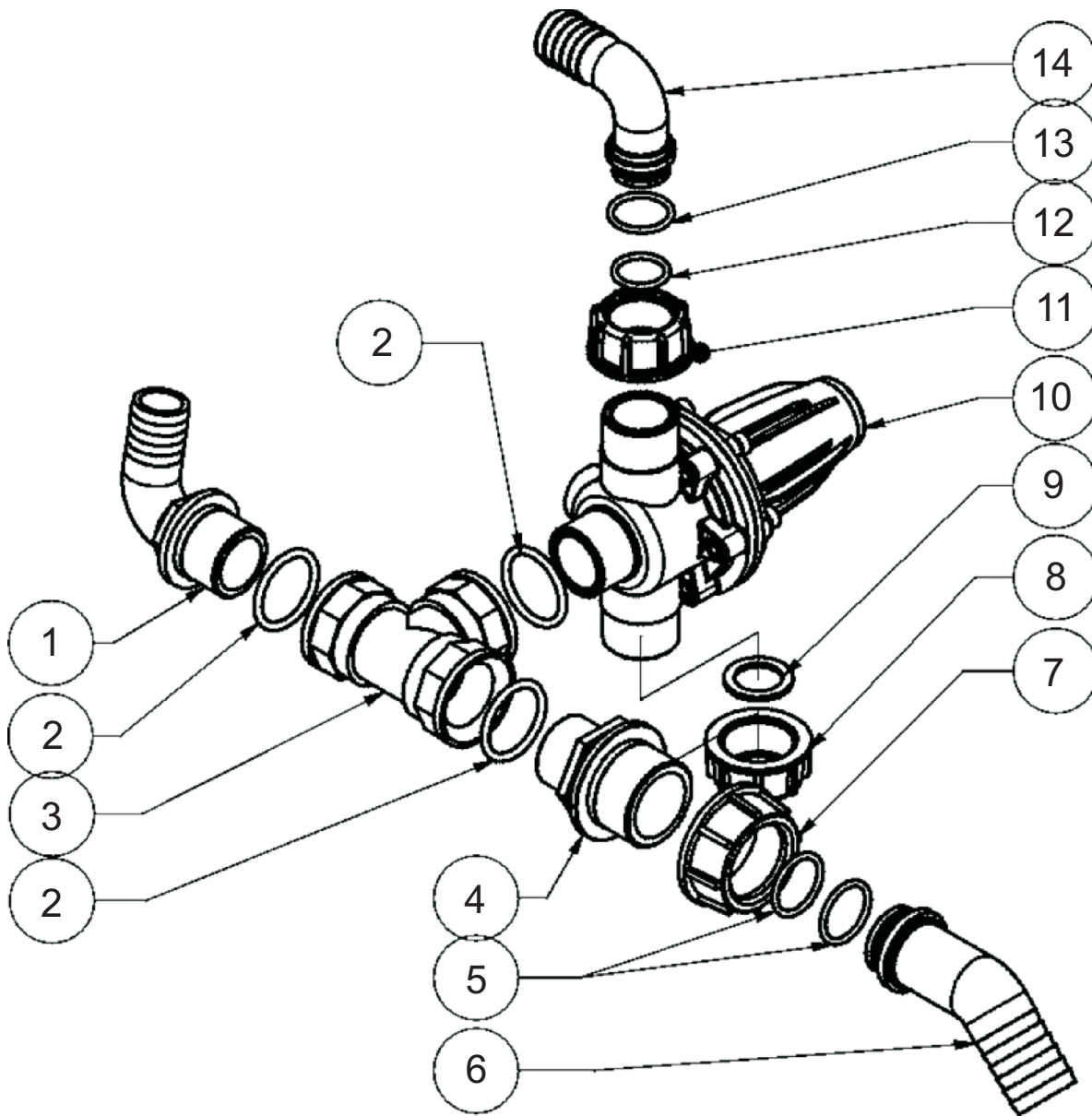
Item#	Part#	Description	Qty
9	VM-100159.000.00	Barb fitting D.25 mm - 90 degree	1
10	VM-100094.000.00	Nipple - 1" MxM	1
11	VM-100121.000.00	Reducer - 1"M x 1/2"M	1
12	VM-100036.000.00	Threaded Collar - 1/2"	1
13	VM-OR0002.043.00	O-Ring 2043 - 10.82 x 1.78	2
14	VM-100598.000.00	Barb fitting D.10mm (straight)	1
15	VM-100427.000.00	Barb fitting D.20 mm x 1" MPT - 90 degree	1
16	VM-100045.003.00	Pressure regulator - 1"MPT x 1"MPT x 1"MPT (0-10 Bar)	1

## 3-WAY VALVE / FITTINGS



Item#	Part#	Description	Qty
1	VM-100053.000.00	Plug - Quick attachment - 1-1/4" M	1
2	VM-100052.000.00	Quick attachment - FM adapter x 1-1/4" MPT	1
3	VM-OR0004.162.00	O-Ring - 40.86 x 3.53	3
4	VM-100100.000.00	Ball Valve - 3 way - 1-1/4" FMxFMxFM	1
5	VM-100000.000.00	Nipple - 1-1/4" MxM	1
6	VM-100028.000.00	Barb fitting D.30 mm (straight)	1
7	VM-OR0003.100.00	O-Ring 3100 - 25.07 x 2.62	2
8	VM-100038.000.00	Threaded Collar - 1-1/4"	1
9	VM-100027.000.00	Barb fitting D.30 mm x 1-1/4" MPT - 90 degree	1

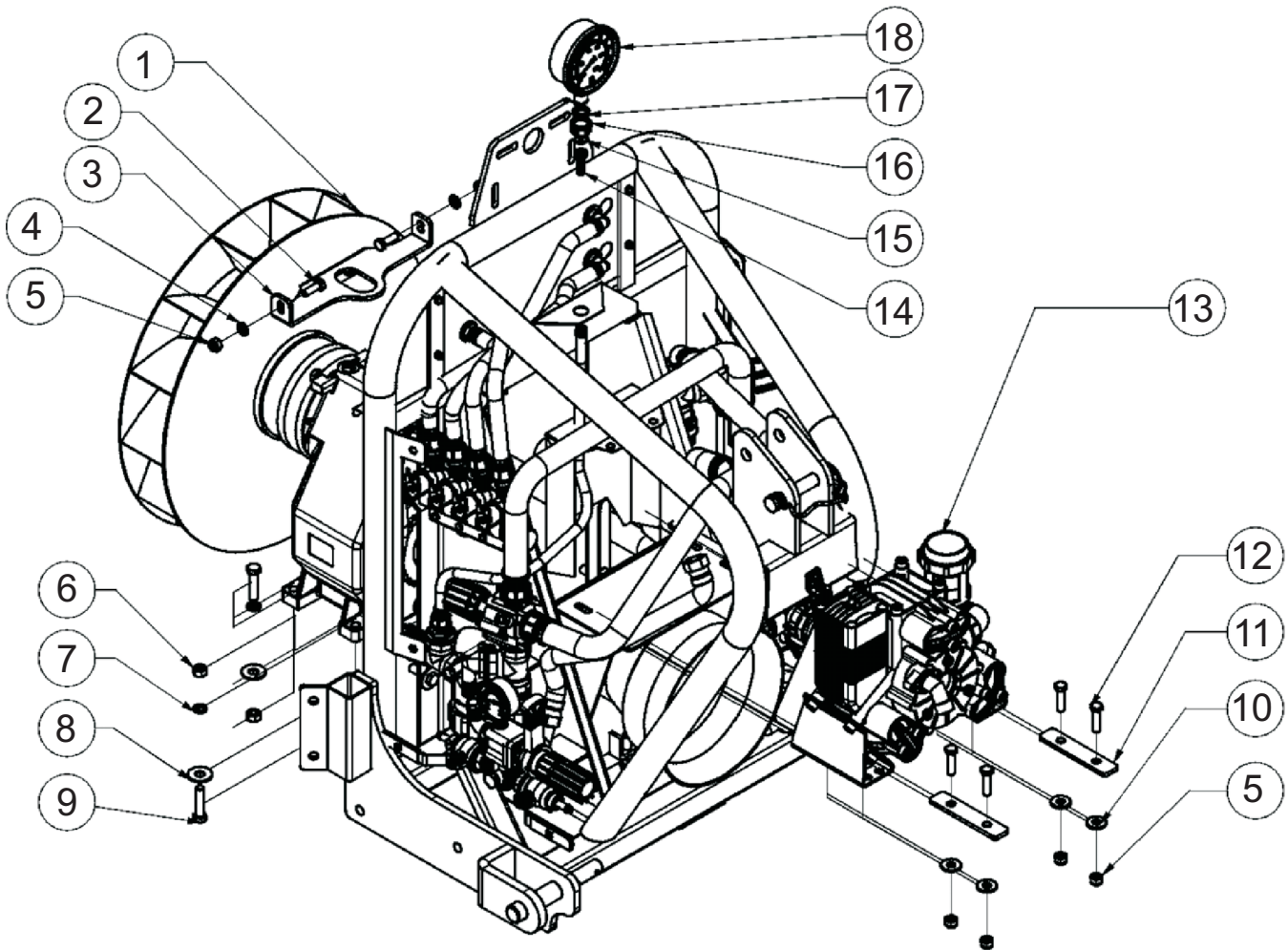
## PRESSURE REGULATOR / VALVE / FITTINGS



Item#	Part#	Description	Qty
1	VM-100422.000.00	Barb fitting D.25 mm x 1"MPT - 90 degree	1
2	VM-OR0004.125.00	O-Ring 4125 - 31.34 x 3.53	3
3	VM-100041.000.00	Tee - 1"F x 1"F x 1"F	1
4	VM-100095.000.00	Reducer - 1"M x 1-1/4"M	1
5	VM-OR0003.100.00	O-Ring 3100 - 25.07 x 2.62	2
6	VM-100031.000.00	Barb fitting D.30 mm - 45 degree	1
7	VM-100038.000.00	Threaded Collar - 1-1/4"	1

Item#	Part#	Description	Qty
8	VM-TF0001.000.00	Threaded cap - 1" FM	1
9	VM-000341.000.00	Flat washer - 21 x 30 x 2 mm (rubber)	1
10	VM-100045.000.00	Pressure regulator - 1"MPT x 1"MPT x 1"MPT	1
11	VM-100037.000.00	Threaded Collar - 1"	1
12	VM-OR0003.081.00	O-Ring 3081 - 24.24 x 2.62	1
13	VM-OR0000.132.00	O-Ring 132 - 23.81 x 2.62	1
14	VM-100159.000.00	Barb fitting D.25 mm - 90 degree	1

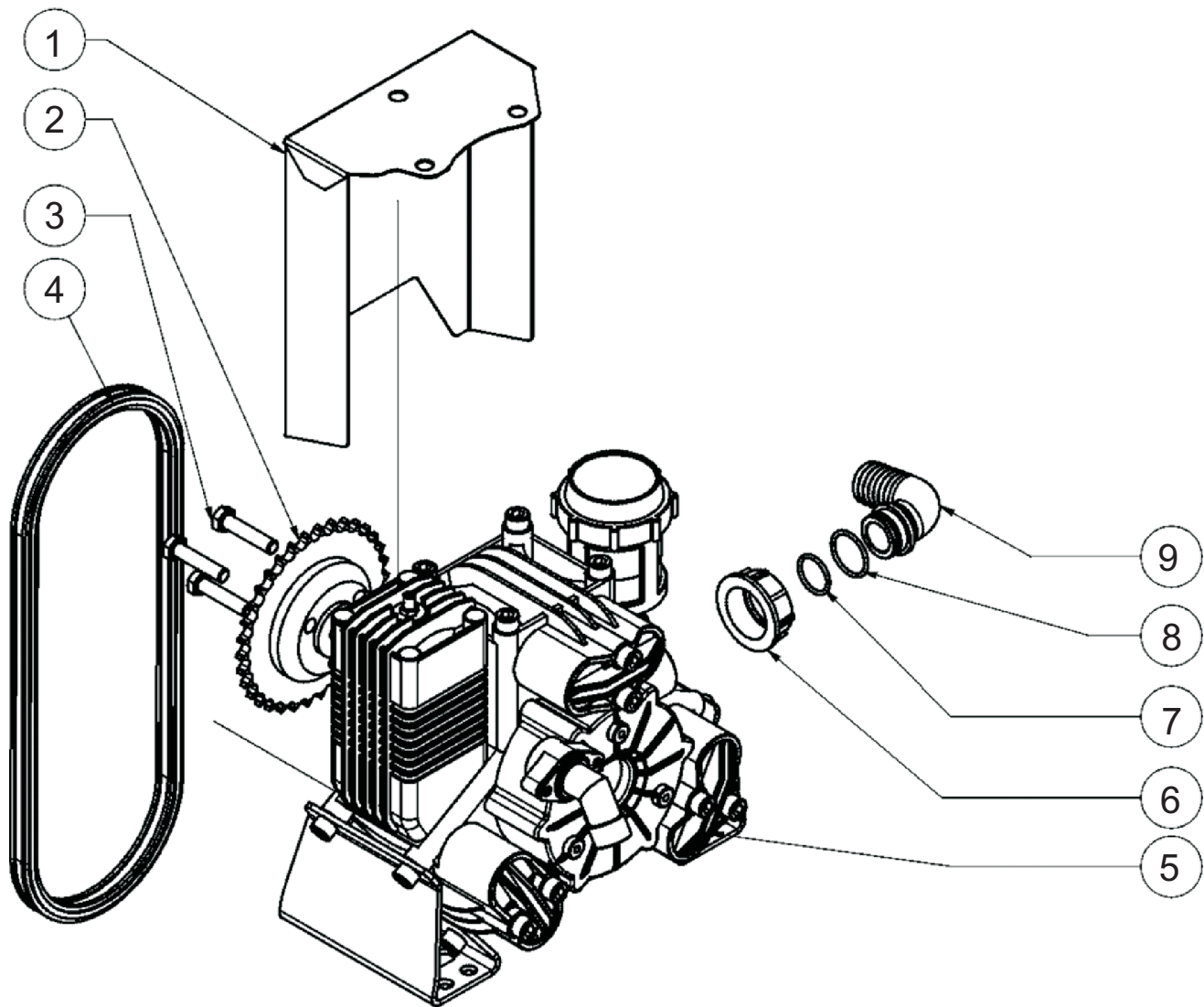
## PISTON PUMP / FAN / HARDWARE



Item#	Part#	Description	Qty
1	VM-100558.000.00	Complete gearbox assembly	1
2	VM-TEI010.030.TF	Bolt - TE M10 x 30 (stainless)	2
3	VM-SL0183	Support strap for gearbox	1
4	VM-RP010.000.00	Washer - 10 (stainless)	2
5	VM-DA0010.000.00	Nut (self-locking) - M10	10
6	VM-D00012.000.00	Nut - M12	4
7	VM-RP0012.000.00	Washer - 12	4
8	VM-RP0012.036.00	Washer - 12 x 36 mm SP.2.5	8
9	VM-TE0012.050.TF	Bolt - TE M12 x 50 ZB	5

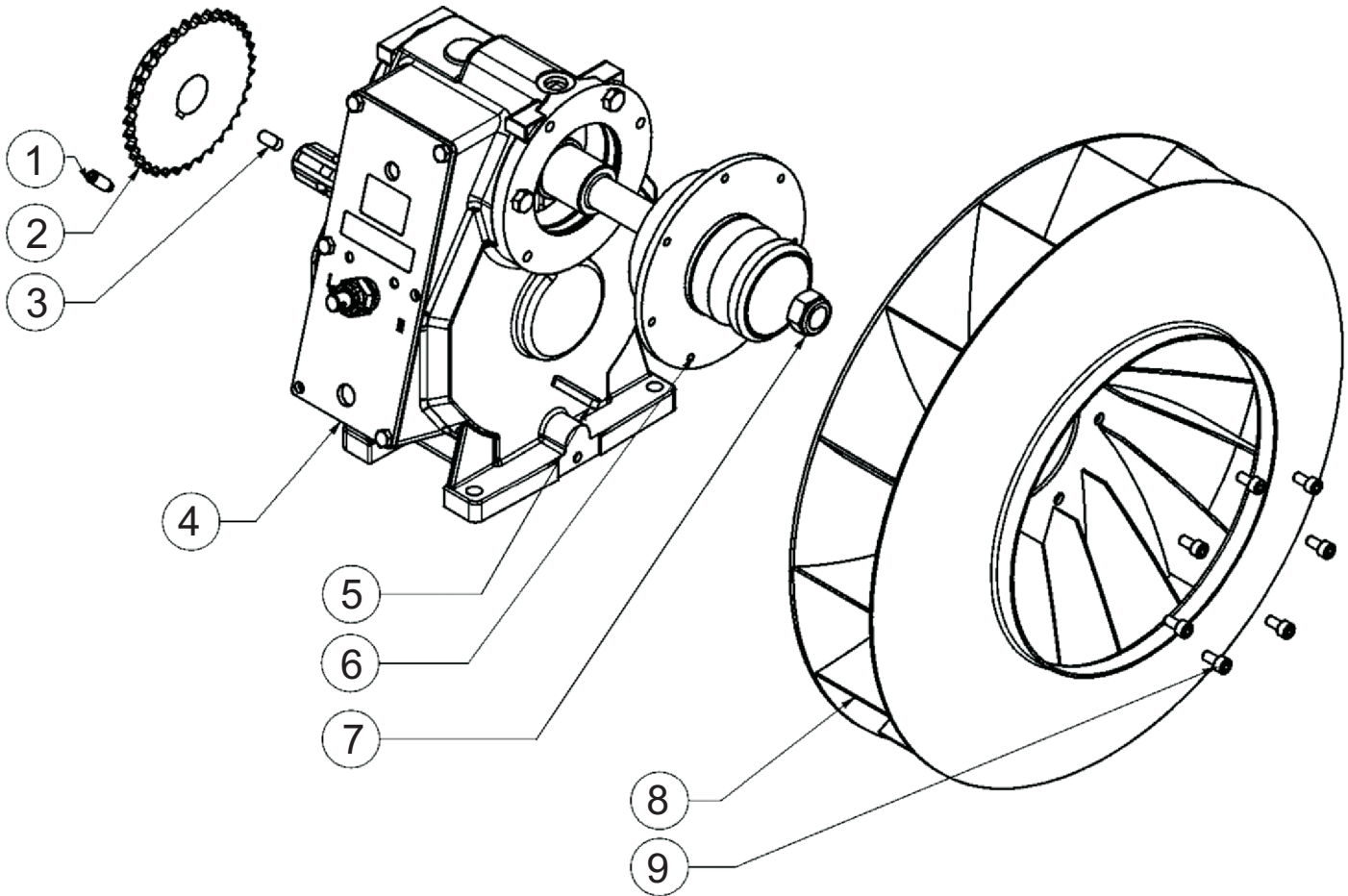
Item#	Part#	Description	Qty
10	VM-RP0010.030.00	Washer - 10 x 30 (zinc)	8
11	VM-000903.000.00	Support strap for pump	2
12	VM-TE0010.040.TF	Bolt - TE M10 x 40 ZB	4
13	VM-Vedi Tav. 17/37	Pump assembly	1
14	VM-100598.000.00	Barb fitting D.10mm (straight)	1
15	VM-100203.000.00	Flat washer - 17 x 6 x 2 mm (rubber)	1
16	VM-100036.000.00	Threaded Collar - 1/2"	1
17	VM-100178.000.00	Collar (brass) - 1/2" x 5 mm	1
18	VM-100143.000.XX	Pressure gauge - 0-10 Bar - 1/2" MPT	1

## PISTON PUMP



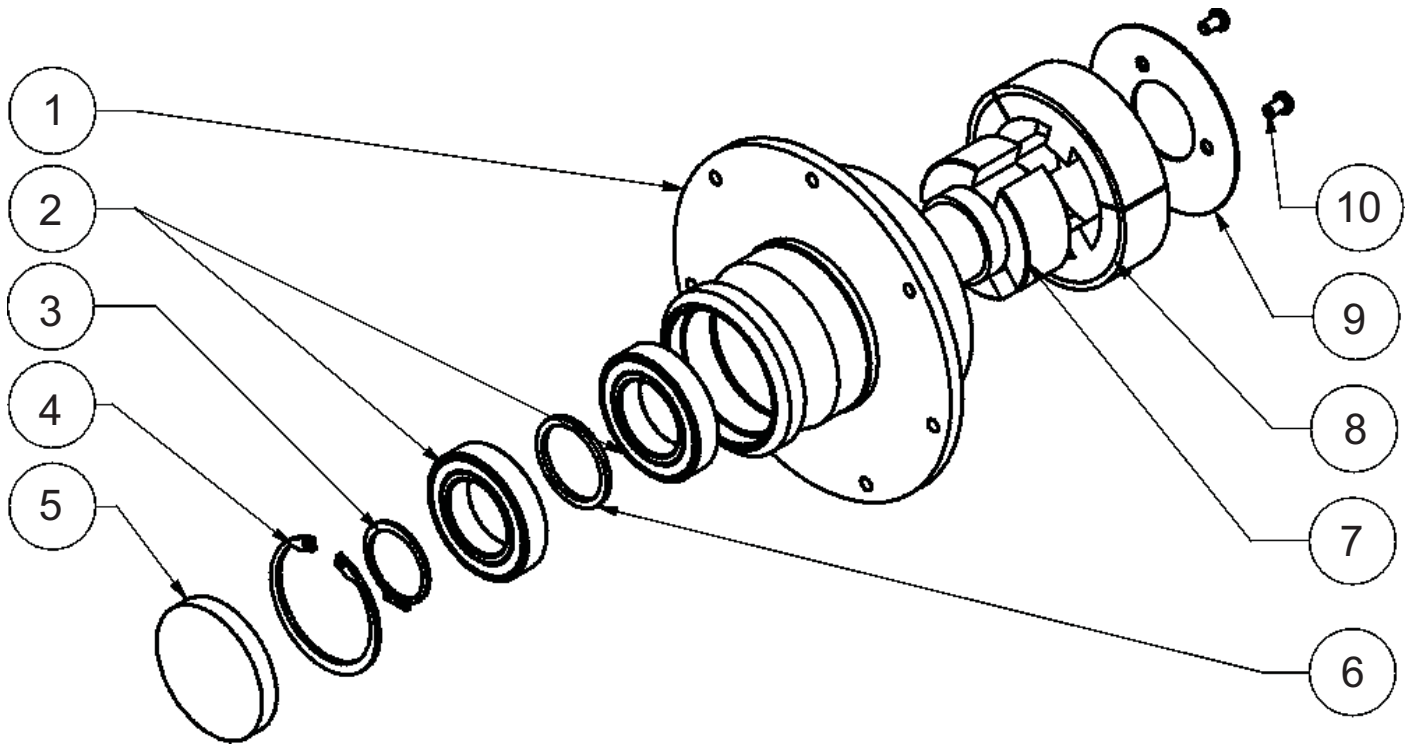
Item#	Part#	Description	Qty
1	VM-000920.000.00	Protective shield for chain/sprocket	1
2	VM-100313.00P.00	Gear - Z=35 (pump shaft)	1
3	VM-TEI010.040.TF	Bolt - TE M10 x 40 (stainless)	1
4	VM-100235.000.00	Chain - 1/2"	1
5	VM-100561.000.00	Pump - Bertolini - Mod. PA830 VC	1
(Please see separate parts guide for Bertolini - Mod. PA830 VC pump)			
6	VM-100038.000.00	Threaded Collar - 1-1/4"	1
7	VM-OR0003.100.00	O-Ring 3100 - 25.07 x 2.62	1
8	VM-OR0003.118.00	O-Ring 3118 - 29.82 x 2.62	1
9	VM-100035.000.00	Barb fitting D.30 mm - 90 degree (1-1/4")	1

## SPIRAL FAN / GEARBOX



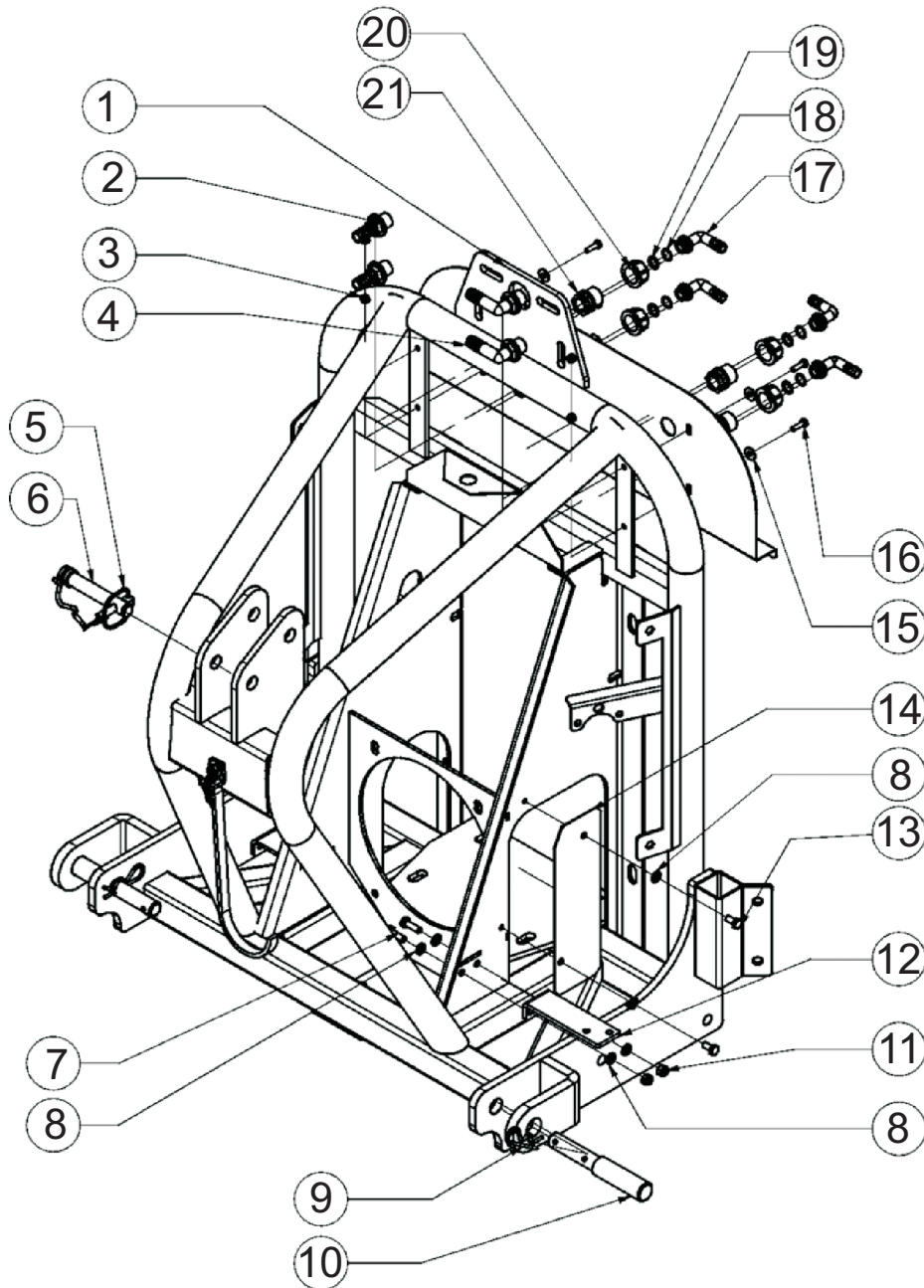
Item#	Part#	Description	Qty
1	VM-GRS010.030.00	Set screw - M10 x 30 mm	1
2	VM-100313.00M.00	Gear - Z=35 (Gearbox shaft)	1
3	VM-CH0010.008.20	Shaft Key - 10 x 8 x 20	1
4	VM-100558.000.00	Gearbox (complete assembly) (see separate parts guide for internal parts to gearbox)	1
5	VM-CH0008.007.50	Shaft Key - 8 x 7 x 50	1
6	VM-000753.000.00	Clutch assembly (free rotation) for fan - Mod. Power 50	1
7	VM-DA0022.001.50	Nut (self-locking) - M22 x 1.5 (basso)	1
8	VM-000005.000.00	Fan blade assembly - Diam. 50 cm	1
9	VM-TCE008.016.00	Bolt - TCEI M8 x 16	7

## CLUTCH ASSEMBLY FOR FAN



Item#	Part#	Description	Qty
1	VM-000041.000.00	Clutch housing/support	1
2	VM-K06008.2RS.00	Bearing - 6008 2RS	2
3	VM-SE0040.000.00	Snap ring (External) D. 40	1
4	VM-SI0068.000.00	Snap ring (External) D. 68	1
5	VM-PO0072.000.10	Dust cap for fan clutch - RCA 72x10	1
6	VM-000040.000.00	Spacing collar for bearings	1
7	VM-000065.003.00	Clutch joint hub (internal)	1
8	VM-000065.000.00	Clutch joint hub (external) with springs and spline	1
9	VM-000041.100.00	Support flange for clutch assembly GRZ	1
10	VM-TBEI06.010.00	Bolt - TBEI M6 x 10 ISO	3

## FITTINGS / FASTNERS / PINS

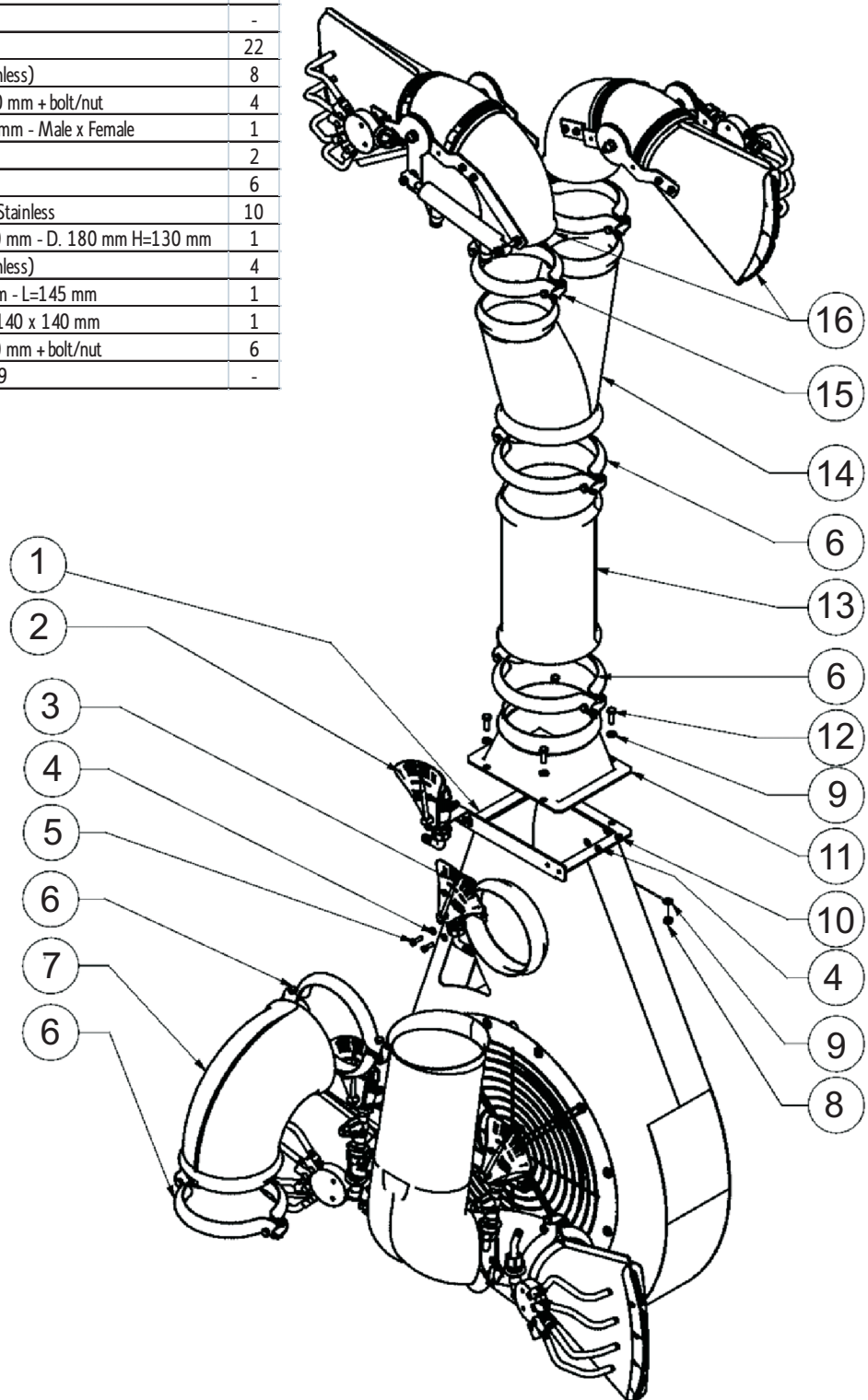


Item#	Part#	Description	Qty
1	VM-000002.100.00	Sprayer main frame (tubular) - Power 50/55	1
2	VM-100341.000.00	Barb fitting D.15 mm x 1/2"MPT	2
3	VM-DAI006.000.00	Nut (self-locking) - M6 Stainless	4
4	VM-100340.000.00	Barb fitting D.15 mm x 1/2"MPT - 90 degree	2
5	VM-100273.000.00	Circular clip + rubber strap	1
6	VM-100272.000.00	Linkage pin - D. 19 mm	1
7	VM-TE0008.025.TF	Bolt - TE M8x25 ZB	3
8	VM-RP0008.000.00	Washer - 8 ZB	6
9	VM-CP0004.000.00	R-clip - Diam. 4 mm	2
10	VM-100474.000.00	Linkage pin - D. 22-28 mm - L=180 mm	2
11	VM-DA0008.000.00	Nut (self-locking) - M8	3

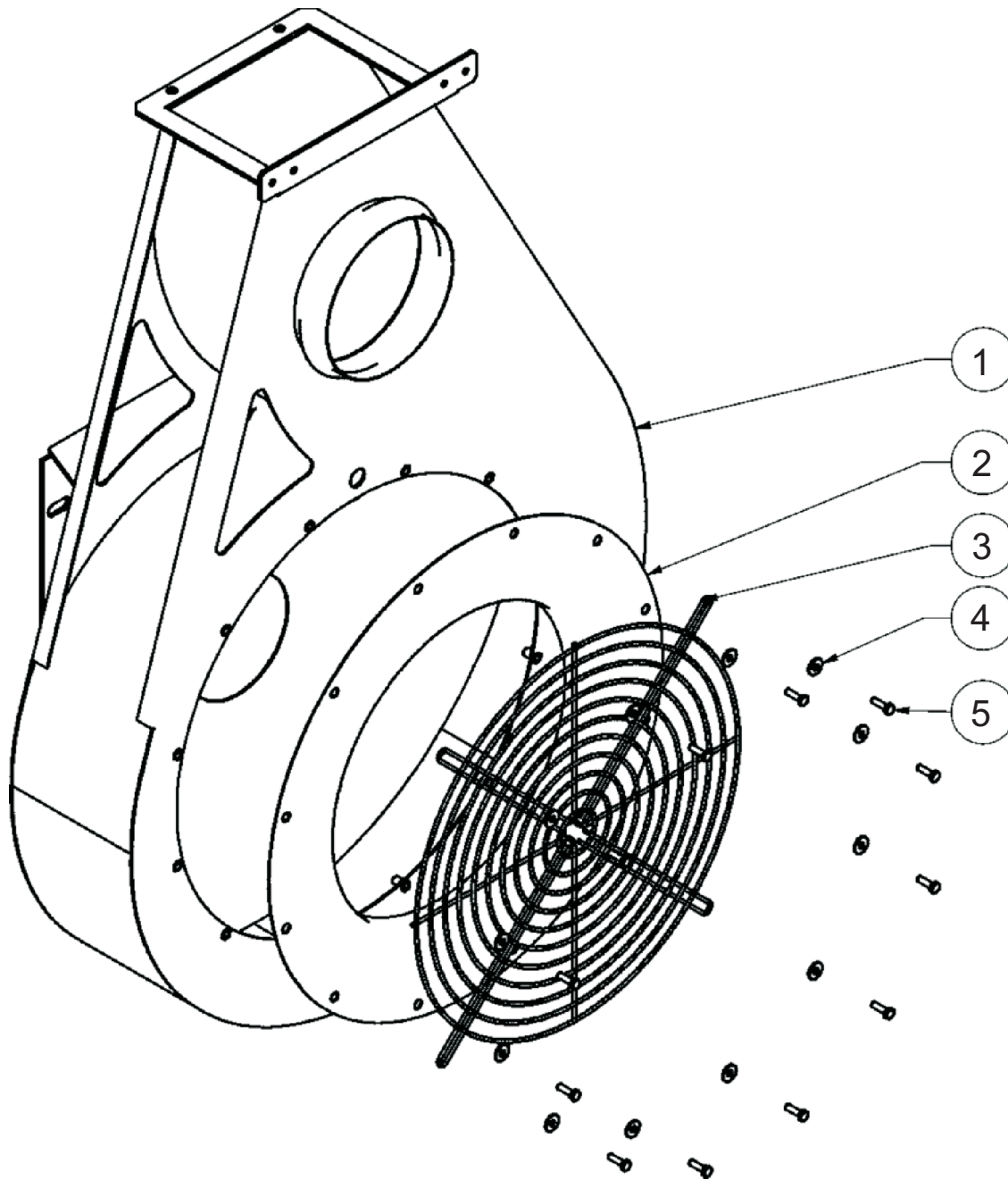
Item#	Part#	Description	Qty
12	VM-100596.000.00	Support bracket for 3-way valve	1
13	VM-TE0008.016.TF	Bolt - TE M8 x 16 (zinc)	2
14	VM-000904.000.00	Cover plate	1
15	VM-RPI006.018.00	Washer - 6 x 18 (stainless)	4
16	VM-TEI006.020.TF	Bolt - TE M6 x 20 (stainless)	4
17	VM-100184.000.00	Barb fitting D.13 mm - 90 degree	4
18	VM-OR0002.056.00	O-Ring 2056 - 14 x 1.78	4
19	VM-OR0000.117.00	O-Ring 117 - 13.10 x 2.62	4
20	VM-100058.000.00	Threaded Collar - 3/4"	4
21	VM-100002.000.00	Reducer - 3/4"M x 1/2"FM	4

## FAN HOUSING / SPRAY TOWER

Item#	Part#	Description	Qty
1	Fan housing PW 50	---> see Page 17	-
2	Flow regulator - Upper/Left	---> see Page 22	-
3	Flow regulator - Upper/Right	---> see Page 22	-
4	VM-RPI006.000.00	Washer - 6 (stainless)	22
5	VM-TEI006.020.TF	Bolt - TE M6 x 20 (stainless)	8
6	VM-000024.000.00	Collar/clamp - Diam 180 mm + bolt/nut	4
7	VM-000890.000.00	Elbow-Tube - Diam 180 mm - Male x Female	1
8	VM-D00008.000.OT	Nut - M8 (brass)	2
9	VM-RPI008.000.00	Washer - 8 (stainless)	6
10	VM-DAI006.000.00	Nut (self-locking) - M6 Stainless	10
11	VM-000929.000.00	Flange/collar - 250x200 mm - D. 180 mm H=130 mm	1
12	VM-TEI008.025.TF	Bolt - TE M8 x 25 (stainless)	4
13	VM-000925.000.00	Extension tube - 180 mm - L=145 mm	1
14	VM-000476.000.00	Y-diverter tube - 180 x 140 x 140 mm	1
15	VM-000025.000.00	Collar/clamp - Diam 140 mm + bolt/nut	6
16	Fan difusser (Right/Left) D. 140 mm	---> see Page 19	-

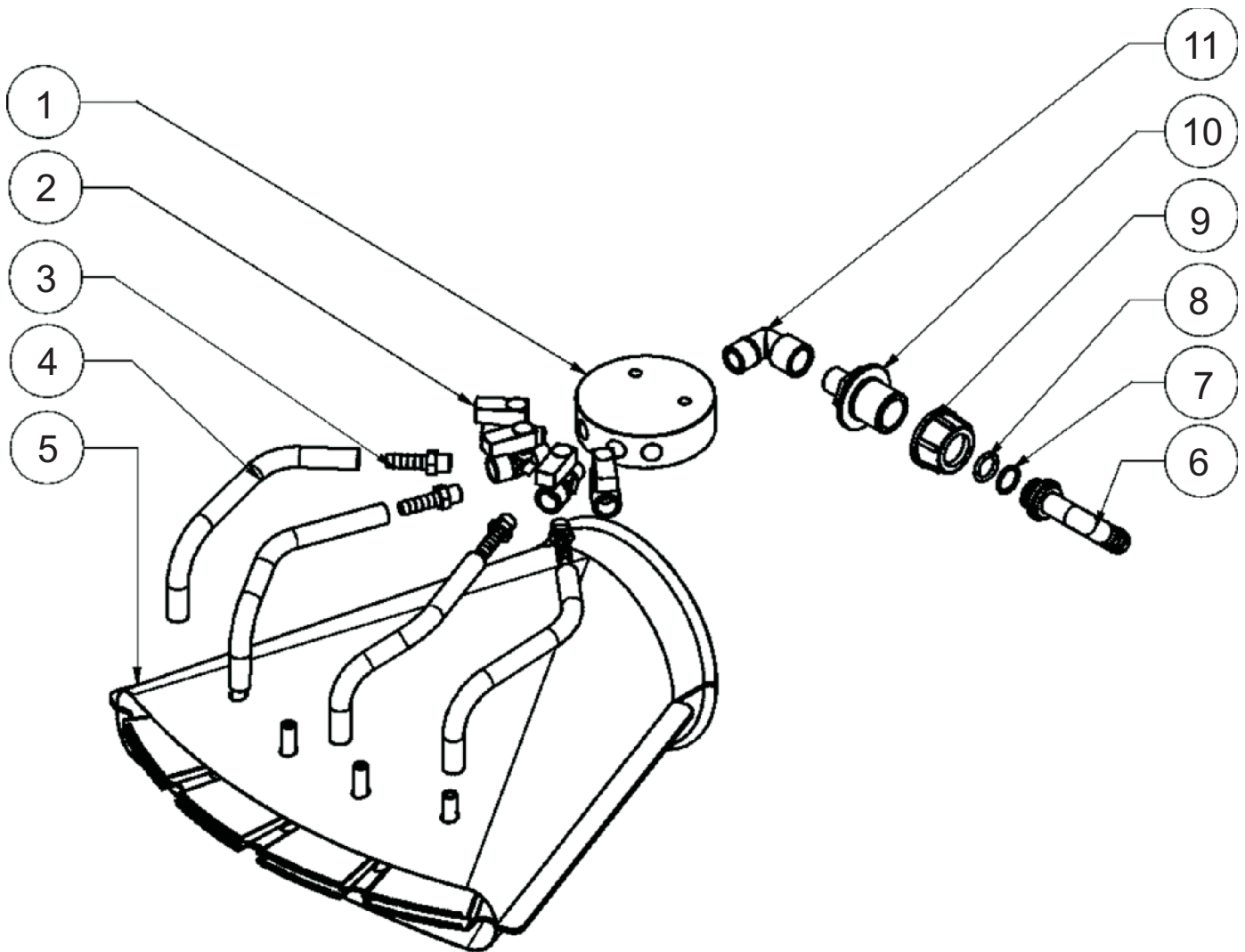


## FAN HOUSING / GRILLE



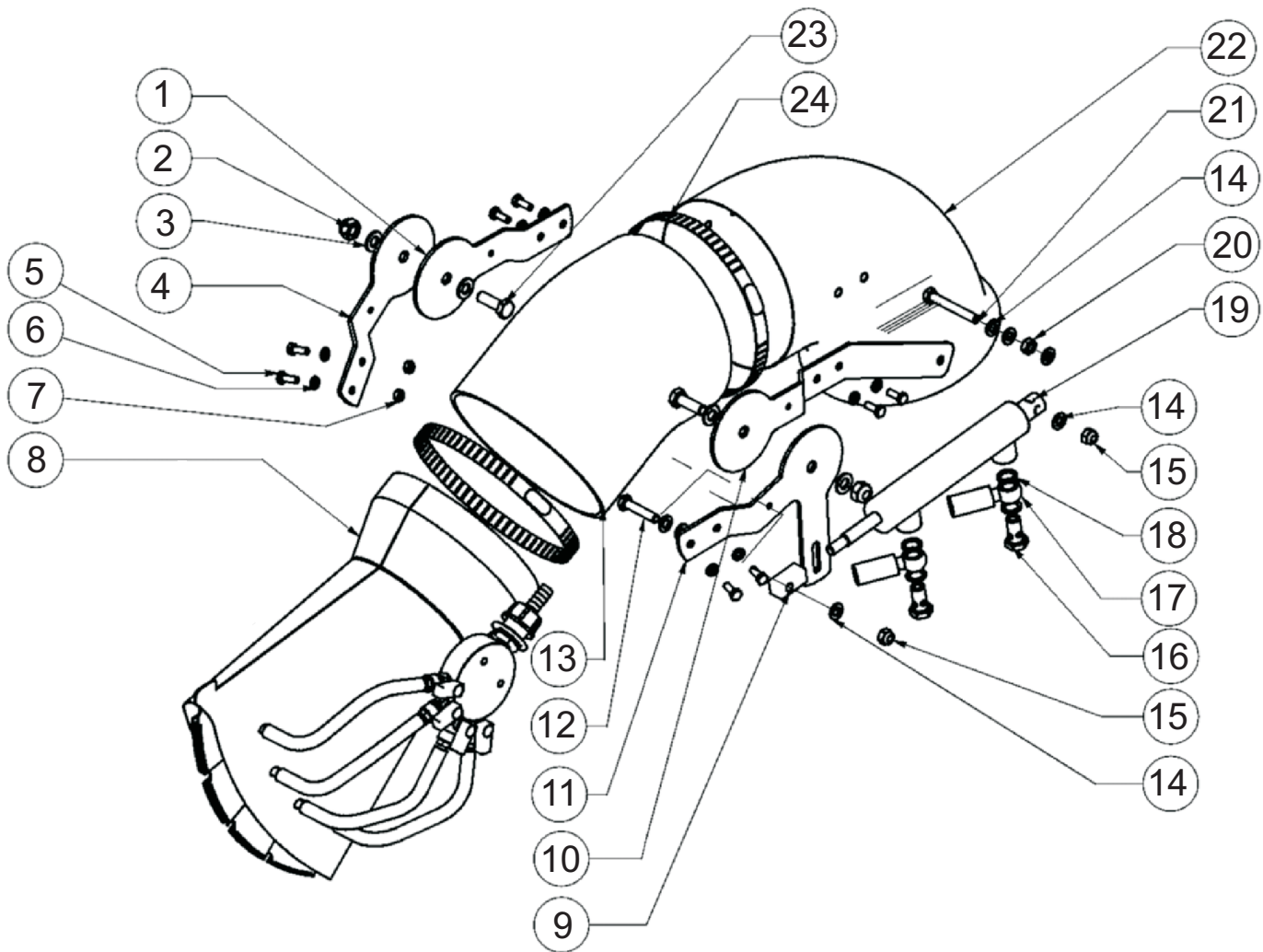
Item#	Part#	Description	Qty
1	VM-000205.000.00	Fan housing assembly - Power 50	1
2	VM-000924.000.00	Protective collar - for fan access - 50 cm fan	1
3	VM-100467.000.00	Fan grill / cover - 50 cm fan	1
4	VM-RPI006.018.00	Washer - 6 x 18 (stainless)	12
5	VM-TEI006.020.TF	Bolt - TE M6 x 20 (stainless)	12

**LOWER FAN DIFFUSER ASSEMBLY**



Item#	Part#	Description	Qty
1	VM-200042.000.00	Distribution block - spray valves (round)	1
2	VM-100271.000.02	Ball Valve - 1/4" M x 1/4" FM (GHILUX)	4
3	VM-100518.000.00	Barb fitting D.10mm x 1/4M	4
4	VM-100069.000.00	Black tubing - Nr. 20 - 8 x 13 mm	4
5	VM-000493.000.00	Fan spray diffuser (4 nozzle) - Stainless	1
6	VM-100184.000.00	Barb fitting D.13 mm - 90 degree	1
7	VM-OR0002.056.00	O-Ring 2056 - 14 x 1.79	1
8	VM-OR0000.117.00	O-Ring 117 - 13.10 x 2.62	1
9	VM-100058.000.00	Threaded Collar - 3/4"	1
10	VM-100194.000.00	Reducer - 3/4"M x 3/8"M	1
11	VM-100269.000.00	Elbow - 3/8" M x F	1

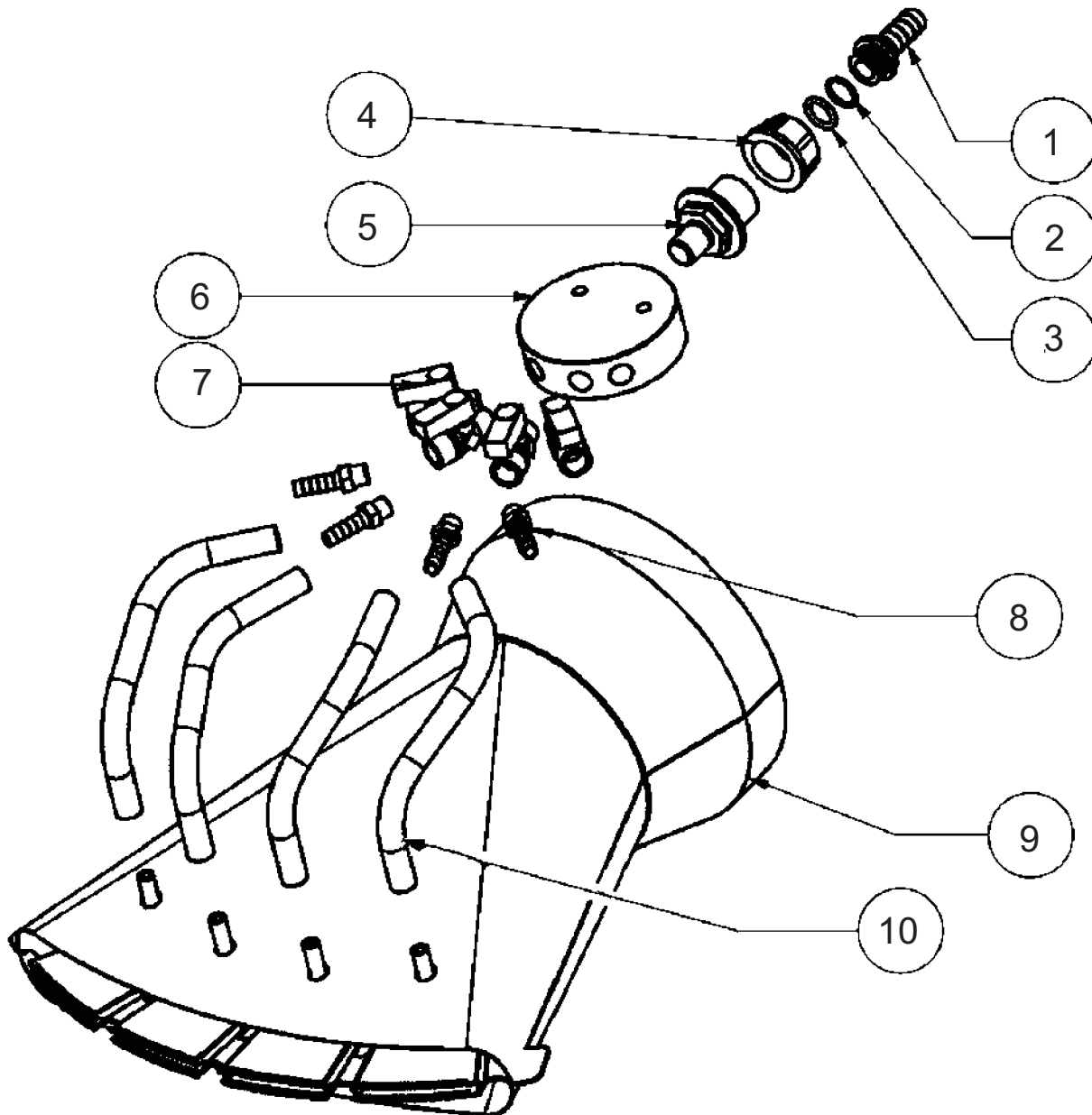
## COMPLETE UPPER FAN ASSEMBLY (L/R)



Item#	Part#	Description	Qty
1	VM-000914.000.00	Support strap for pivot point	1
2	VM-DA0010.000.00	Nut (self-locking) - M10	2
3	VM-RPI010.000.00	Washer - 10 (stainless)	4
4	VM-000915.000.00	Support strap for pivot point	1
5	VM-TEI006.016.TF	Bolt - TE M6 x 16 (stainless)	8
6	VM-RPI006.000.00	Washer - 6 (stainless)	8
7	VM-D00006.000.00	Nut - M6 ZB	2
8		Upper fan assembly (Right/Left) ---> see Page 20	1
9	VM-000918.000.00	Piston support block - M8 mm	1
10	VM-000912.000.00	Support strap for pivot point	1
11	VM-000913.000.00	Support strap for pivot point	1
12	VM-TEI008.040.TF	Bolt - TE M8 x 40 (stainless)	1
13	VM-100223.000.11	Curved extension - D. 140 mm (Power 50)	1

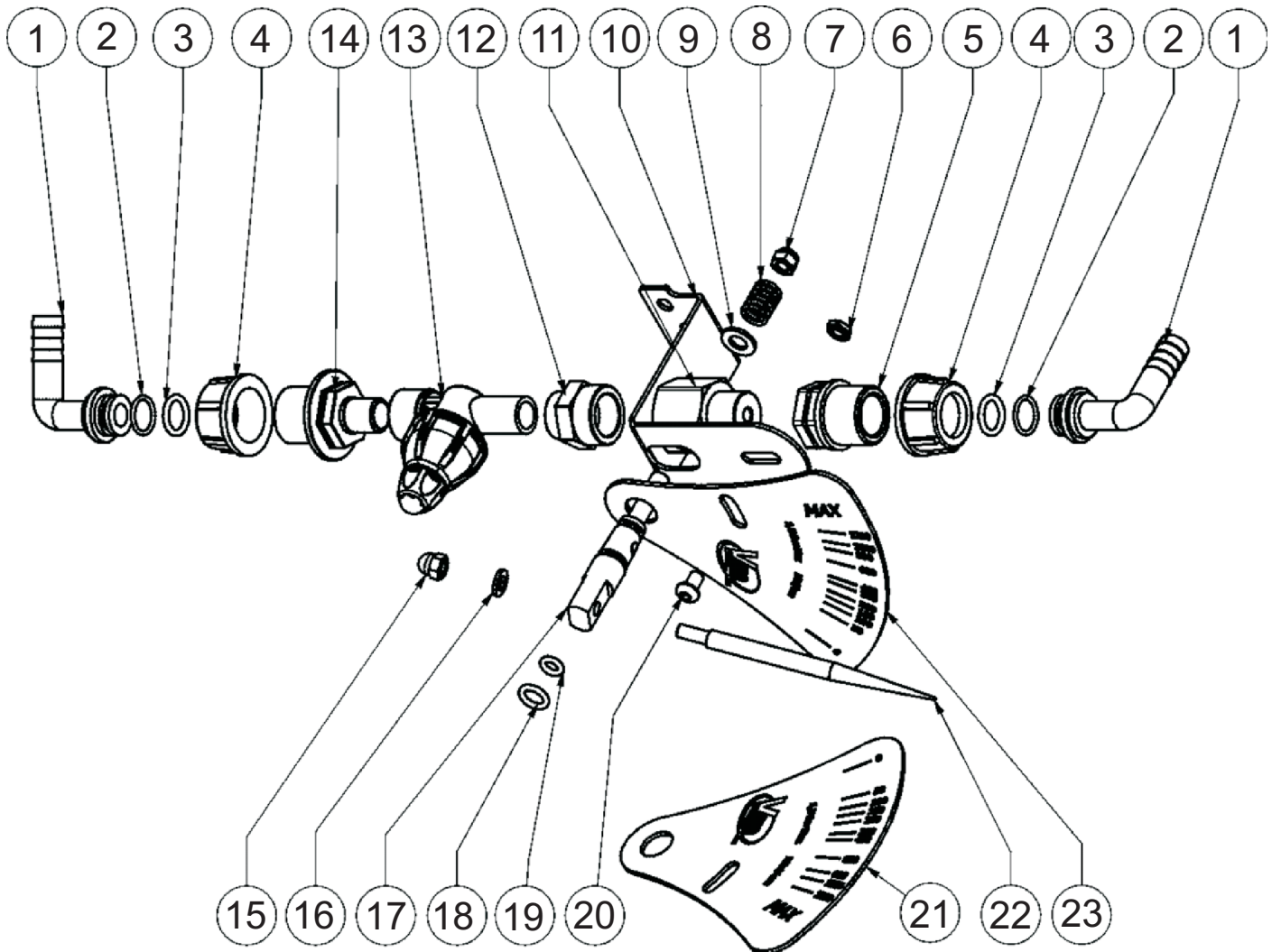
Item#	Part#	Description	Qty
14	VM-RPI008.000.00	Washer - 8 (stainless)	7
15	VM-DA0008.000.00	Nut (self-locking) - M8	2
16	VM-100569.000.00	Banjo bolt - 1/4" - perforated	2
17	VM-100325.000.00	Hydraulic hose - 1/4" R1 - L = 2500 mm	2
18	VM-100580.000.08	Copper Washer - 1/4"	4
19	VM-100314.000.00	Hydraulic piston (dual action) 35-12-100	1
20	VM-D00008.000.0A	Nut - M8	2
21	VM-TEI008.060.TF	Bolt - TE M8 x 60 (stainless)	1
22	VM-000926.000.00	Elbow-Tube - Diam 140 mm - 75 degree (PW 50)	1
23	VM-TEI010.030.TF	Bolt - TE M10 x 30 (stainless)	2
24	VM-F0140.160.00	Hose clamp W4 - 12 x 140-160 mm (stainless)	1

## UPPER FAN DIFFUSER ASSEMBLY



Item#	Part#	Description	Qty
1	VM-100286.000.00	Barb fitting D.13 mm (straight)	1
2	VM-OR0002.056.00	O-Ring 2056 - 14 x 1.78	1
3	VM-OR0000.117.00	O-Ring 117 - 13.10 x 2.62	1
4	VM-100058.000.00	Threaded Collar - 3/4"	1
5	VM-100194.000.00	Reducer - 3/4"M x 3/8"M	1
6	VM-200042.000.00	Distribution block - spray valves (round)	1
7	VM-100271.000.02	Ball Valve - 1/4" M x 1/4" FM (GHILUX)	4
8	VM-100518.000.00	Barb fitting D.10mm x 1/4M	4
9	VM-000927.000.00	Fan spray diffuser (4 nozzle) - D. 140 mm - PW50	1
10	VM-100069.000.00	Black tubing - Nr. 20 - 8 x 13 mm	4

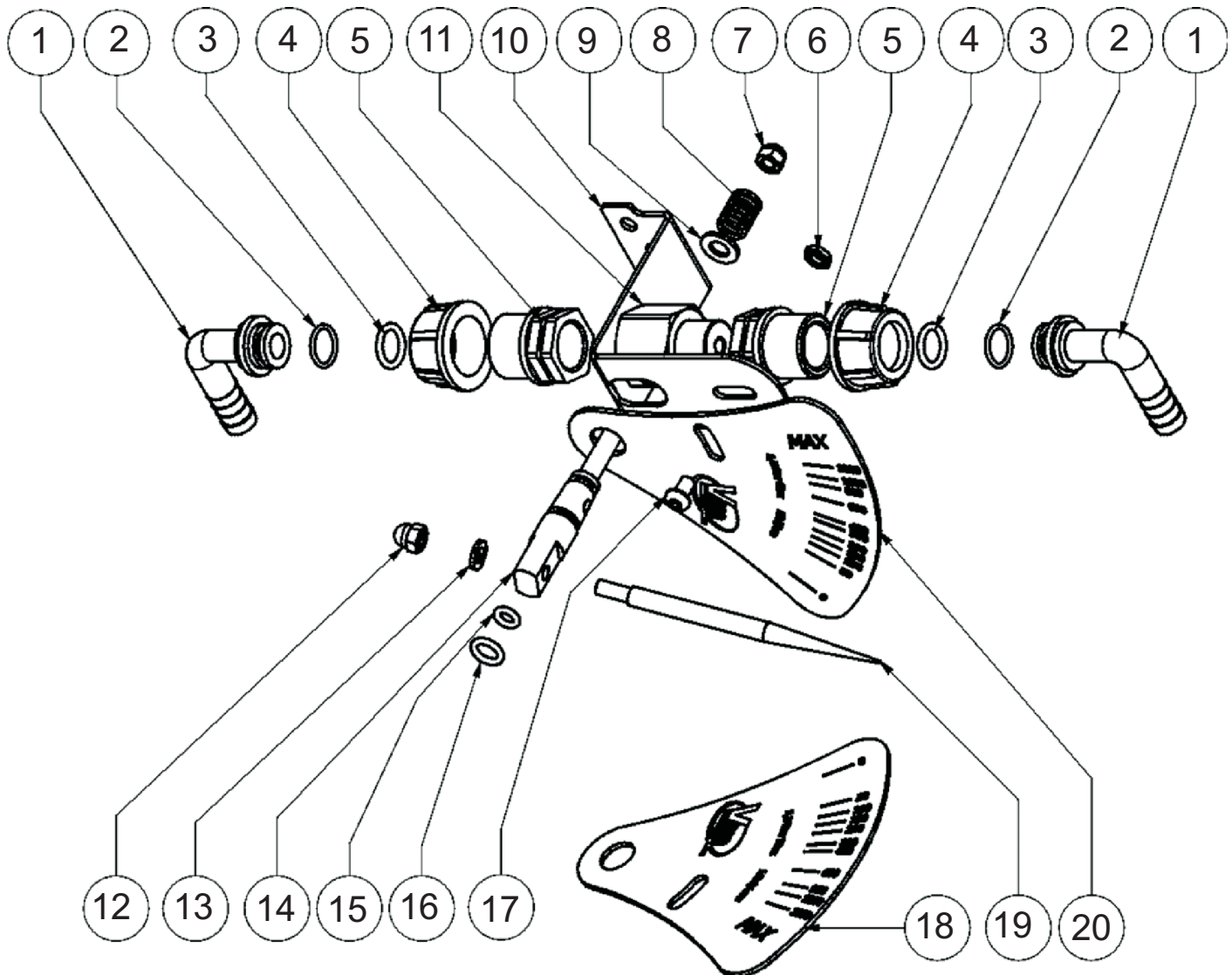
## LOWER FLOW REGULATOR ASSEMBLY (L/R)



Item#	Part#	Description	Qty
1	VM-100184.000.00	Barb fitting D.13 mm - 90 degree	2
2	VM-OR0002.056.00	O-Ring 2056 - 14 x 1.78	2
3	VM-OR0000.117.00	O-Ring 117 - 13.10 x 2.62	2
4	VM-100058.000.00	Threaded Collar - 3/4"	2
5	VM-100002.000.00	Reducer - 3/4"M x 1/2"FM	1
6	VM-D00006.000.0B	Nut - M6 Stainless (basso)	1
7	VM-DAI006.000.00	Nut (self-locking) - M6 Stainless	1
8	VM-100603.000.00	Spring - D 1.5mm - Ext 11 mm - L=20 mm	1
9	VM-RPI008.000.00	Washer - 8 (stainless)	1
10	VM-000921.000.00	Support bracket for flow meter	1
11	VM-200051.000.00	Flow meter main body assembly - Hex 30 x 53	1
12	VM-100604.000.00	Reducer - 3/8" x 1/2" F x F	1

Item#	Part#	Description	Qty
13	VM-100452.000.00	Check valve with On/Off valve - 3/8" M x F	1
14	VM-100194.000.00	Reducer - 3/4"M x 3/8"M	1
15	VM-D00006.000.IC	Cap Nut - M6 (stainless)	1
16	VM-RPI006.000.00	Washer - 6 (stainless)	1
17	VM-200052.000.00	Flow meter control shaft	1
18	VM-OR0003.037.00	O-Ring 111 - 9.19 x 2.62	1
19	VM-OR0003.024.00	O-Ring - 6.02 x 2.62 NBR	1
20	VM-TBEI06.010.00	Bolt - TBEI M6 x 10 ISO	1
21	VM-100602.0SX.00	Flow meter graduated plate (stainless) - LEFT	1
22	VM-200043.000.00	Needle	1
23	VM-100602.0DX.00	Flow meter graduated plate (stainless) - RIGHT	1

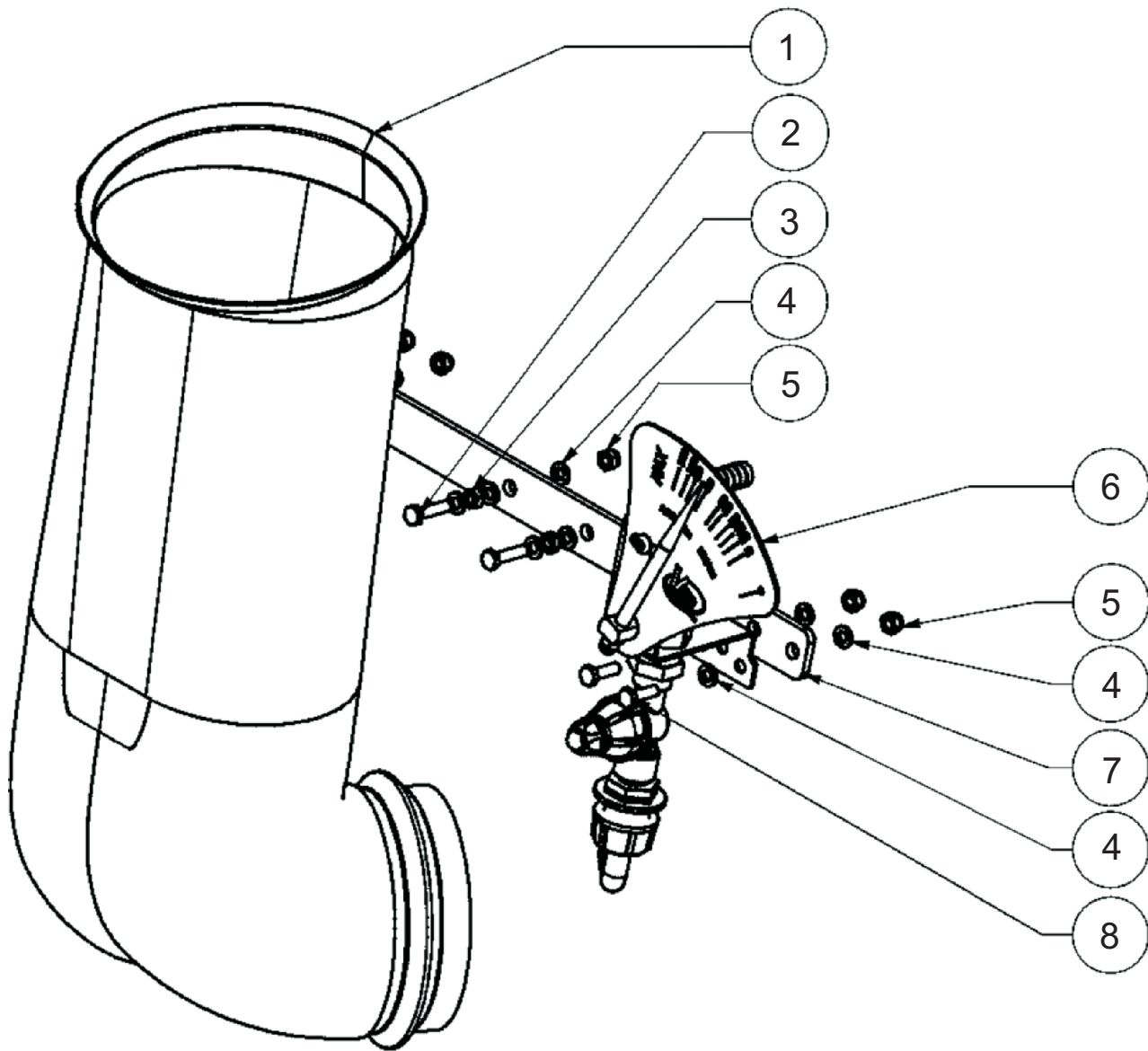
## UPPER FLOW REGULATOR ASSEMBLY (L/R)



Item#	Part#	Description	Qty
1	VM-100184.000.00	Barb fitting D.13 mm - 90 degree	2
2	VM-OR0002.056.00	O-Ring 2056 - 14 x 1.78	2
3	VM-OR0000.117.00	O-Ring 117 - 13.10 x 2.62	2
4	VM-100058.000.00	Threaded Collar - 3/4"	2
5	VM-100002.000.00	Reducer - 3/4"M x 1/2"FM	2
6	VM-D00006.000.0B	Nut - M6 Stainless (basso)	1
7	VM-DAI006.000.00	Nut (self-locking) - M6 Stainless	1
8	VM-100603.000.00	Spring - D 1.5mm - Ext 11 mm - L=20 mm	1
9	VM-RPI008.000.00	Washer - 8 (stainless)	1
10	VM-000921.000.00	Support bracket for flow meter	1

Item#	Part#	Description	Qty
11	VM-200051.000.00	Flow meter main body assembly - Hex 30 x 53	1
12	VM-D00006.000.IC	Cap Nut - M6 (stainless)	1
13	VM-RPI006.000.00	Washer - 6 (stainless)	1
14	VM-200052.000.00	Flow meter control shaft	1
15	VM-OR0003.024.00	O-Ring - 6.02 x 2.62 NBR	1
16	VM-OR0003.037.00	O-Ring 111 - 9.19 x 2.62	1
17	VM-TBEI06.010.00	Bolt - TBEI M6 x 10 ISO	1
18	VM-100602.05X.00	Flow meter graduated plate (stainless) - LEFT	1
19	VM-200043.000.00	Needle	1
20	VM-100602.0DX.00	Flow meter graduated plate (stainless) - RIGHT	1

## FLOW REGULATOR SUPPORT



Item#	Part#	Description	Qty
1	VM-000910.000.00	Y-Tube (curved) - Diam. 140 mm	1
2	VM-TEI006.025.TF	Bolt - TE M6 x 25 (stainless)	2
3	VM-D00006.000.OT	Nut - M6 (brass)	2
4	VM-RPI006.000.00	Washer - 6 (stainless)	14
5	VM-DAI006.000.00	Nut (self-locking) - M6 Stainless	6
6	Flow regulator - Lower nozzles	---> see parts list on Page 21	-
7	VM-000917.000.00	Support strap for upper dosage meters	1
8	VM-TEI006.020.TF	Bolt - TE M6 x 20 (stainless)	4



*For Questions or Technical Assistance Contact:*

## **MG Equipment Co.**

PO Box 655  
Vineburg, CA 95487  
Tel: (707) 996-2605  
Mobile: (510) 813-2046  
[mgequipment@gmail.com](mailto:mgequipment@gmail.com)