



REPLACEMENT PARTS CATALOG



Fast 50 Vineyard Sprayer


EQUIPMENT COMPANY
Specialized Equipment for Agriculture



VMA Parts Catalog

Fast 50 Vineyard Sprayer

MG Equipment Company specializes in unique tractor implements designed specifically for vineyards and orchards.

This catalog is designed to detail all the parts and components for VMA sprayers. It is divided into sections for each part of the implement and includes exploded diagrams and a detailed parts list. Please note that some parts may be fitted to more than one VMA sprayer.

To ensure a long life of reliable and trouble-free service for your implements, use only genuine VMA replacement parts.

It is our goal to meet or exceed the expectations of our customers and to offer unsurpassed service and parts support. We partner with each of our manufacturers to provide the best possible after-sales-support.

We thank you for your valued business. We remain at your complete disposal for any information you require regarding any of our products.

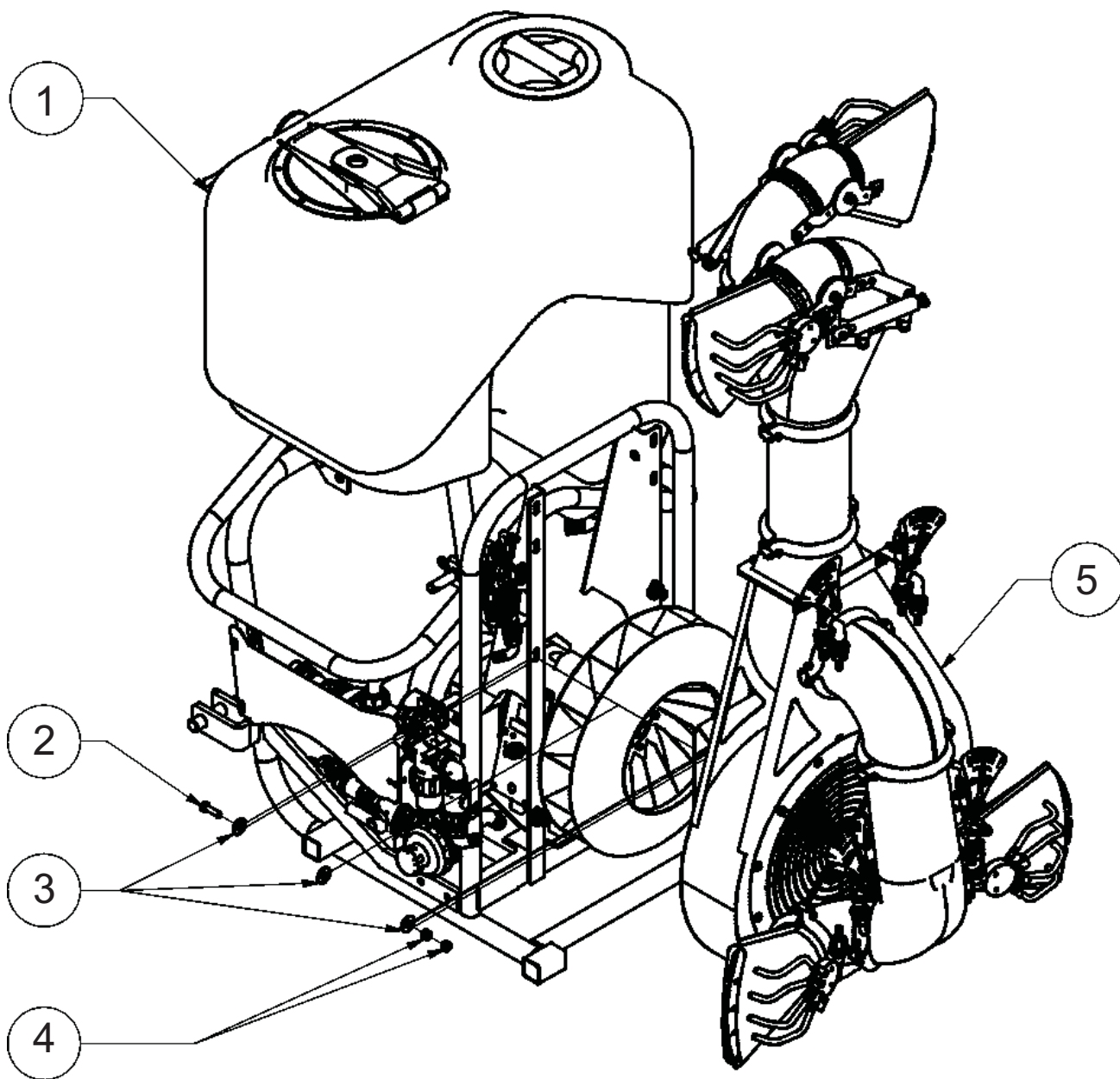
For Replacement Parts Sales and Information contact:

MG Equipment Co.

PO Box 655 Vineburg, CA 95487
mgequipment@gmail.com

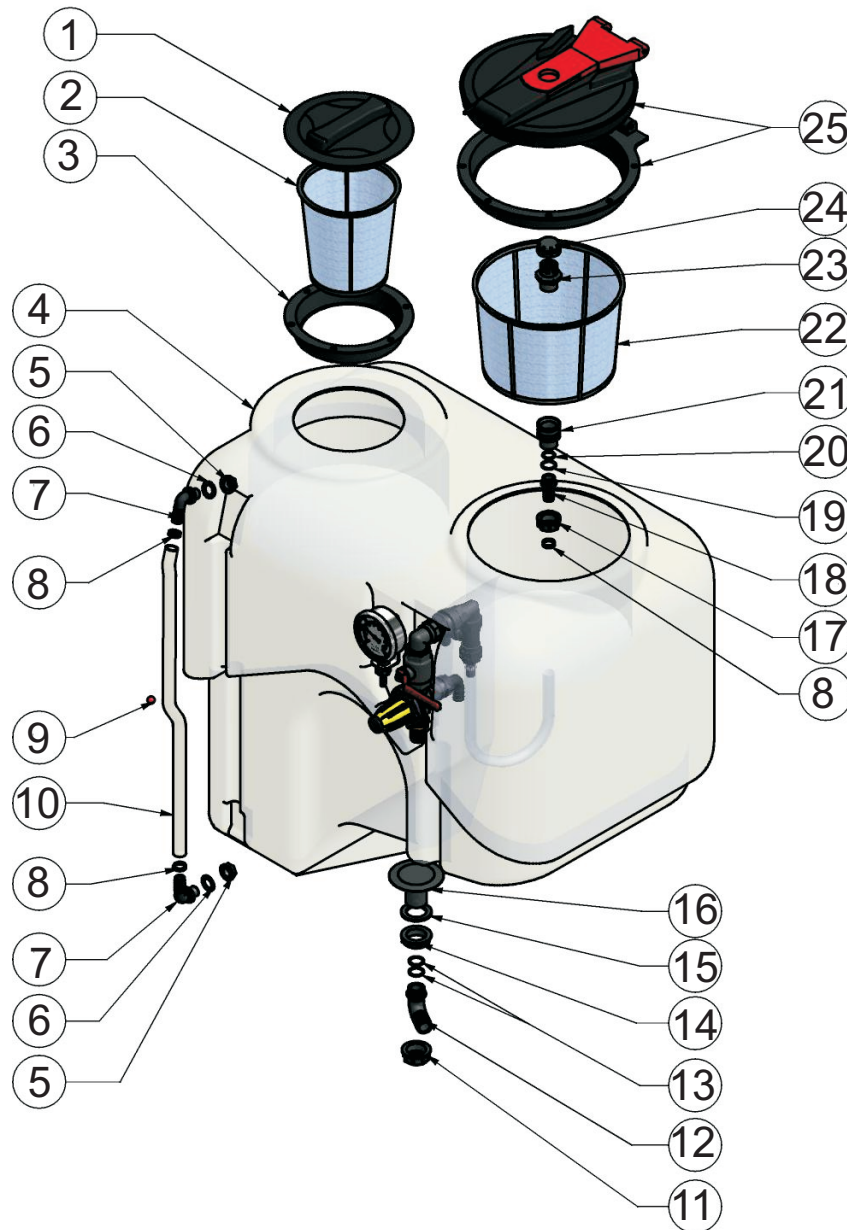
Tel: (707) 996-2605
Fax: (707) 996-3405
Mobile: (510) 813-2046

MAIN BODY / FRAME



Item#	Part#	Description	Qty
1	VM-000033.200.00	Poly tank - FAST 400L	1
2	VM-TE0012.040.TF	Bolt - TE M12 x 40	5
3	VM-RP0012.036.00	Washer - 12 x 36 mm SP.2.5	12
4	VM-D00012.000.00	Nut - M12	8
5	----	Fan housing and assembly - see page 12	1

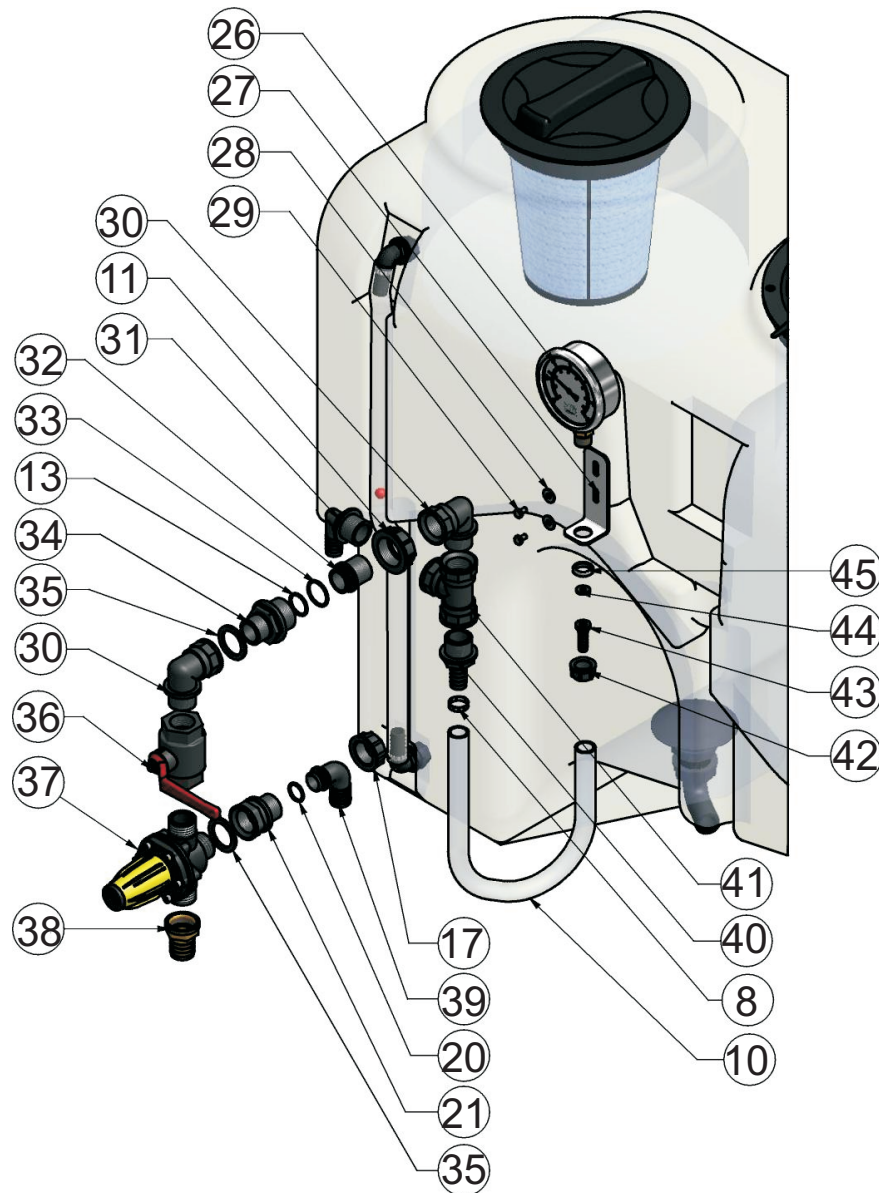
POLY TANK & FILTERS



Item#	Part#	Description	Qty
1	VM-100014.000.00	Lid with threads - Diam = 250 mm	1
2	VM-100011.000.00	Filter basket - Diam - 204 mm x 240 mm (D = 8" x 9.4")	1
3	VM-100013.000.00	Threaded ring with seal - D=250 mm	1
4	VM-000033.000.XX	Poly tank - 400 KG - VMA Yellow	1
5	VM-100039.000.00	Collar - 1/2"	2
6	VM-100046.000.00	Flat washer - 21 x 33 x 2 mm (rubber)	2
7	VM-100024.000.00	Barb fitting D.20 mm x 1/2"MPT - 90 degree	2
8	VM-F0016.025.00	Hose clamp W2 - 9 x 16-25 mm	4
9	VM-100131.000.00	Level indicator	1
10	VM-100339.000.00	Hose - D=20 mm	2
11	VM-100038.000.00	Threaded Collar - 1-1/4"	2
12	VM-100035.000.00	Barb fitting D.30 mm - 90 degree (1-1/4")	1
13	VM-OR0003.100.00	O-Ring 3100 - 25.07 x 2.62	3

Item#	Part#	Description	Qty
14	VM-100040.000.00	Collar - 1-1/4"	1
15	VM-100049.000.00	Flat washer - 40 x 60 x 4 mm (rubber)	1
16	VM-100044.000.00	Drain mouthpiece - G.1"1/4M	1
17	VM-100037.000.00	Threaded Collar - 1"	2
18	VM-100029.000.00	Barb fitting D.20 mm	1
19	VM-OR0000.132.00	O-Ring 132 - 23.81 x 2.62	1
20	VM-OR0003.081.00	O-Ring 3081 - 24.24 x 2.62	2
21	VM-100290.000.00	Coupling - 1"M x 1" F	2
22	VM-100108.000.00	Filter basket - Diam - 305 mm x 245 mm (D = 12" x 9.6")	1
23	VM-100094.00F.00	Coupling - 1"M - with holes	1
24	VM-TF0001.00F.00	Threaded cap with holes - 1" F - D=6 mm holes	1
25	VM-100015.000.00	Lid with hinge & flange - Diam = 367 mm	1

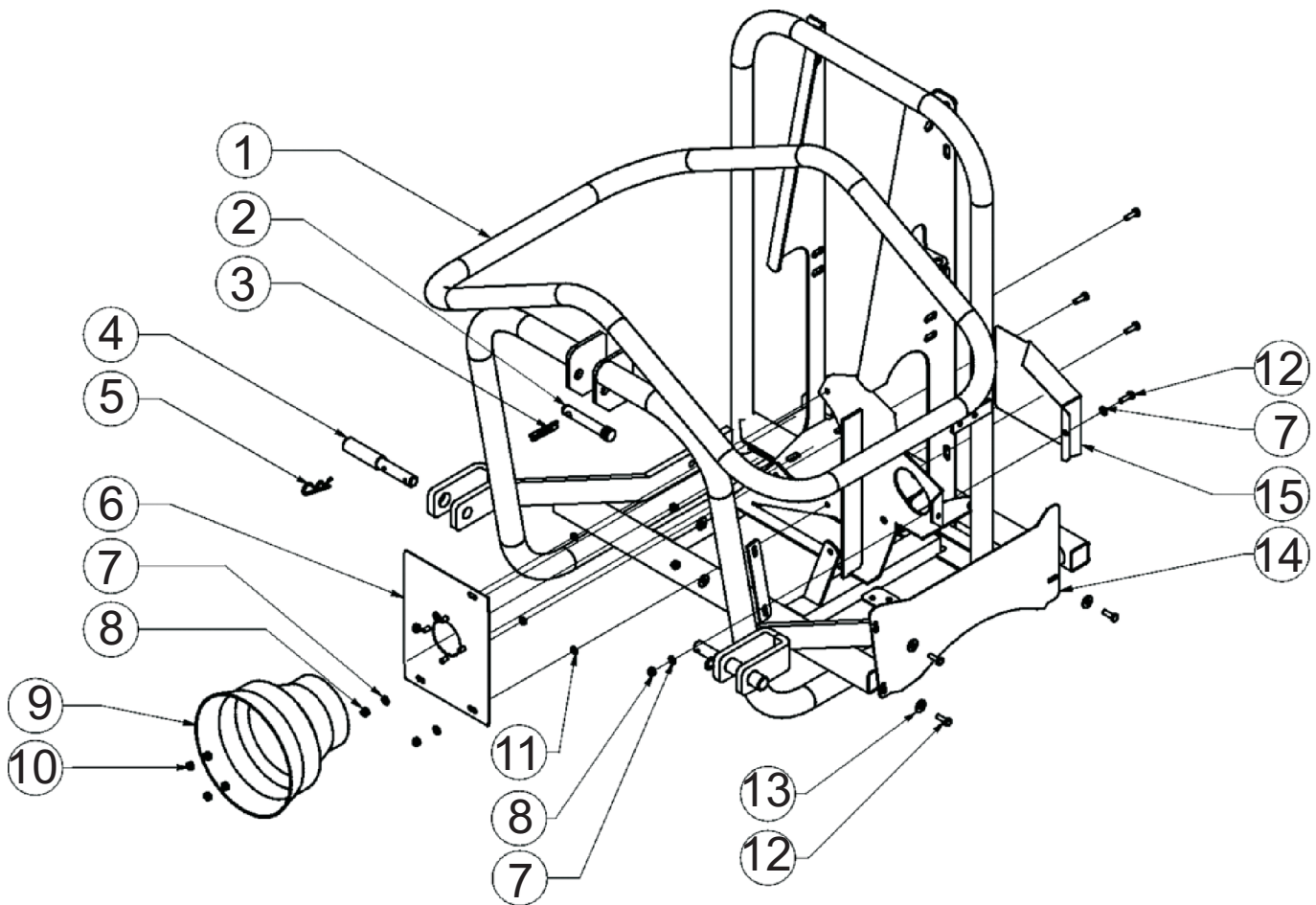
POLY TANK FITTINGS



Item#	Part#	Description	Qty
8	VM-F0016.025.00	Hose clamp W2 - 9 x 16-25 mm	4
10	VM-100339.000.00	Hose - D=20 mm	2
11	VM-100038.000.00	Threaded Collar - 1-1/4"	2
13	VM-OR0003.100.00	O-Ring 3100 - 25.07 x 2.62	3
17	VM-100037.000.00	Threaded Collar - 1"	2
20	VM-OR0003.081.00	O-Ring 3081 - 24.24 x 2.62	2
21	VM-100290.000.00	Coupling - 1"M x 1" F	2
26	VM-100067.000.00	Pressure gauge - D = 100 mm - 0-6 Bar	1
27	VM-000223.000.00	Support strap for pressure gauge	1
28	VM-RP0006.018.00	Washer - 6 x 18 (stainless)	2
29	VM-TEI006.010.TF	Bolt - TE M6 x 10	2
30	VM-100091.000.00	Street L - 1" M x F	2
31	VM-100427.000.00	Barb fitting D.20 mm x 1" MPT- 90 degree	1
32	VM-100411.000.00	Barbed fitting - 1" M	1

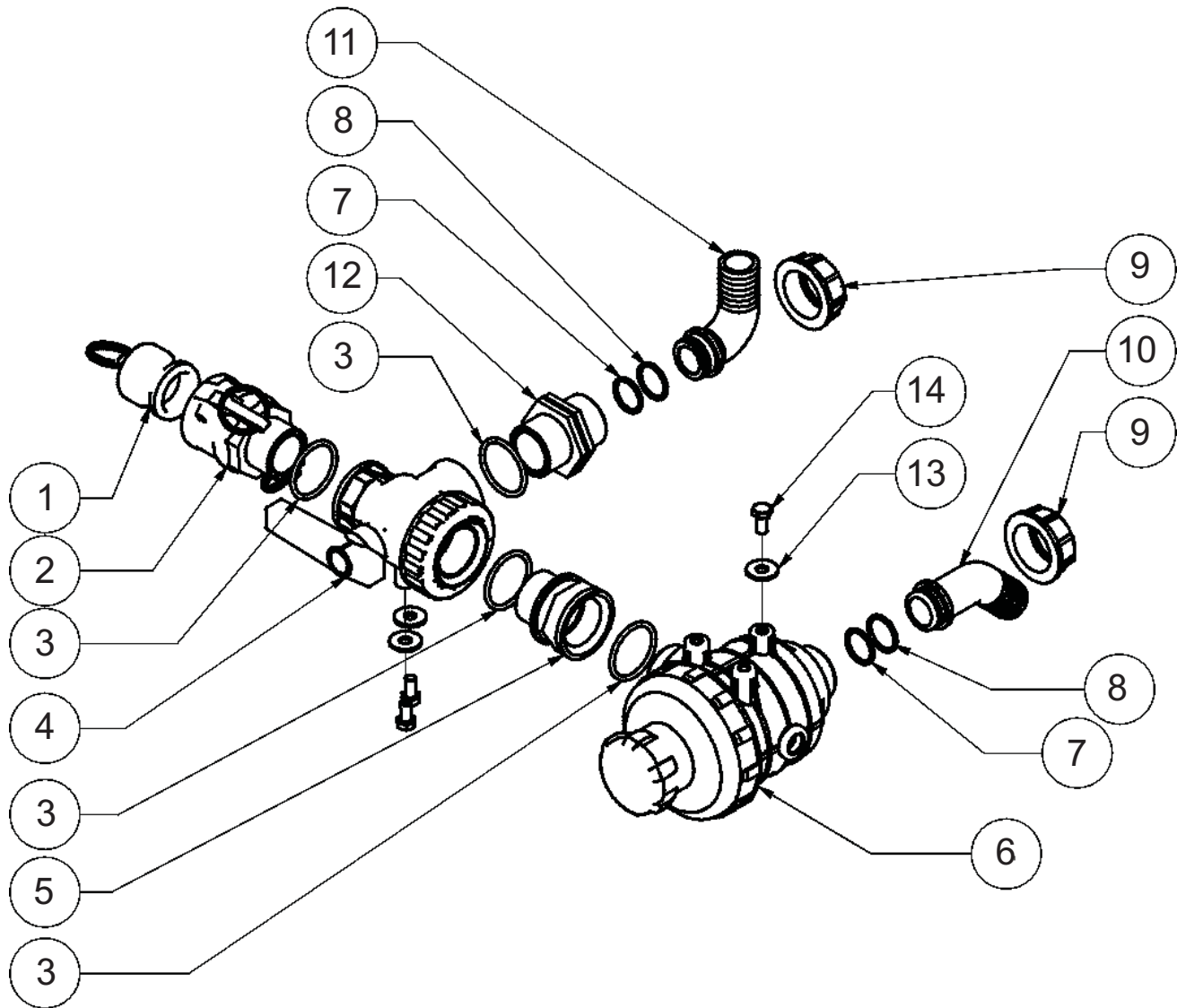
Item#	Part#	Description	Qty
33	VM-OR0003.118.00	O-Ring 3118 - 29.82 x 2.62	1
34	VM-100095.000.00	Reducer - 1"M x 1-1/4"M	1
35	VM-100048.000.00	Flat washer - 33 x 45 x 3 mm (rubber)	2
36	VM-100186.000.00	Ball Valve - 2 way - 1"F x 1"F	1
37	VM-100045.000.00	Pressure regulator - 1"MPT x 1"MPT x 1"MPT	1
38	VM-100179.000.00	Barb fitting D.30 mm - (1" - FPT)	1
39	VM-100159.000.00	Barb fitting D.25 mm - 90 degree	1
40	VM-100185.000.00	Barb fitting D.20 mm - (1" - FPT)	1
41	VM-100041.000.00	Tee - 1"F x 1"F x 1"F	1
42	VM-100036.000.00	Threaded Collar - 1/2"	1
43	VM-100598.000.00	Barb fitting D.10mm (straight)	1
44	VM-100203.000.00	Flat washer - 17 x 6 x 2 mm (rubber)	1
45	VM-100178.000.00	Collar (brass) - 1/2" x 5 mm	1

STEEL FRAME & SHIELDS



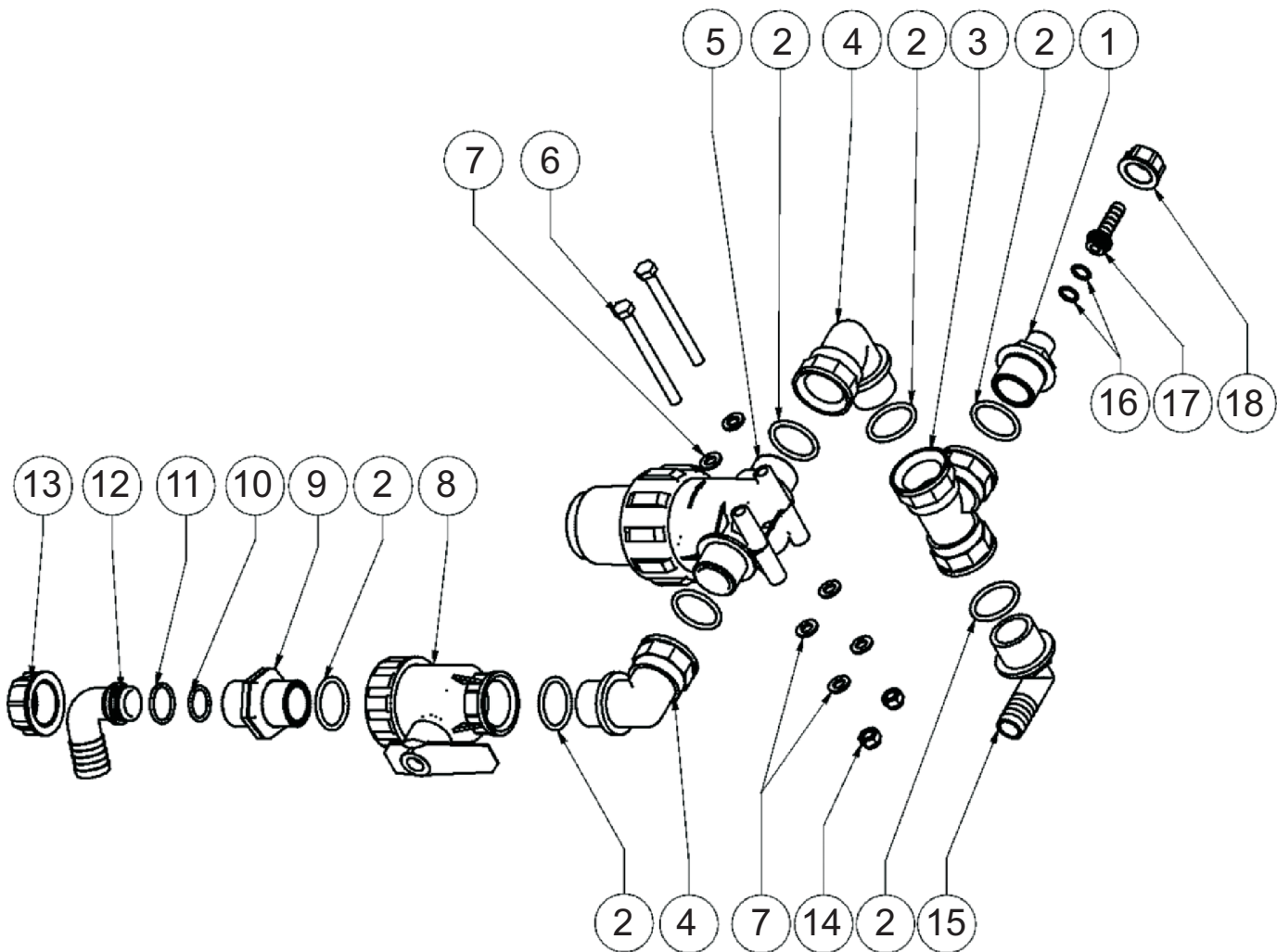
Item#	Part#	Description	Qty
1	VM-000752.000.00	Main tubular frame - FAST	1
2	VM-100272.000.00	Linkage pin - D. 19 mm	1
3	VM-100273.000.00	Circular clip + rubber strap	1
4	VM-100474.000.00	Linkage pin - D. 22-28 mm - L=180 mm	2
5	VM-CP0004.000.00	R-clip - Diam. 4 mm	2
6	VM-001098.000.00	Protection plate - Gearbox	1
7	VM-RP0008.000.00	Washer - 8 ZB	6
8	VM-DA0008.000.00	Nut (self-locking) - M8	7
9	VM-100079.000.00	PTO shield (Black plastic)	1
10	VM-D00008.000.0A	Nut - M8	4
11	VM-D00008.000.0B	Nut - M8 (basso)	3
12	VM-TE0008.025.TF	Bolt - TE M8 x 25 ZB	7
13	VM-RP0008.024.00	Washer - 8 x 24 (stainless)	5
14	VM-001099.000.00	Protective shield (lateral) - FAST	1
15	VM-000091.000.00	Pump support plate	1

VALVES / FILTER / FITTINGS



Item#	Part#	Description	Qty
1	VM-100053.000.00	Plug - Quick attachment - 1-1/4" M	1
2	VM-100052.000.00	Quick attachment - FM adapter x 1-1/4" MPT	1
3	VM-OR0004.162.00	O-Ring - 40.86 x 3.53	4
4	VM-100100.000.00	Ball Valve - 3 way - 1-1/4" FMxFMxFM	1
5	VM-100005.000.00	Reducer - 1" M x 1/4" FM	1
6	VM-100008.000.CH	Filter cartridge - 32 mm - 1-1/4"	1
7	VM-OR0000.132.00	O-Ring 132 - 23.81 x 2.62	2
8	VM-OR0003.100.00	O-Ring 3100 - 25.07 x 2.62	2
9	VM-100038.000.00	Threaded Collar - 1-1/4"	2
10	VM-100031.000.00	Barb fitting D.30 mm - 45 degree	1
11	VM-100035.000.00	Barb fitting D.30 mm - 90 degree (1-1/4")	1
12	VM-100000.000.00	Nipple - 1-1/4" MxM	1
13	VM-RP0008.024.00	Washer - 8 x 24 (stainless)	3
14	VM-TE0008.016.TF	Bolt - TE M8 x 16 (zinc)	3

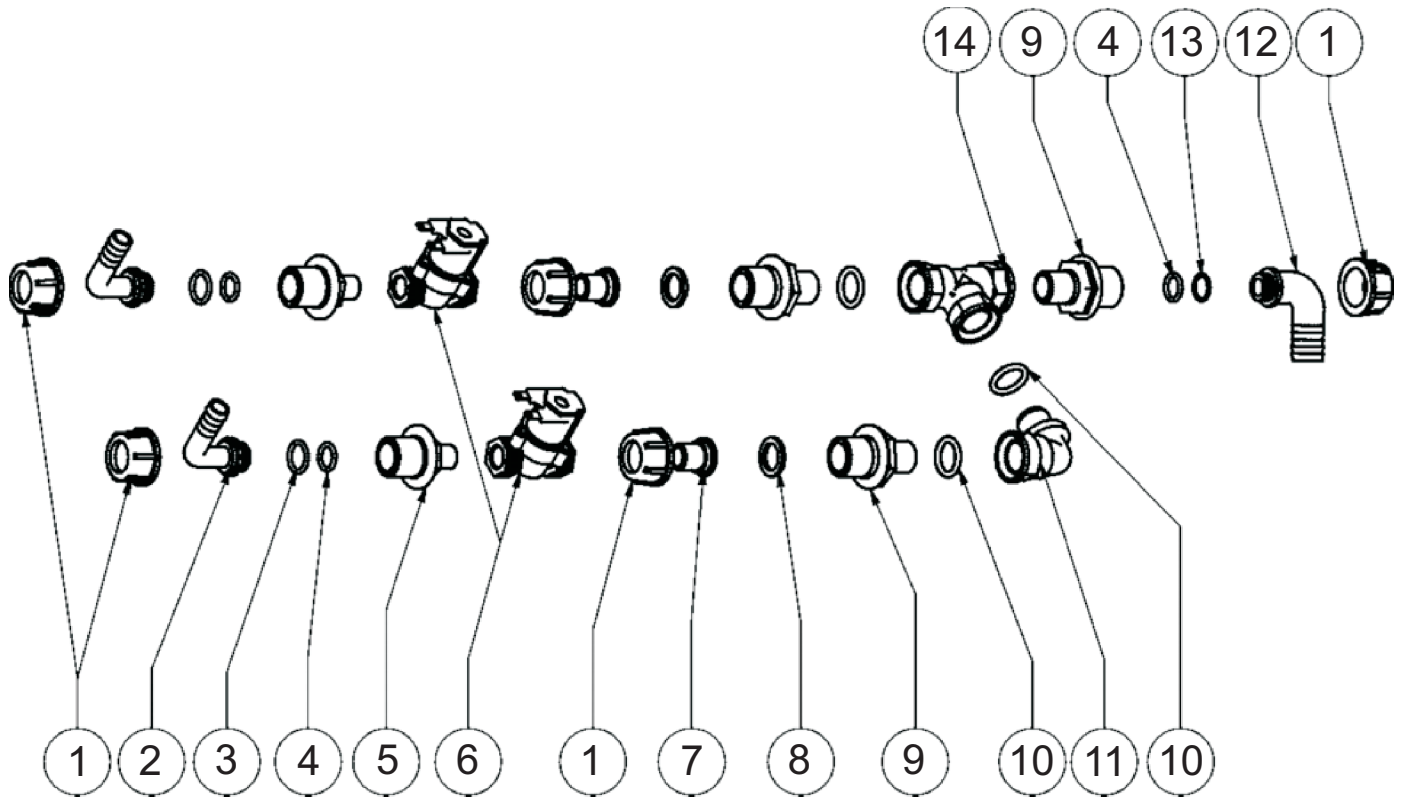
VALVES / FILTER / FITTINGS



Item#	Part#	Description	Qty
1	VM-100121.000.00	Reducer - 1"M x 1/2"M	1
2	VM-OR0004.125.00	O-Ring 4125 - 31.34 x 3.53	7
3	VM-100041.000.00	Tee - 1"F x 1"F x 1"F	1
4	VM-100091.000.00	Street L - 1" M x F	2
5	VM-100009.000.00	Filter assembly - 50 mesh - 1"F x 1"F	1
6	VM-TE0008.090.FP	Bolt - TE M8 x 90 ZB	2
7	VM-RP0008.000.00	Washer - 8 ZB	6
8	VM-100078.000.00	Ball Valve - 2 way - 1" x 1"	1
9	VM-100094.000.00	Nipple - 1" MxM	1

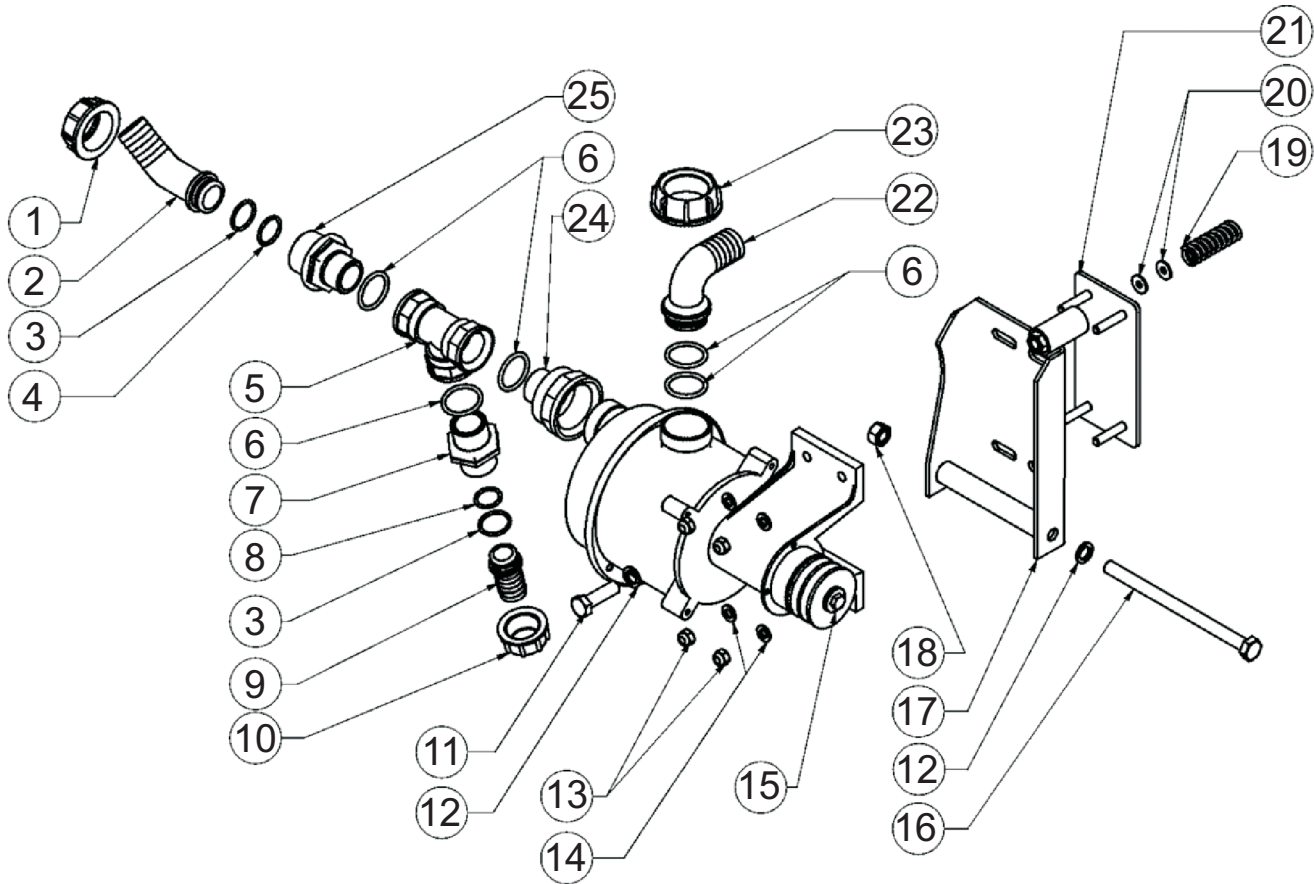
Item#	Part#	Description	Qty
10	VM-OR0003.081.00	O-Ring 3081 - 24.24 x 2.62	1
11	VM-OR0000.132.00	O-Ring 132 - 23.81 x 2.62	1
12	VM-100159.000.00	Barb fitting D.25 mm - 90 degree	1
13	VM-100037.000.00	Threaded Collar - 1"	1
14	VM-DA0008.000.00	Nut (self-locking) - M8	2
15	VM-100427.000.00	Barb fitting D.20 mm x 1" MPT- 90 degree	1
16	VM-OR0002.043.00	O-Ring 2043 - 10.82 x 1.78	2
17	VM-100034.000.00	Barb fitting D.10mm x 1/2M	1
18	VM-100036.000.00	Threaded Collar - 1/2"	1

ELECTROVALVES / FITTINGS



Item#	Part#	Description	Qty
1	VM-100058.000.00	Threaded Collar - 3/4"	5
2	VM-100184.000.00	Barb fitting D.13 mm - 90 degree	2
3	VM-OR0000.121.00	O-Ring 121 - 15.88 x 2.62 EPDM	2
4	VM-OR0000.117.00	O-Ring 117 - 13.10 x 2.62	3
5	VM-100194.000.00	Reducer - 3/4"M x 3/8"M	2
6	VM-100196.000.00	Electro-valve - 3/8"F x 3/8"F - 12V	2
7	VM-100199.000.00	Barbed fitting - 3/8"	2
8	VM-100435.000.00	Flat washer - 24.5 x 17 x 2.5 mm (rubber)	2
9	VM-100193.000.00	Coupling - 1/2"M x 3/4"M	3
10	VM-OR0004.075.00	O-Ring 125 - 40.64 x 3.53 EPDM	3
11	VM-100198.000.00	Street L - 1/2" M x F	1
12	VM-100345.000.00	Barb fitting D.20 mm - 90 degree (3/4")	1
13	VM-OR0002.056.00	O-Ring 2056 - 14 x 1.78	1
14	VM-100090.000.00	Tee - 1/2"F x 1/2"F x 1/2"F	1

CENTRIFUGAL PUMP / FITTINGS

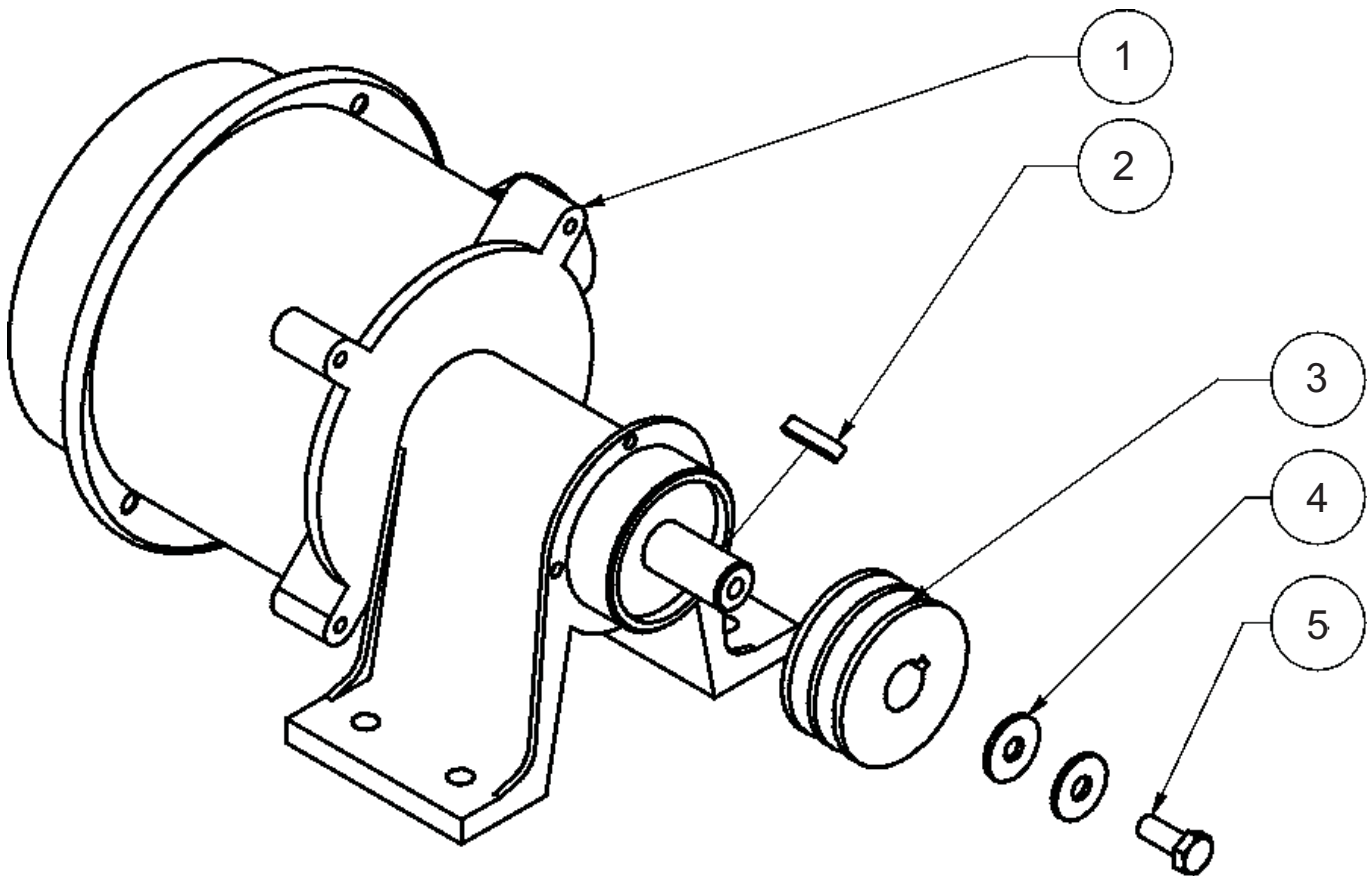


Item#	Part#	Description	Qty
1	VM-100038.000.00	Threaded Collar - 1-1/4"	1
2	VM-100031.000.00	Barb fitting D.30 mm - 45 degree	1
3	VM-OR0003.100.00	O-Ring 3100 - 25.07 x 2.62	2
4	VM-OR0000.132.00	O-Ring 132 - 23.81 x 2.62	1
5	VM-100041.000.00	Tee - 1"F x 1"F x 1"F	1
6	VM-OR0004.125.00	O-Ring 4125 - 31.34 x 3.53	5
7	VM-100094.000.00	Nipple - 1" MxM	1
8	VM-OR0003.081.00	O-Ring 3081 - 24.24 x 2.62	1
9	VM-100158.000.00	Barb fitting D.25 mm (straight)	1
10	VM-100037.000.00	Threaded Collar - 1"	1
11	VM-TE0012.040.TF	Bolt - TE M12 x 40	1
12	VM-RP0012.000.00	Washer - 12	2
13	VM-DAI008.000.00	Nut (self-locking) - M8 - Stainless	4

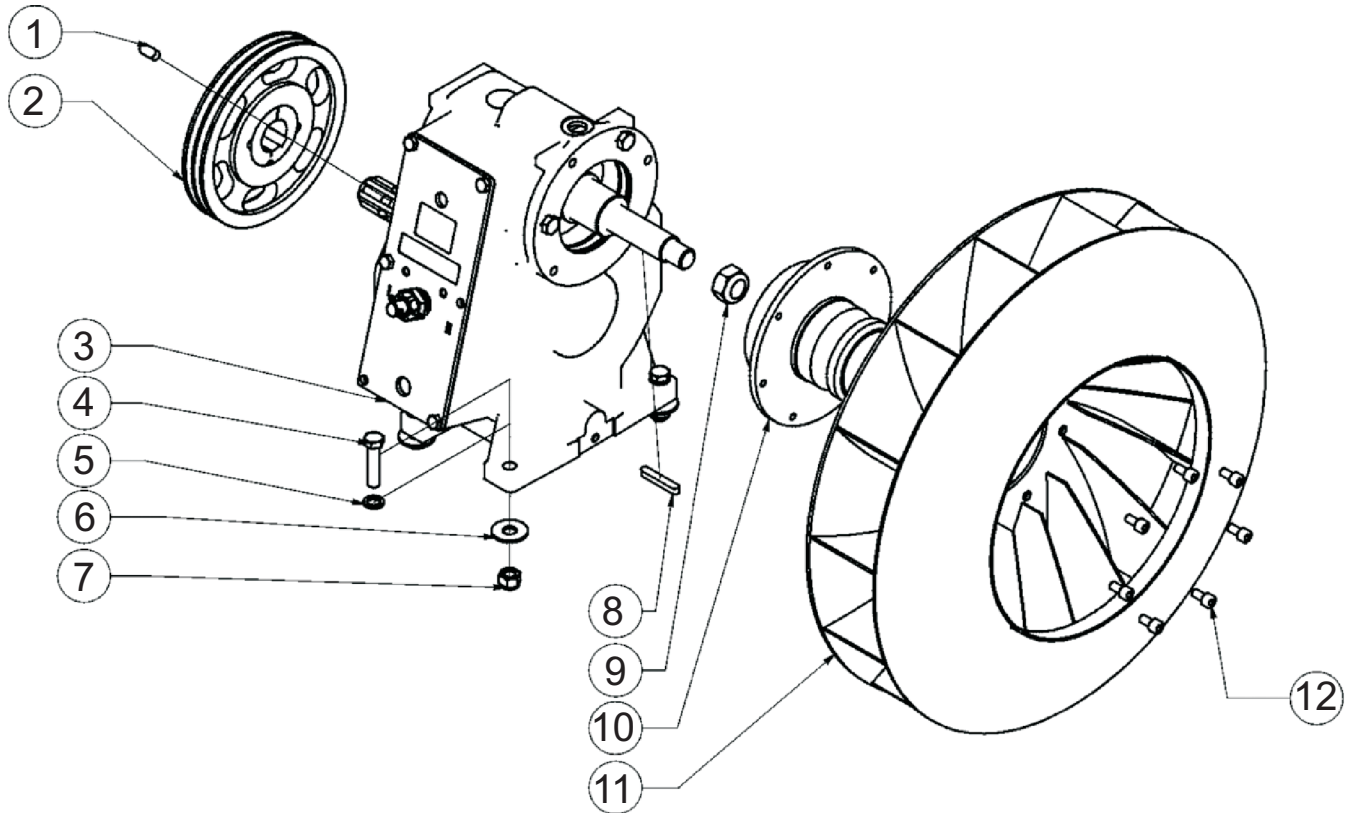
Item#	Part#	Description	Qty
14	VM-RP0008.000.00	Washer - 8 ZB	4
15	VM-100065.000.00	Pump - AL 40 (stainless steel)	1
16	VM-TE0012.180.FP	Bolt - TE M12 x 180 ZB	1
17	VM-001097.000.09	Support plate for pump	1
18	VM-D00012.000.00	Nut - M12	1
19	VM-100147.000.00	Spring for pump - EN10270/3-1.4310	1
20	VM-RPI006.018.00	Washer - 6 x 18 (stainless)	2
21	VM-000860.000.00	Support plate - Centrifugal pump	1
22	VM-100181.000.00	Barb fitting D.30 mm - 90 degree (1-1/2")	1
23	VM-100182.000.00	Threaded Collar - 1-1/2"	1
24	VM-100180.000.00	Nipple - 1"M x 1"F	1
25	VM-100095.000.00	Reducer - 1"M x 1-1/4"M	1

CENTRIFUGAL PUMP

Item#	Part#	Description	Qty
1	VM-100065.000.00	Pump - AL 40 (stainless steel)	1
2	VM-CH0005.005.25	Shaft Key - 5 x 5 x 25	1
3	VM-100364.000.00	Pulley - D = 60 mm - pump side	1
4	VM-RP1008.024.00	Washer - 8 x 24 (stainless)	2
5	VM-TE1008.020.TF	Bolt - TE M8 x 20 (stainless)	1

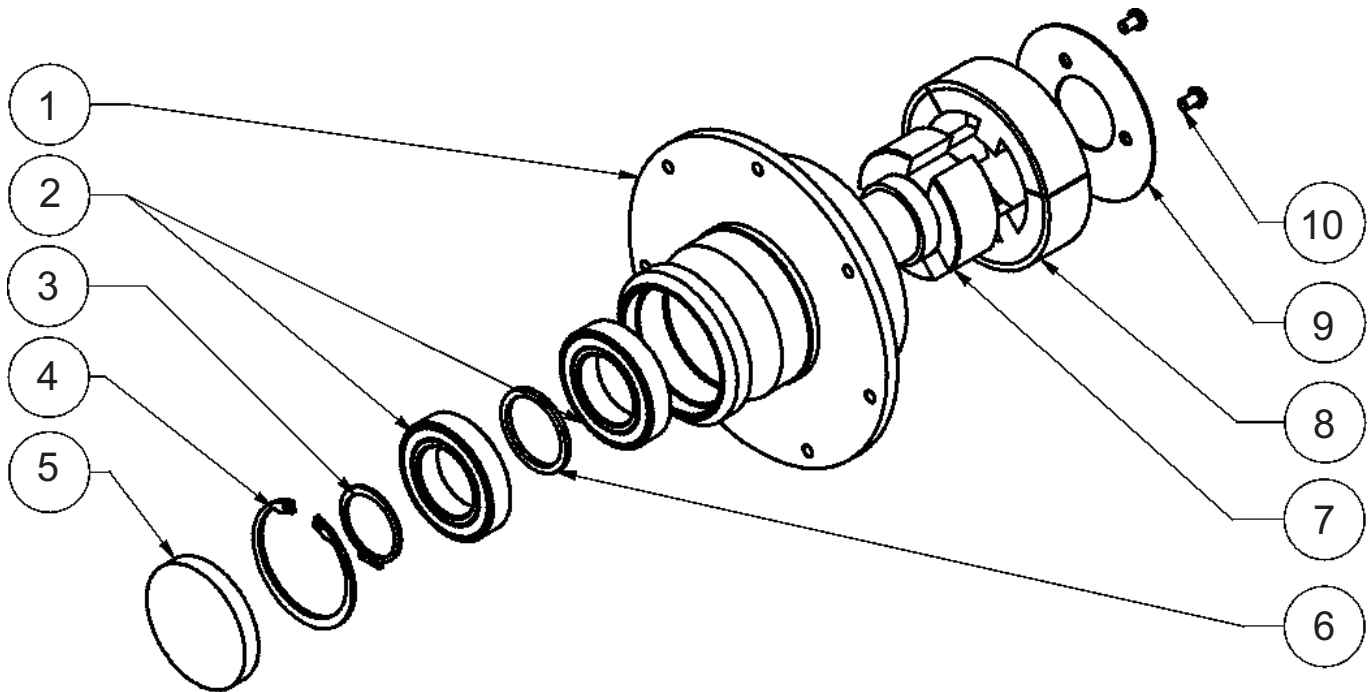


GEARBOX & FAN



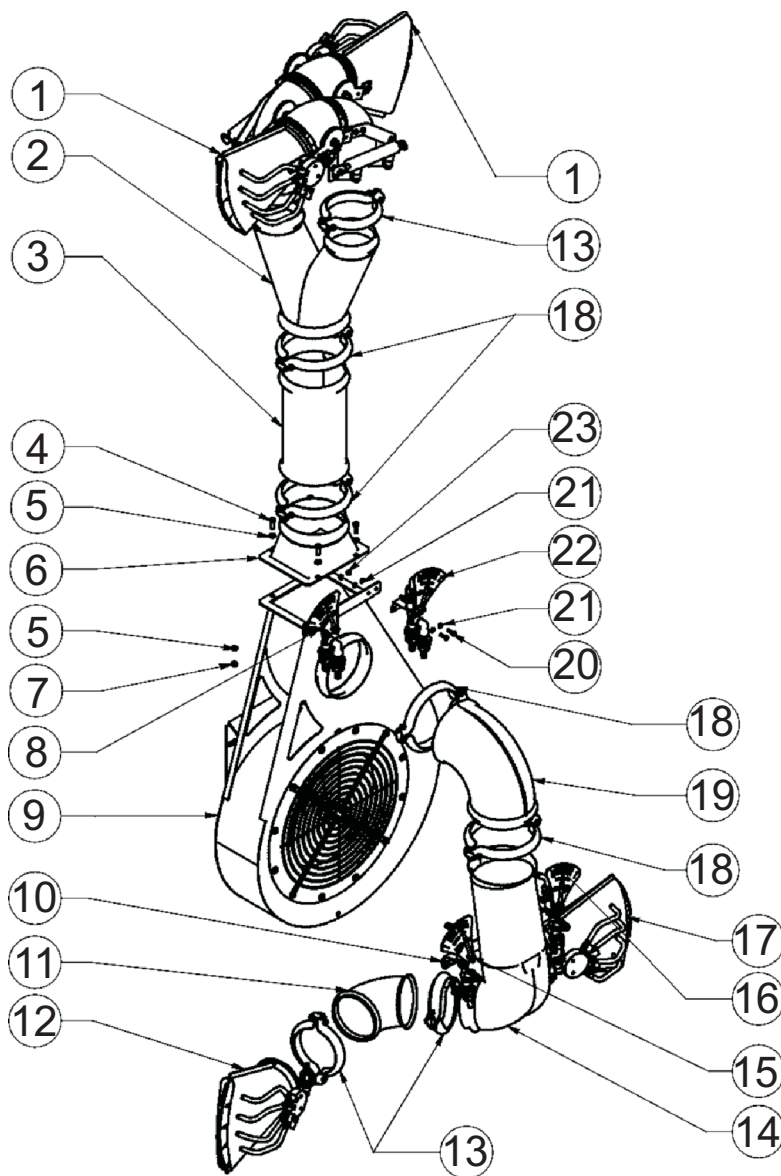
Item#	Part#	Description	Qty
1	VM-CH0010.008.20	Shaft Key - 10 x 8 x 20	1
2	VM-100056.000.00	Pulley - D = 200 mm - complete	1
3	VM-100558.000.00	Gearbox (complete assembly)	1
4	VM-TE0012.050.TF	Bolt - TE M12 x 50 ZB	4
5	VM-RP0012.000.00	Washer - 12	4
6	VM-RP0012.036.00	Washer - 12 x 36 mm SP.2.5	4
7	VM-DA0012.000.00	Nut (self-locking) - M12 (alto)	4
8	VM-CH0008.007.50	Shaft Key - 8 x 7 x 50	1
9	VM-DA0022.001.50	Nut (self-locking) - M22 x 1.5 (basso)	1
10	VM-000753.000.00	Clutch assembly (free rotation) for fan - Mod. Power 50	1
11	VM-000005.000.00	Fan blade assembly - Diam. 50 cm	1
12	VM-TCE008.016.00	Bolt - TCEI M8 x 16	7

FAN CLUTCH ASSEMBLY



Item#	Part#	Description	Qty
1	VM-000041.000.00	Clutch housing	1
2	VM-K06008.2RS.00	Bearing - 6008 2RS	2
3	VM-SE0040.000.00	Snap ring (External) D. 40	1
4	VM-SI0068.000.00	Snap ring (External) D. 68	1
5	VM-PO0072.000.10	Dust cap for fan clutch - RCA 72x10	1
6	VM-000040.000.00	Spacing collar for bearings	1
7	VM-000065.003.00	Clutch joint hub (internal)	1
8	VM-000065.000.00	Clutch joint hub (external) with springs and spline	1
9	VM-000041.100.00	Support flange for clutch assembly GRZ	1
10	VM-TBEI06.010.00	Bolt - TBEI M6 x 10 ISO	3

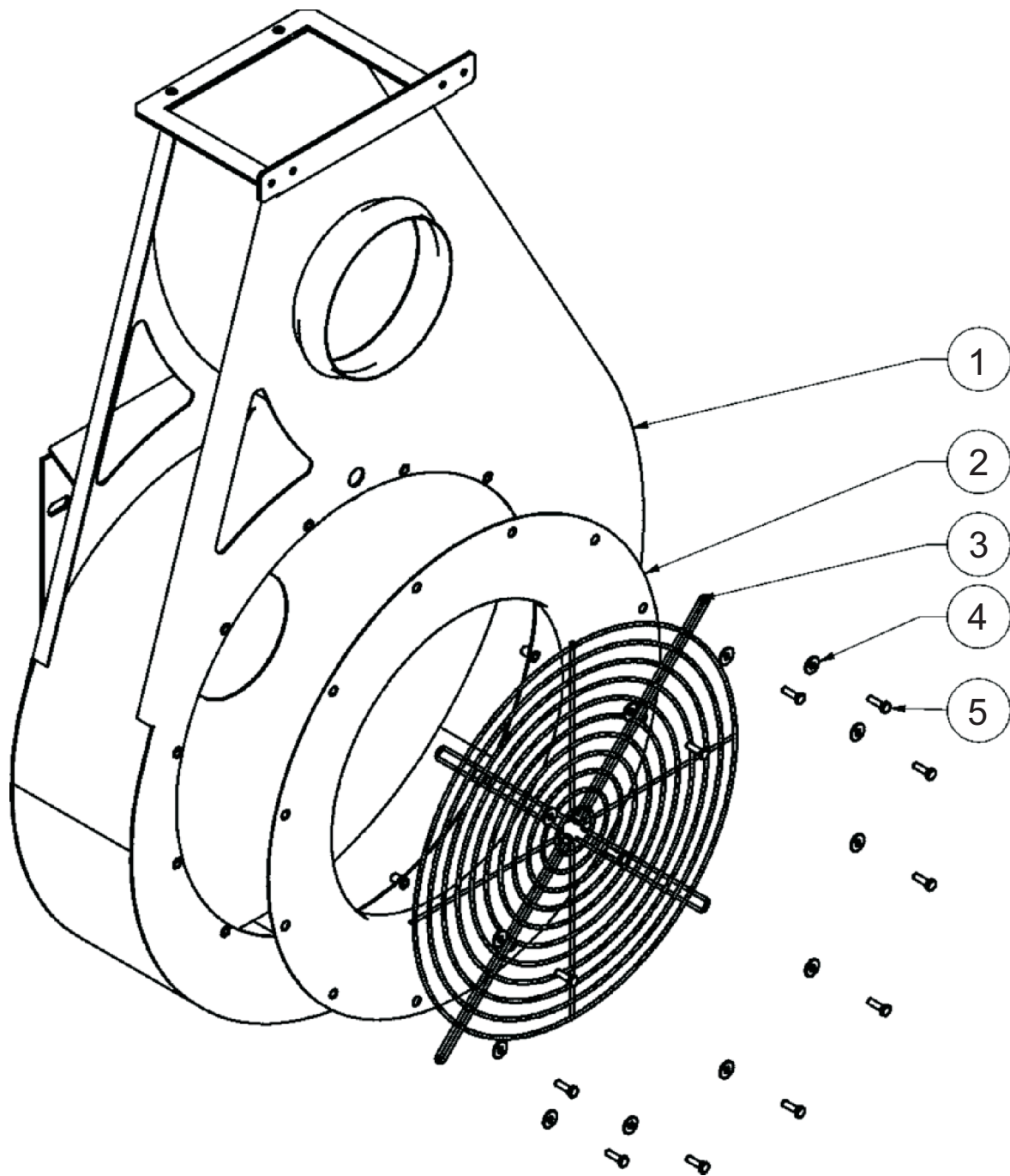
FAN HOUSING & TOWER



Item#	Part#	Description	Qty
1	(see page 15)	Upper fan assembly (Right/Left) D. 140 mm	2
2	VM-000476.000.00	Y-diverter tube - 180 x 140 x 140 mm	1
3	VM-000925.000.00	Extension tube - 180 mm - L=145 mm	1
4	VM-TEI008.025.TF	Bolt - TE M8 x 25 (stainless)	4
5	VM-RPI008.000.00	Washer - 8 (stainless)	6
6	VM-000929.000.00	Flange/collar - 250x200 mm - D. 180 mm H=130 mm	1
7	VM-D00008.000.OT	Nut - M8 (brass)	2
8	(see page 18)	Upper regulator assembly (Left)	1
9	(see page 13)	Fan housing assembly - 50	1
10	VM-000917.000.00	Support strap for upper dosage meters	1
11	VM-000021.000.00	Elbow-Tube - Diam 140 mm - 75 degree	2
12	(see page 14)	Lower fan assembly (Left) - Fast 50	1

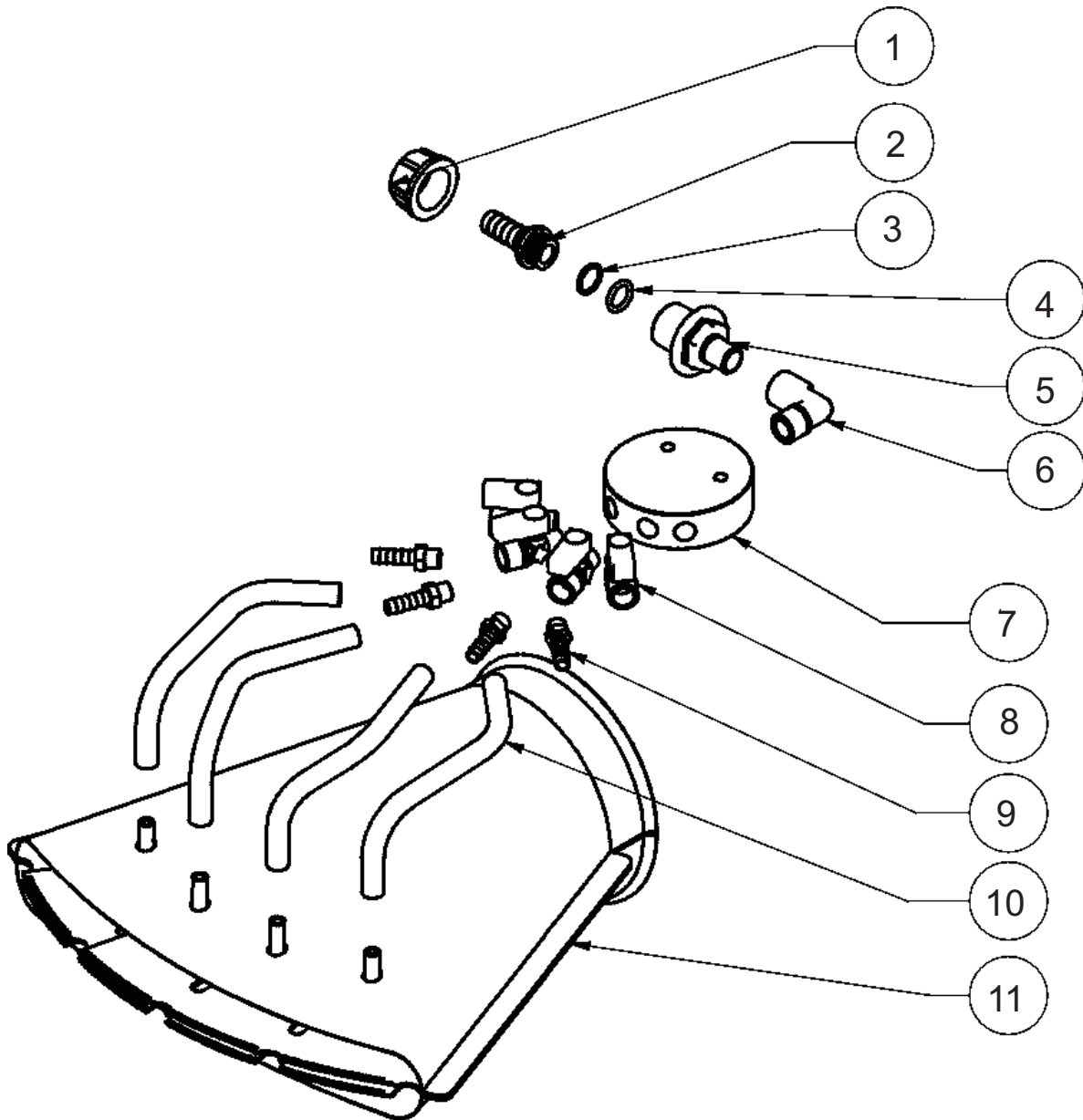
Item#	Part#	Description	Qty
13	VM-000025.000.00	Collar/clamp - Diam 140 mm + bolt/nut	6
14	VM-000910.000.00	Y-Tube (curved) - Diam. 140 mm	1
15	(see Page 17)	Lower regulator assembly (Left)	1
16	(see Page 17)	Lower regulator assembly (Right)	1
17	(see Page 14)	Lower fan assembly (Left) - Fast 50	1
18	VM-000024.000.00	Collar/clamp - Diam 180 mm + bolt/nut	4
19	VM-000890.000.00	Elbow-Tube - Diam 180 mm - Male x Female	1
20	VM-TEI006.020.TF	Bolt - TE M6 x 20 (stainless)	8
21	VM-RPI006.000.00	Washer - 6 (stainless)	22
22	(see Page 18)	Upper regulator assembly (Left)	1
23	VM-DAI006.000.00	Nut (self-locking) - M6 Stainless	10

FAN HOUSING & GRILLE



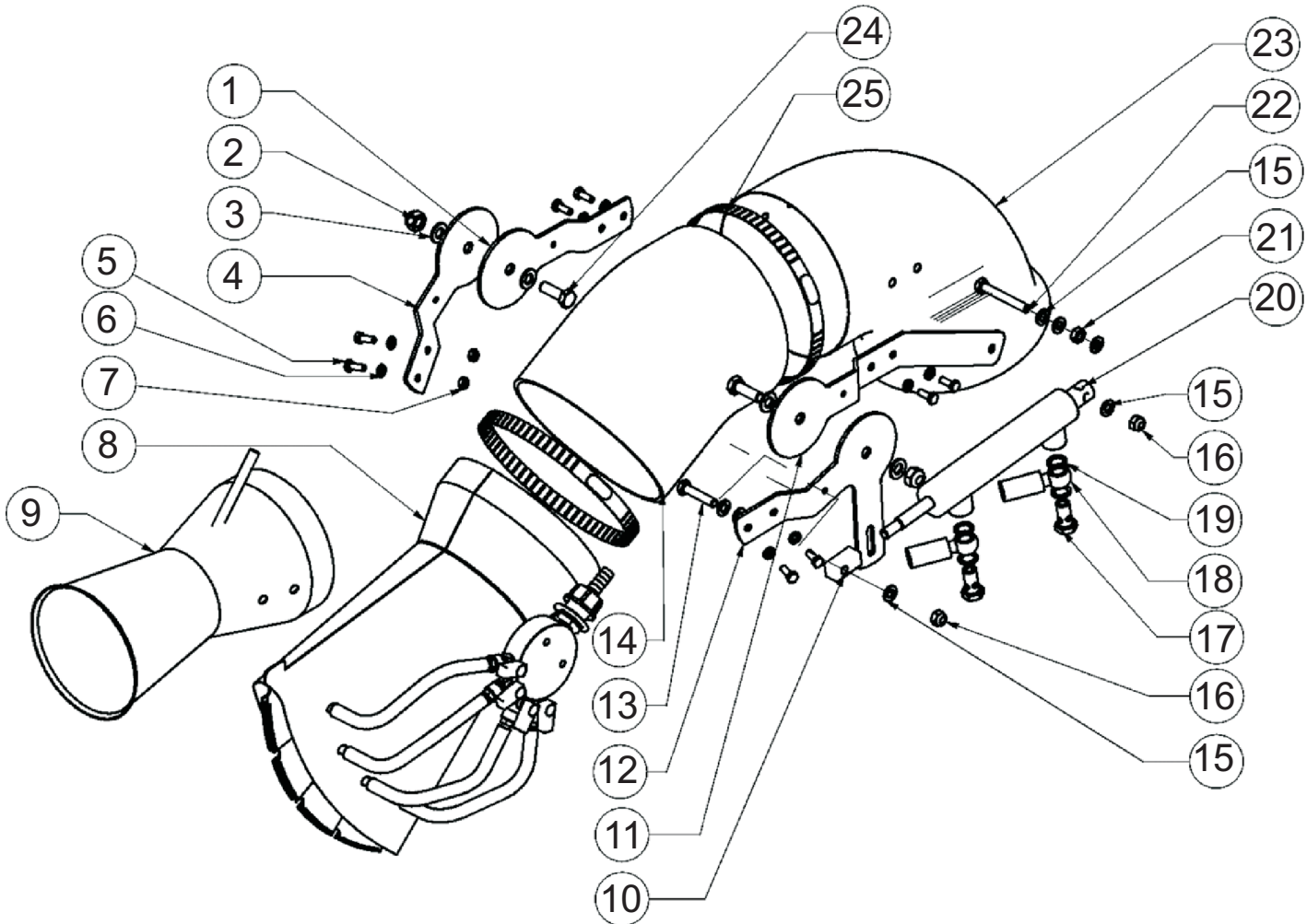
Item#	Part#	Description	Qty
1	VM-000205.000.00	Fan housing assembly - Power 500	1
2	VM-000924.000.00	Protective collar - for fan access - 50 cm fan	1
3	VM-100467.000.00	Fan grill / cover - 50 cm fan	1
4	VM-RPI006.018.00	Washer - 6 x 18 (stainless)	12
5	VM-TEI006.020.TF	Bolt - TE M6 x 20 (stainless)	12

LOWER FAN DIFFUSER ASSEMBLY



Item#	Part#	Description	Qty
1	VM-100058.000.00	Threaded Collar - 3/4"	1
2	VM-100286.000.00	Barb fitting D.13 mm (straight)	1
3	VM-OR0002.056.00	O-Ring 2056 - 14 x 1.78	1
4	VM-OR0000.117.00	O-Ring 117 - 13.10 x 2.62	1
5	VM-100194.000.00	Reducer - 3/4"M x 3/8"M	1
6	VM-100269.000.00	Elbow - 3/8" M x F	1
7	VM-200042.000.00	Distribution block - spray valves (round)	1
8	VM-100271.000.02	Ball Valve - 1/4" M x 1/4" FM (GHILUX)	4
9	VM-100518.000.00	Barb fitting D.10mm x 1/4M	4
10	VM-100069.000.00	Black tubing - Nr. 20 - 8 x 13 mm	4
11	VM-000493.000.00	Fan spray diffuser (4 nozzle) - Stainless	1

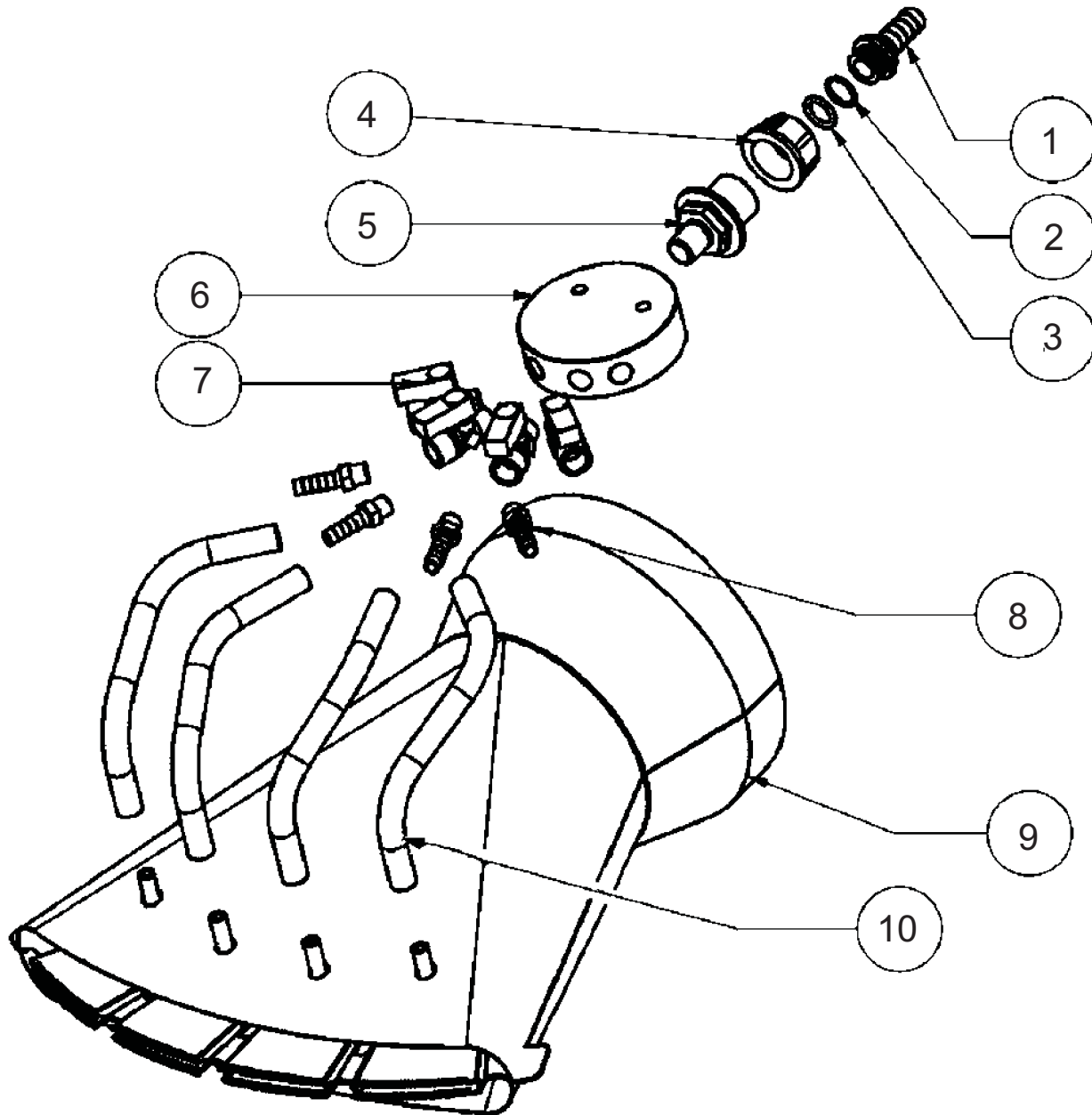
COMPLETE UPPER FAN ASSEMBLY (L/R)



Item#	Part#	Description	Qty
1	VM-000914.000.00	Support strap for pivot point	1
2	VM-DA0010.000.00	Nut (self-locking) - M10	2
3	VM-RPI010.000.00	Washer - 10 (stainless)	4
4	VM-000915.000.00	Support strap for pivot point	1
5	VM-TEI006.016.TF	Bolt - TE M6 x 16 (stainless)	8
6	VM-RPI006.000.00	Washer - 6 (stainless)	8
7	VM-D00006.000.00	Nut - M6 ZB	2
8	(see Page 14)	Upper fan assembly (Right/Left)	1
9	VM-001096.000.09	Spray cannon (complete assembly) - D = 150 mm	1
10	VM-000918.000.00	Piston support block - M8 mm	1
11	VM-000912.000.00	Support strap for pivot point	1
12	VM-000913.000.00	Support strap for pivot point	1
13	VM-TEI008.040.TF	Bolt - TE M8 x 40 (stainless)	1

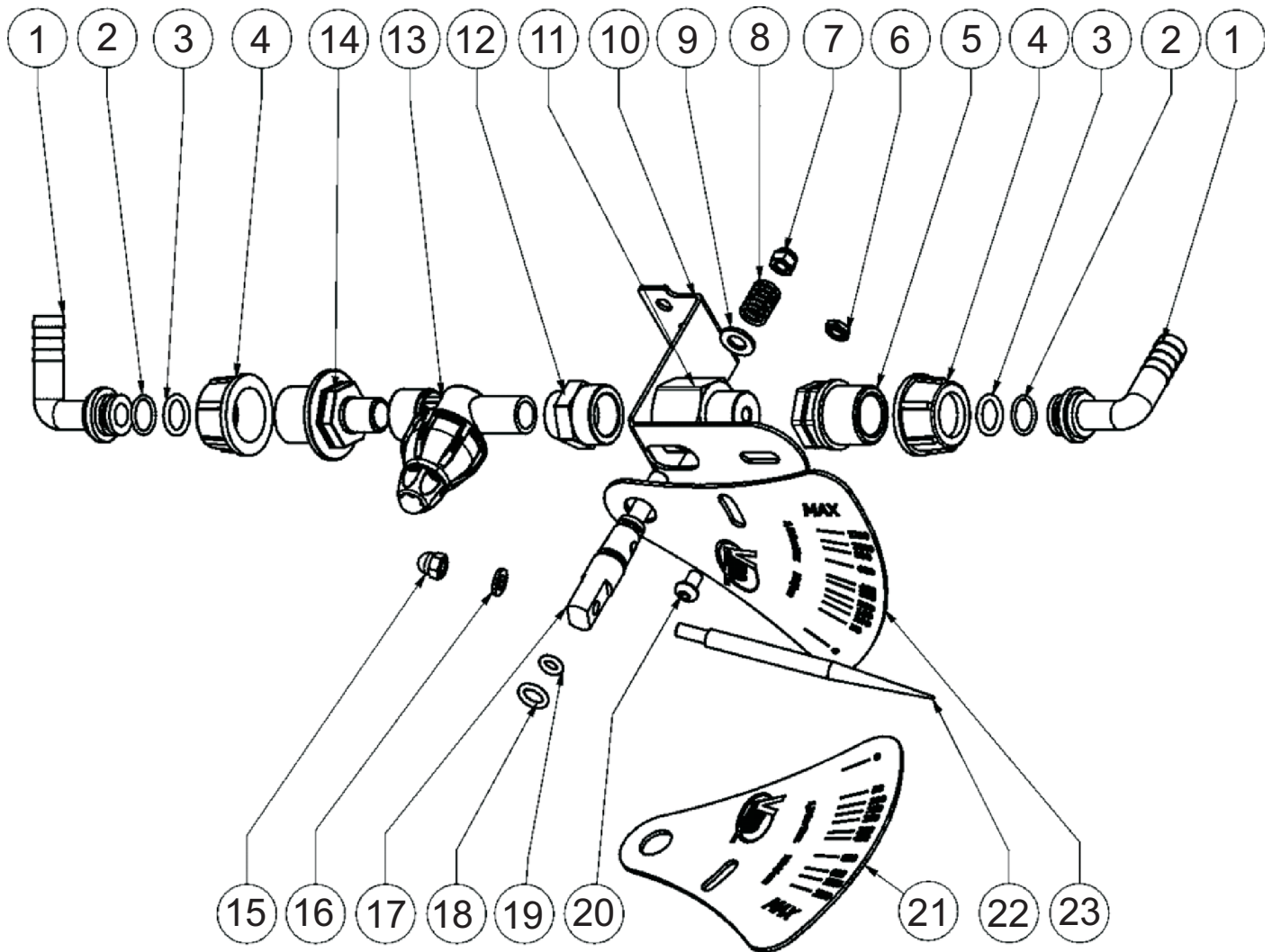
Item#	Part#	Description	Qty
14	VM-100223.000.11	Curved extension - D. 140 mm (Power 50)	1
15	VM-RPI008.000.00	Washer - 8 (stainless)	7
16	VM-DA0008.000.00	Nut (self-locking) - M8	2
17	VM-100569.000.00	Banjo bolt - 1/4" - perforated	2
18	VM-100325.000.00	Hydraulic hose - 1/4" R1 - L = 2500 mm	2
19	VM-100580.000.08	Copper Washer - 1/4"	4
20	VM-100314.000.00	Hydraulic piston (dual action) 35-12-100	1
21	VM-D00008.000.0A	Nut - M8	2
22	VM-TEI008.060.TF	Bolt - TE M8 x 60 (stainless)	1
23	VM-000926.000.00	Elbow-Tube - Diam 140 mm - 75 degree (PW 50)	1
24	VM-TEI010.030.TF	Bolt - TE M10 x 30 (stainless)	2
25	VM-F0140.160.00	Hose clamp W4 - 12 x 140-160 mm (stainless)	1

UPPER FAN DIFFUSER ASSEMBLY



Item#	Part#	Description	Qty
1	VM-100286.000.00	Barb fitting D.13 mm (straight)	1
2	VM-OR0002.056.00	O-Ring 2056 - 14 x 1.78	1
3	VM-OR0000.117.00	O-Ring 117 - 13.10 x 2.62	1
4	VM-100058.000.00	Threaded Collar - 3/4"	1
5	VM-100194.000.00	Reducer - 3/4"M x 3/8"M	1
6	VM-200042.000.00	Distribution block - spray valves (round)	1
7	VM-100271.000.02	Ball Valve - 1/4" M x 1/4" FM (GHILUX)	4
8	VM-100518.000.00	Barb fitting D.10mm x 1/4M	4
9	VM-000927.000.00	Fan spray diffuser (4 nozzle) - D. 140 mm - PW50	1
10	VM-100069.000.00	Black tubing - Nr. 20 - 8 x 13 mm	4

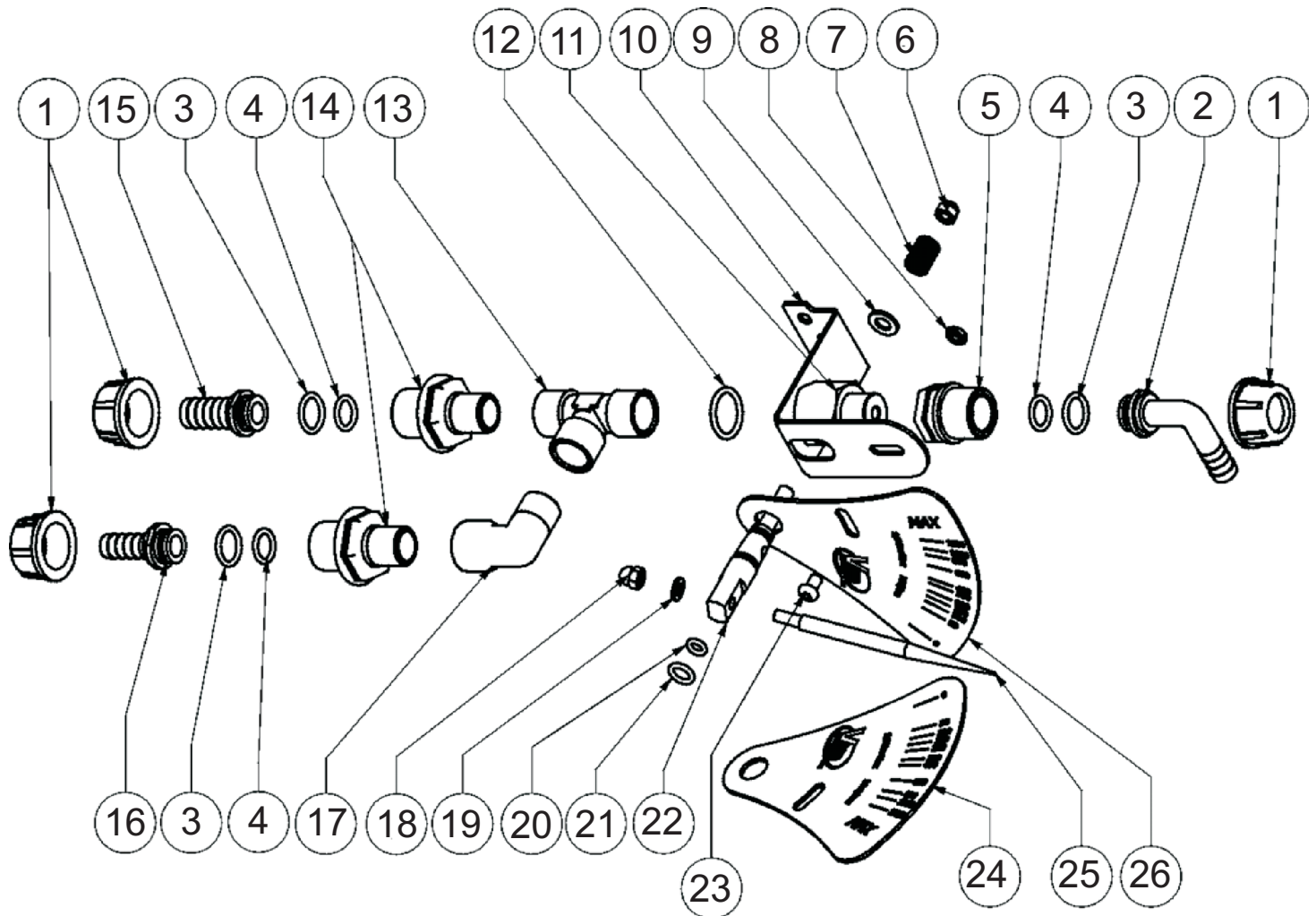
LOWER FLOW REGULATOR ASSEMBLY (L/R)



Item#	Part#	Description	Qty
1	VM-100184.000.00	Barb fitting D.13 mm - 90 degree	2
2	VM-OR0002.056.00	O-Ring 2056 - 14 x 1.78	2
3	VM-OR0000.117.00	O-Ring 117 - 13.10 x 2.62	2
4	VM-100058.000.00	Threaded Collar - 3/4"	2
5	VM-100002.000.00	Reducer - 3/4"M x 1/2"FM	1
6	VM-D00006.000.0B	Nut - M6 Stainless (basso)	1
7	VM-DAI006.000.00	Nut (self-locking) - M6 Stainless	1
8	VM-100603.000.00	Spring - D 1.5mm - Ext 11 mm - L=20 mm	1
9	VM-RPI008.000.00	Washer - 8 (stainless)	1
10	VM-000921.000.00	Support bracket for flow meter	1
11	VM-200051.000.00	Flow meter main body assembly - Hex 30 x 53	1
12	VM-100604.000.00	Reducer - 3/8" x 1/2" F x F	1

Item#	Part#	Description	Qty
13	VM-100452.000.00	Check valve with On/Off valve - 3/8" M x F	1
14	VM-100194.000.00	Reducer - 3/4"M x 3/8"M	1
15	VM-D00006.000.IC	Cap Nut - M6 (stainless)	1
16	VM-RPI006.000.00	Washer - 6 (stainless)	1
17	VM-200052.000.00	Flow meter control shaft	1
18	VM-OR0003.037.00	O-Ring 111 - 9.19 x 2.62	1
19	VM-OR0003.024.00	O-Ring - 6.02 x 2.62 NBR	1
20	VM-TBEI06.010.00	Bolt - TBEI M6 x 10 ISO	1
21	VM-100602.05X.00	Flow meter graduated plate (stainless) - LEFT	1
22	VM-200043.000.00	Needle	1
23	VM-100602.0DX.00	Flow meter graduated plate (stainless) - RIGHT	1

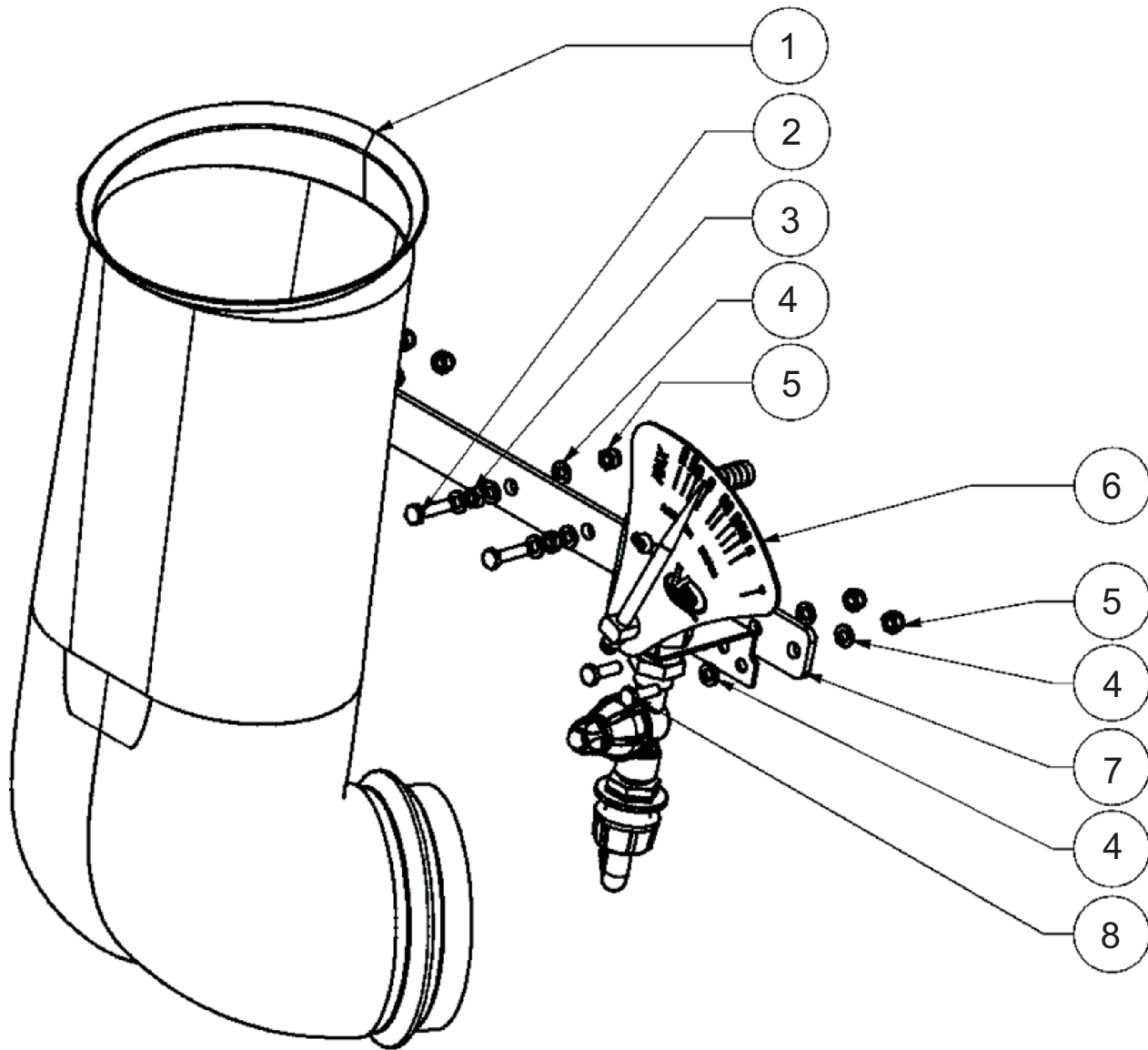
UPPER FLOW REGULATOR ASSEMBLY (L/R)



Item#	Part#	Description	Qty
1	VM-100058.000.00	Threaded Collar - 3/4"	3
2	VM-100184.000.00	Barb fitting D.13 mm - 90 degree	1
3	VM-OR0000.121.00	O-Ring 121 - 15.88 x 2.62 EPDM	3
4	VM-OR0000.117.00	O-Ring 117 - 13.10 x 2.62	3
5	VM-100002.000.00	Reducer - 3/4"M x 1/2"FM	1
6	VM-DAI006.000.00	Nut (self-locking) - M6 Stainless	1
7	VM-100603.000.00	Spring - D 1.5mm - Ext 11 mm - L=20 mm	1
8	VM-D00006.000.0B	Nut - M6 Stainless (basso)	1
9	VM-RPI008.000.00	Washer - 8 (stainless)	1
10	VM-000921.000.00	Support bracket for flow meter	1
11	VM-200051.000.00	Flow meter main body assembly - Hex 30 x 53	1
12	VM-100672.000.00	Copper Washer - 26 x 21 x 2.8 mm	1
13	VM-100359.000.00	Tee - 1/2"F x 1/2"F x 1/2"F	1

Item#	Part#	Description	Qty
14	VM-100193.000.00	Coupling - 1/2"M x 3/4"M	2
15	VM-100343.000.00	Barb fitting D.15 mm (straight)	1
16	VM-100286.000.00	Barb fitting D.13 mm (straight)	1
17	VM-100190.000.00	Elbow - 1/2" M x F	1
18	VM-D00006.000.IC	Cap Nut - M6 (stainless)	1
19	VM-RPI006.000.00	Washer - 6 (stainless)	1
20	VM-OR0003.024.00	O-Ring - 6.02 x 2.62 NBR	1
21	VM-OR0003.037.00	O-Ring 111 - 9.19 x 2.62	1
22	VM-200052.000.00	Flow meter control shaft	1
23	VM-TBEI06.010.00	Bolt - TBEI M6 x 10 ISO	1
24	VM-100602.0SX.00	Flow meter graduated plate (stainless) - LEFT	1
25	VM-200043.000.00	Needle	1
26	VM-100602.0DX.00	Flow meter graduated plate (stainless) - RIGHT	1

FLOW REGULATOR SUPPORT



Item#	Part#	Description	Qty
1	VM-000910.000.00	Y-Tube (curved) - Diam. 140 mm	1
2	VM-TEI006.025.TF	Bolt - TE M6 x 25 (stainless)	2
3	VM-D00006.000.OT	Nut - M6 (brass)	2
4	VM-RPI006.000.00	Washer - 6 (stainless)	14
5	VM-DAI006.000.00	Nut (self-locking) - M6 Stainless	6
6	----	Flow meter assembly (see Page 17)	1
7	VM-000917.000.00	Support strap for upper dosage meters	1
8	VM-TEI006.020.TF	Bolt - TE M6 x 20 (stainless)	4



For Questions or Technical Assistance Contact:

MG Equipment Co.

PO Box 655
Vineburg, CA 95487
Tel: (707) 996-2605
Mobile: (510) 813-2046
mgequipment@gmail.com