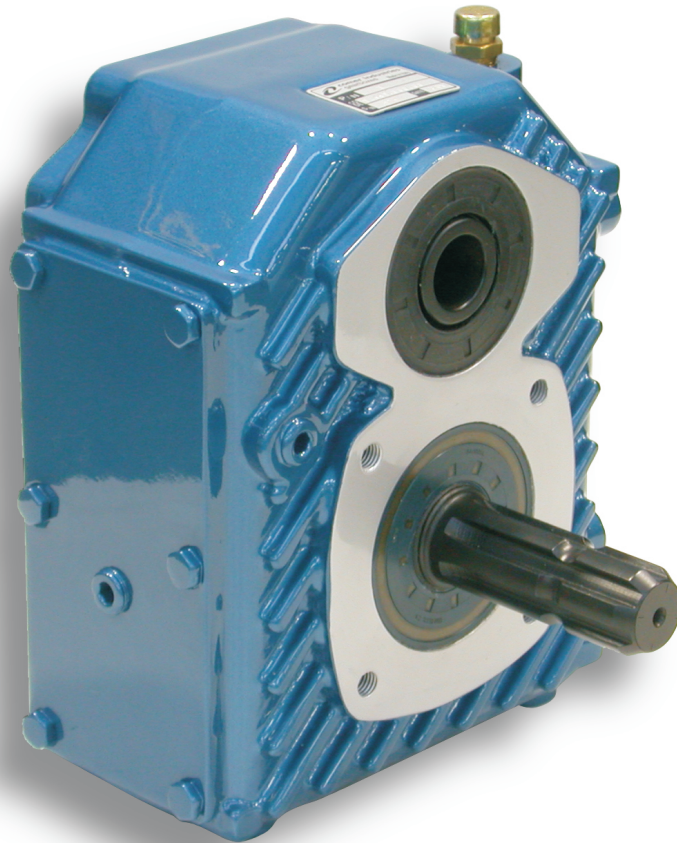




comer industries

REPLACEMENT PARTS CATALOG



COMER Gearbox Series D-761-A



EQUIPMENT COMPANY
Specialized Equipment for Agriculture



COMER Gearboxes

Parts Catalog

Series D-761-A

MG Equipment Company specializes in unique tractor implements designed specifically for vineyards and orchards.

This catalog is designed to detail all the parts and components for COMER Gearboxes which are installed onto VMA Sprayers. It is divided into sections for each part of the gearbox and includes exploded diagrams and a detailed parts list.

To ensure a long life of reliable and trouble-free service for your pump, use only genuine COMER Gearboxes replacement parts.

It is our goal to meet or exceed the expectations of our customers and to offer unsurpassed service and parts support. We partner with each of our manufacturers to provide the best possible after-sales-support.

We thank you for your valued business. We remain at your complete disposal for any information you require regarding any of our products.

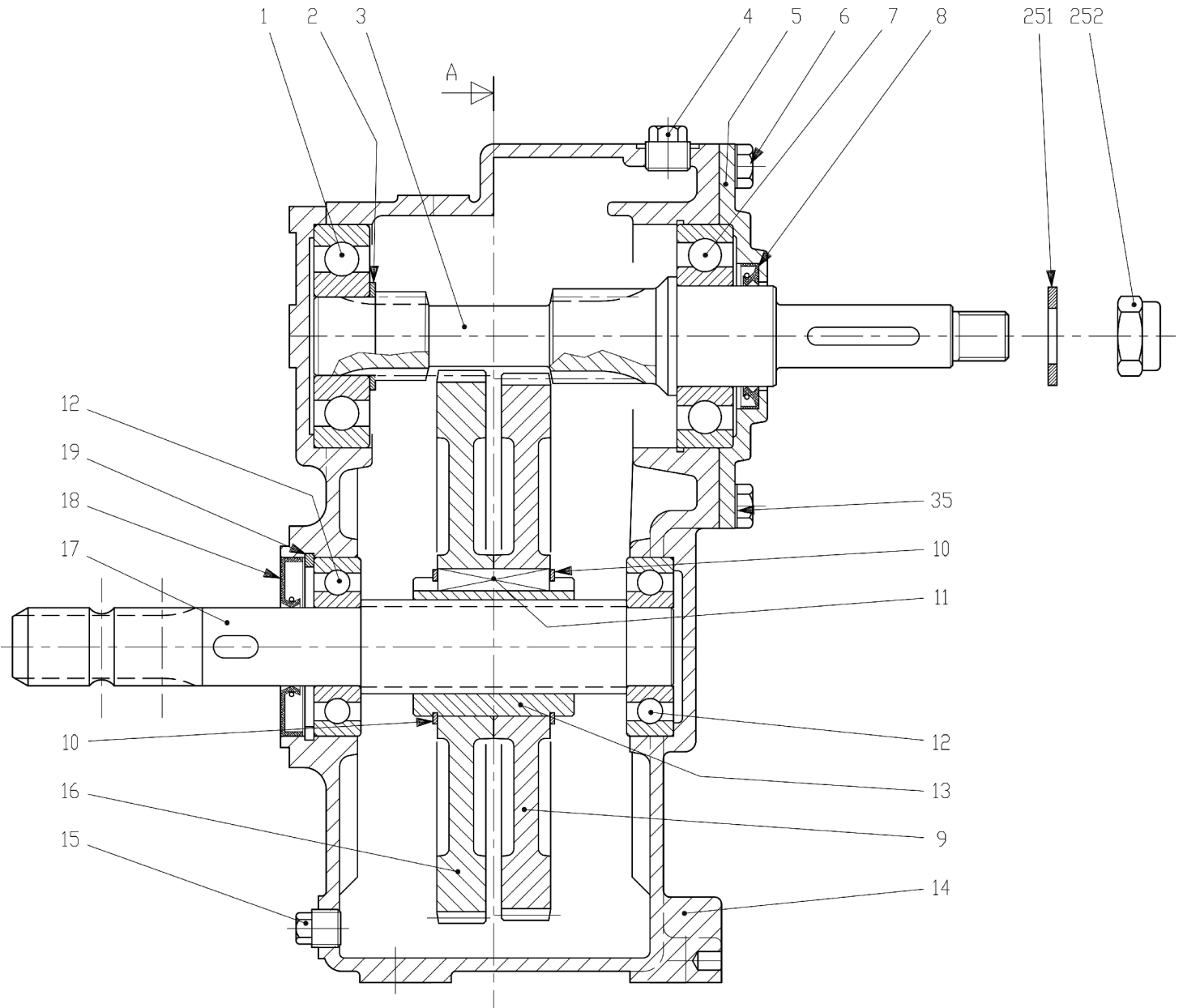
For Replacement Parts Sales and Information contact:

MG Equipment Co.

PO Box 655 Vineburg, CA 95487
mgequipment@gmail.com

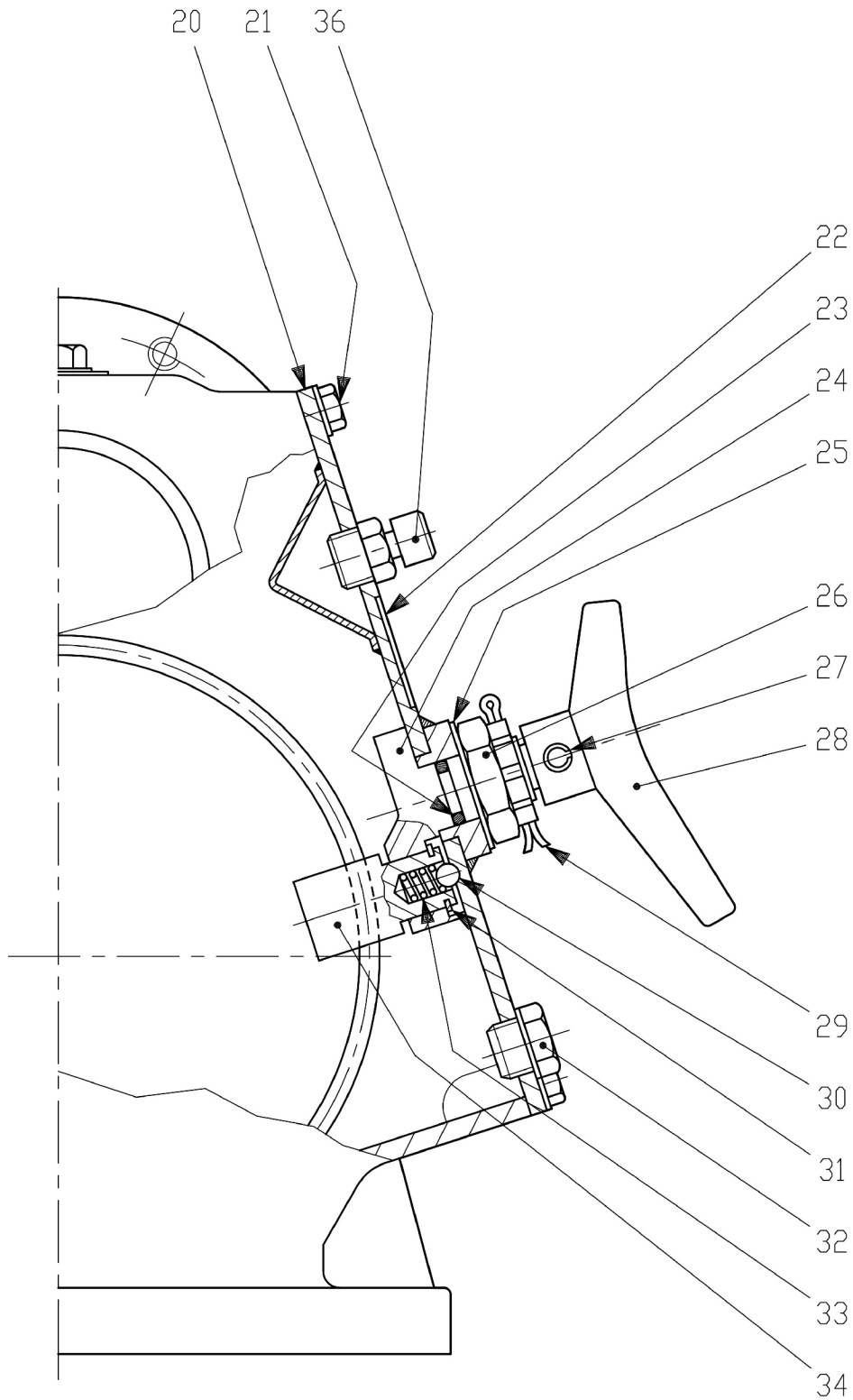
Tel: (707) 996-2605
Fax: (707) 996-3405
Mobile: (510) 813-2046

Series: D-761-A



See Page 3 for a complete list of parts

Series: D-761-A



See Page 3 for a complete list of parts

Series: D-761-A

Pos.	Part#	Description	Qty
1	VM-CG-8.0.1.00956	Bearing 6407	1
2	VM-CG-0.259.7525.00	Spacing washer - 3 x 48.0 x 2.5	1
3	VM-CG-0.761.6304.00	Pinion shaft	1
4	VM-CG-8.6.5.00203	Plug - hex head - 1/2" GAS	1
5	VM-CG-0.721.1300.00	Coverplate - Lower	1
6	VM-CG-8.1.1.00501	Bolt - M10 x 22 mm	6
7	VM-CG-8.0.1.01079	Bearing 6309	1
8	VM-CG-8.7.3.00490	Oil seal - 45 x 65 x 8	1
9	VM-CG-0.761.5101.00	Gear - Z=89 M2.5 B=22 DX	1
10	VM-CG-8.5.1.00932	Ring - ALB 62	2
11	VM-CG-8.4.1.02623	Shaft key - 16 x 10 x 50	1
12	VM-CG-8.0.1.00049	Bearing 6307	2
13	VM-CG-0.761.7100.00	Sliding sleeve	1
14	VM-CG-0.761.0300.00	Gearbox housing	1
15	VM-CG-8.6.5.00006	Plug - hex head - 3/8" GAS	1
16	VM-CG-0.761.5100.00	Gear - Z=90 M2.5 B=22 DX	1
17	VM-CG-0.761.2001.00	PTO spline-groove shaft - 1-3/8"	1
18	VM-CG-8.7.3.00081	Oil seal - 35 x 80 x 10	1
19	VM-CG-8.5.2.01370	Snap ring - I. 80 H=4	1
20	VM-CG-2.761.1301.00	Gearbox coverplate	1
21	VM-CG-8.1.1.00343	Bolt - M8 x 14 mm	6
22	VM-CG-0.721.7008.00	ID plate	1
23	VM-CG-8.7.6.00191	O-Ring - 3062	1
24	VM-CG-0.721.7010.00	Gear shifter handle	1
25	VM-CG-8.5.5.01316	Spring	1
26	VM-CG-8.2.2.00997	Nut - M20 x 1.5	1
27	VM-CG-8.4.5.00934	Roll pin - 5 x 24 mm	1
28	VM-CG-1.721.7002.00	Gear shifter handle	1
29	VM-CG-8.4.7.00760	Cotter pin - B4 x 45 mm	1
30	VM-CG-8.5.9.00166	Ball bearing	1
31	VM-CG-8.5.3.00935	Ring SW 18	1
32	VM-CG-8.6.4.00272	Sight glass SLNT 12	1
33	VM-CG-0.721.7101.00	Spring	1
34	VM-CG-0.721.7001.00	Shifting pin	1
35	VM-CG-8.3.7.00324	Lock washer "Schnorr" - 10.5 x 16 x 1.5	6
36	VM-CG-8.6.7.00161	Plug - hex head - 1/2" GAS	1
251	VM-CG-8.3.2.00409	Washer - 25 x 44 x 4	1
252	VM-CG-8.2.6.00477	Nut (self-locking) - M22 x 1.5 mm	1



comer industries

For Questions or Technical Assistance Contact:

MG Equipment Co.

PO Box 655
Vineburg, CA 95487
Tel: (707) 996-2605
Mobile: (510) 813-2046
mgequipment@gmail.com